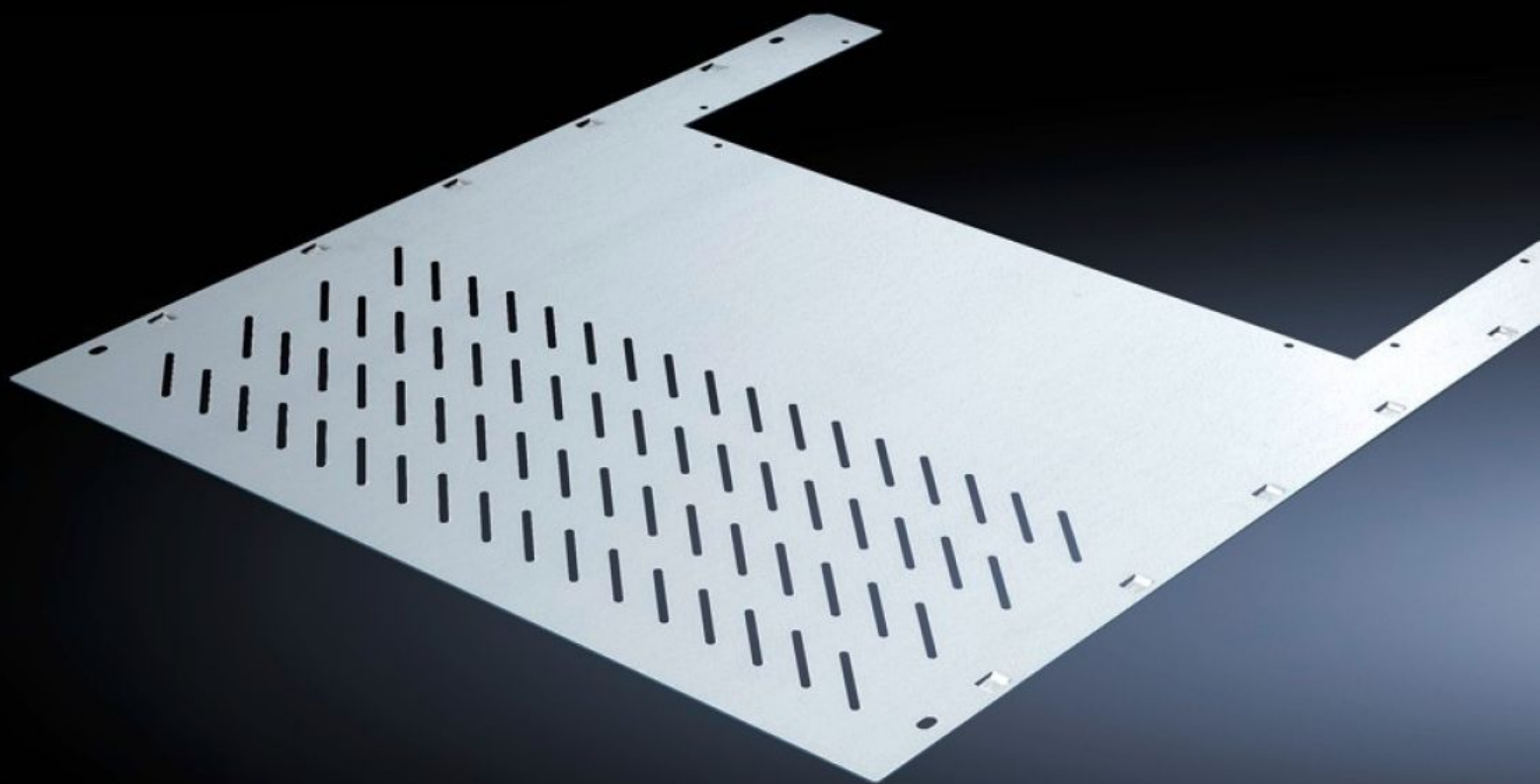


Rittal – The System.

Faster – better – everywhere.



SV 9673.436 Compartment divider

State: 2/08/2025 (Source: [rittal.com/ie-en](https://www.rittal.com/ie-en))

ENCLOSURES

POWER DISTRIBUTION

CLIMATE CONTROL

IT INFRASTRUCTURE

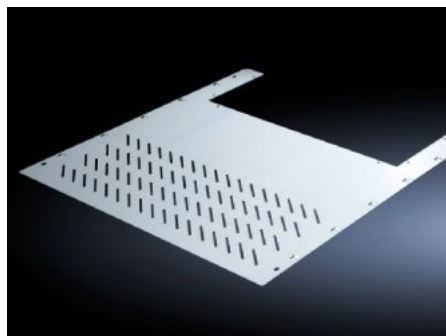
SOFTWARE & SERVICES

FRIEDHELM LOH GROUP



SV 9673.436 - Compartment divider with duct for vertical busbar systems

For the horizontal separation of compartments with vertical busbars.



Features

Model No.	SV 9673.436
Design	With louvres
Product description	For the horizontal separation of compartments with vertical busbars. In combination with the side panel modules, this creates Form separation in accordance with Form 3 or 4.
Material	Sheet steel, 1.25 mm
Surface finish	Zinc-plated
Mounting cut-out	Width:212 mm Depth:201 mm
For compartment depth	600 mm
Assembly instruction	2 mounting brackets are required to install each compartment divider.
Dimensions	Width: 306 mm Depth: 588 mm
To fit	Width: = 400 mm
Packs of	4 pc(s).
Net weight	5.2
Customs tariff number	73269098

Features

EAN	4028177570887
ETIM 9	EC002525
ECLASS 8.0	27400613