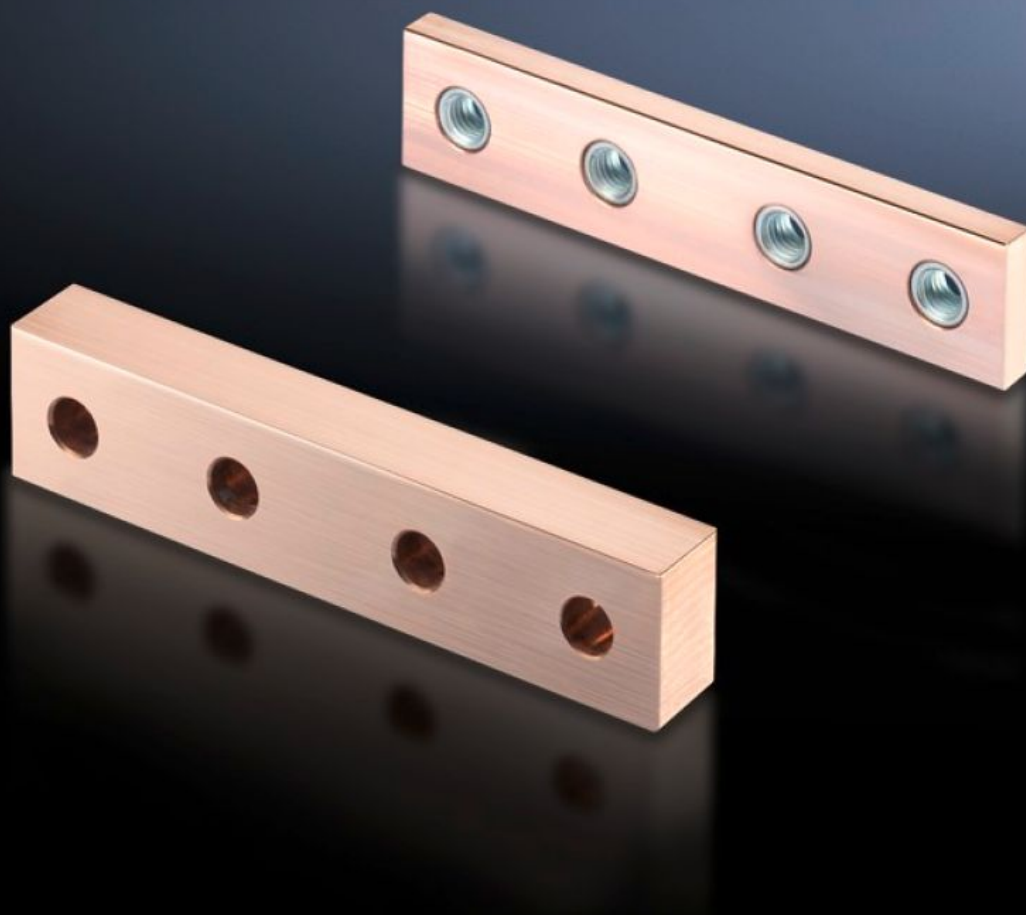
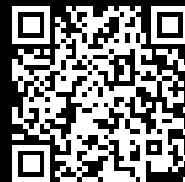


Rittal – The System.

Faster – better – everywhere.



SV 9676.621

Longitudinal connectors

State: 8/12/2025 (Source: rittal.com/ie-en)

ENCLOSURES

POWER DISTRIBUTION

CLIMATE CONTROL

IT INFRASTRUCTURE

SOFTWARE & SERVICES

FRIEDHELM LOH GROUP



SV 9676.621 - Longitudinal connectors

For connecting Flat-PLS busbar systems, no drilling required.

Features

Model No.	SV 9676.621
Applications	For connecting Flat-PLS busbar systems, no drilling required.
Material	E-Cu
Bars per conductor	2
To fit busbar system	Flat-PLS 60 Flat-PLS 100
Packs of	1 pc(s).
Net weight	1.1
Gross weight	1.12
Copper weight (kg per piece)	1.12
Customs tariff number	74198090
EAN	4028177625587
ETIM 9	EC001900
ECLASS 8.0	27400613

Approvals

Approvals	ABS DNV-GL Lloyds Register of Shipping
Explanations	Declaration of conformity Declaration of conformity UK