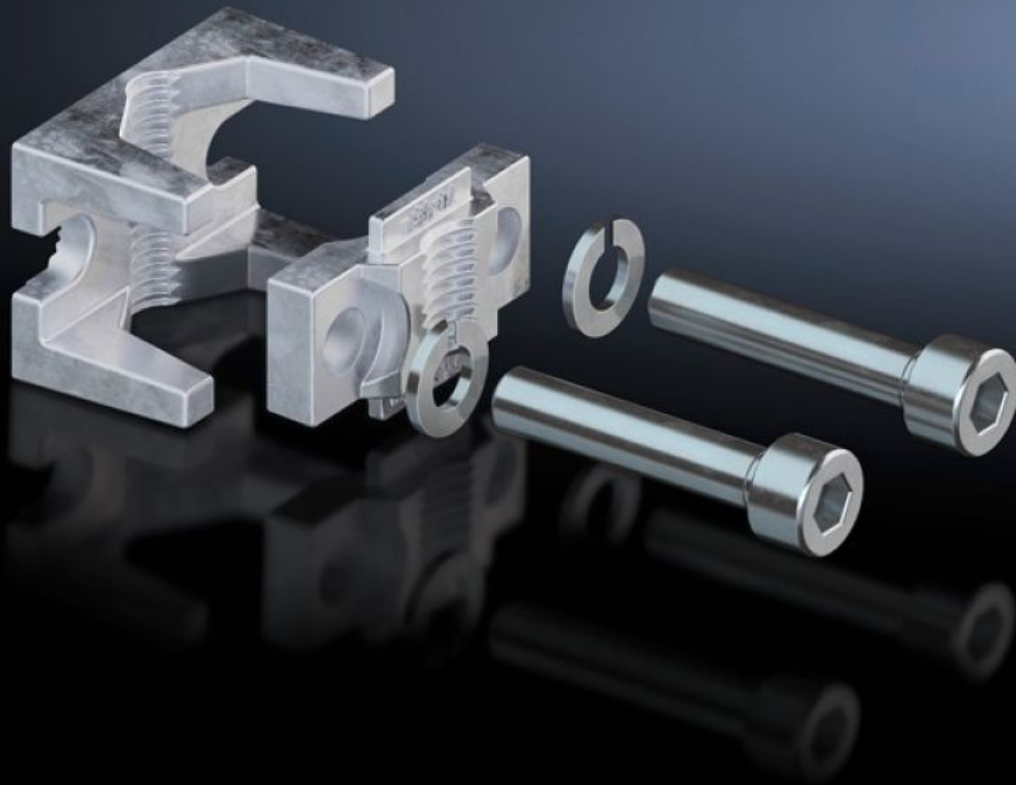


**Rittal – The System.**

Faster – better – everywhere.



# SV 9677.420 Prism terminal

State: 10/06/2026 (Source: [rittal.com/ie-en](http://rittal.com/ie-en))

ENCLOSURES

POWER DISTRIBUTION

CLIMATE CONTROL

IT INFRASTRUCTURE

SOFTWARE & SERVICES

FRIEDHELM LOH GROUP



# SV 9677.420 - Prism terminal for NH slimline fuse-switch disconnectors

For the direct connection of round conductors.

## Features

Model No.	SV 9677.420
Product description	For the direct connection of round conductors.
Material	Brass
Surface finish	Tin-plated
For size	00
To fit Model No.	9677.000 9677.010 9677.015
Connection of round conductors	10 - 95 mm <sup>2</sup>
Packs of	3 pc(s).
Net weight	0.099 kg
Gross weight	0.13 kg
Customs tariff number	39269097
ETIM 9	EC000001
ECLASS 8.0	27141146
Product description	SV Prism terminal, for NH slimline fuse-switch disconnector, size 00 (SV 9677XXX), round conductor connection 10-95 mm <sup>2</sup>