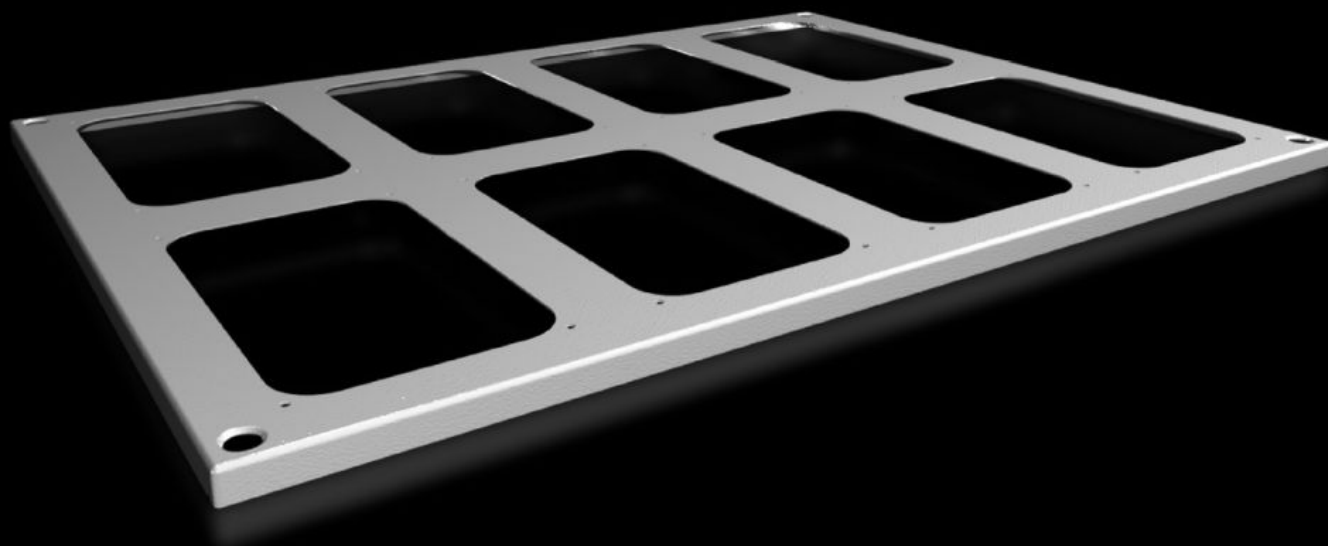
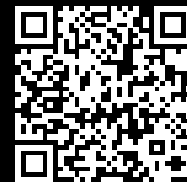


Rittal – The System.

Faster – better – everywhere.



SV 9681.586

Roof plate for cable entry glands

State: 23/07/2025 (Source: [rittal.com/ie-en](https://www.rittal.com/ie-en))

ENCLOSURES

POWER DISTRIBUTION

CLIMATE CONTROL

IT INFRASTRUCTURE

SOFTWARE & SERVICES

FRIEDHELM LOH GROUP



SV 9681.586 - Roof plate for cable entry glands for VX, VX IT

For enclosures without roof plate and in exchange for the standard roof in other enclosures.

Features

Model No.	SV 9681.586
Product description	For enclosures without roof plate and in exchange for the standard roof.
Material	Sheet steel, 1.5 mm
Surface finish	Textured paint
Colour	RAL 7035
Supply includes	Assembly parts
Number of required cable entry glands	8
To fit	Width: = 800 mm Depth: = 600 mm
Packs of	1 pc(s).
Net weight	3.46
Gross weight	4.38
PCF per pack (cradle-to-gate)	16.7 kg CO2 eq (Cat B)
Note on PCF category	Category B: PCF value (cradle-to-gate) based on the product weight, approximately calculated and self-declared
Customs tariff number	73269098
EAN	4028177926592
ETIM 9	EC000744
ECLASS 8.0	27182405

Approvals

Explanations

Declaration of conformity

Declaration of conformity UK