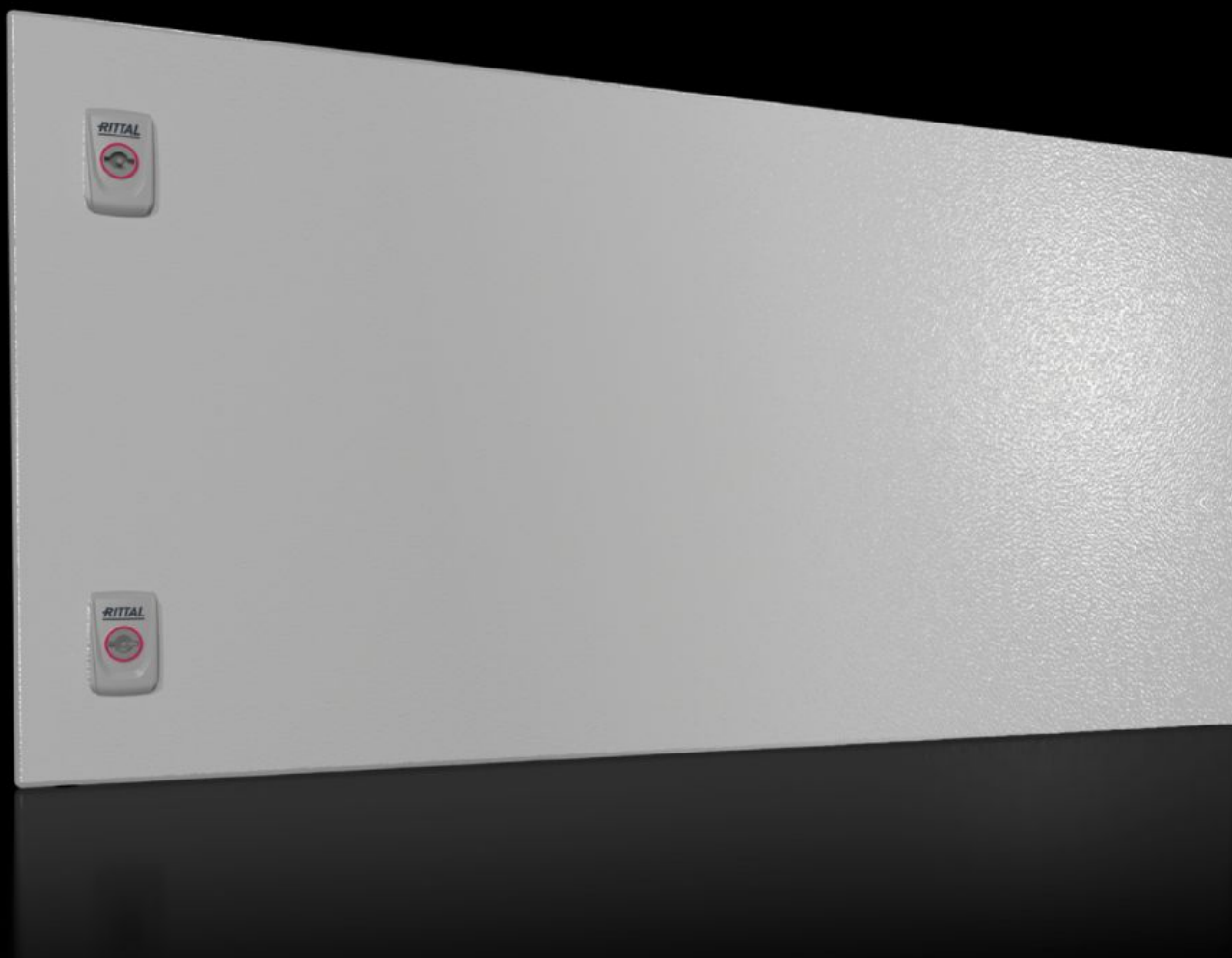
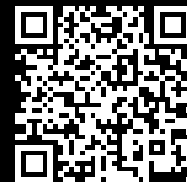


# Rittal – The System.

Faster – better – everywhere.



## SV 9682.184 Partial door

State: 2/09/2025 (Source: [rittal.com/ie-en](http://rittal.com/ie-en))

ENCLOSURES

POWER DISTRIBUTION

CLIMATE CONTROL

IT INFRASTRUCTURE

SOFTWARE & SERVICES

FRIEDHELM LOH GROUP



# SV 9682.184 - Partial door for VX

Door may be optionally hinged on the right or left.

## Features

Model No.	SV 9682.184
Product description	Suitable for VX enclosures instead of a door or rear panel. The partial doors may be combined with one another as required. A trim panel is required at the top and bottom in each case. Door may be optionally hinged on the right or left. In the case of doors without viewing panel (height 600 – 1000 mm), monitor frame 2305.000 may be installed. Standard double-bit lock insert may be exchanged for lock inserts, type A.
Material	Sheet steel, 2 mm
Surface finish	Textured paint
Colour	RAL 7035
Supply includes	Partial door Cross member Hinges Lock components Assembly parts
Note	Opening angle of partial doors max. 130°
Lock	Number of locks: 2
Dimensions	Width: 800 mm Height: 400 mm
To fit	Width: = 800 mm
IP protection category to IEC 60529	IP 54
Packs of	1 pc(s).
Net weight	6.8
Gross weight	7.56
PCF per pack (cradle-to-gate)	27.9 kg CO2 eq (Cat B)

# Features

Note on PCF category	Category B: PCF value (cradle-to-gate) based on the product weight, approximately calculated and self-declared
Customs tariff number	94039910
EAN	4028177929036
ETIM 9	EC000747
ECLASS 8.0	27182204

# Approvals

Approvals	DNV-GL Lloyds Register of Shipping UL + C-UL (listed) UL + C-UL - FTTA
Explanations	Declaration of conformity Declaration of conformity UK