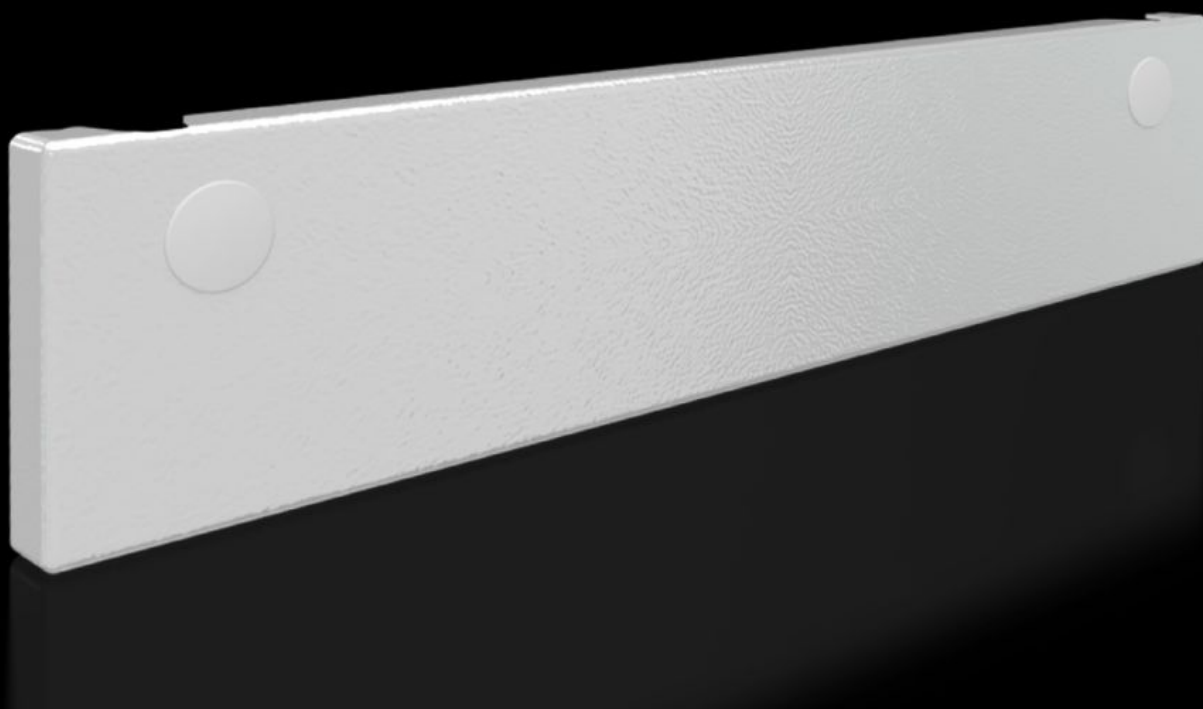
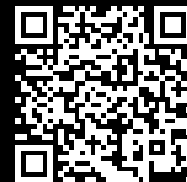


# Rittal – The System.

Faster – better – everywhere.



## SV 9682.334

## Front trim panel, bottom, solid

State: 28/08/2025 (Source: [rittal.com/ie-en](http://rittal.com/ie-en))

ENCLOSURES

POWER DISTRIBUTION

CLIMATE CONTROL

IT INFRASTRUCTURE

SOFTWARE & SERVICES

FRIEDHELM LOH GROUP



# SV 9682.334 - Front trim panel, bottom, solid for VX

To finish off at the bottom when using partial doors.

## Features

Model No.	SV 9682.334
Design	Solid
Product description	To finish off the modular front design at the bottom when using partial doors. The front trim panels may be removed from the outside by unscrewing.
Material	Sheet steel, 1.5 mm
Surface finish	Textured paint
Colour	RAL 7035
Supply includes	Front trim panel Cross member Assembly parts
Dimensions	Height: 100 mm
To fit	Width: = 400 mm
Packs of	1 pc(s).
Net weight	1.3
Gross weight	1.362
PCF per pack (cradle-to-gate)	5.2 kg CO2 eq (Cat B)
Note on PCF category	Category B: PCF value (cradle-to-gate) based on the product weight, approximately calculated and self-declared
Customs tariff number	83024200
EAN	4028177929791
ETIM 9	EC000456
ECLASS 8.0	27142423

# Approvals

---

## Approvals

DNV-GL  
Lloyds Register of Shipping  
UL + C-UL (listed)  
UL + C-UL - FTTA

---

## Explanations

Declaration of conformity  
Declaration of conformity UK