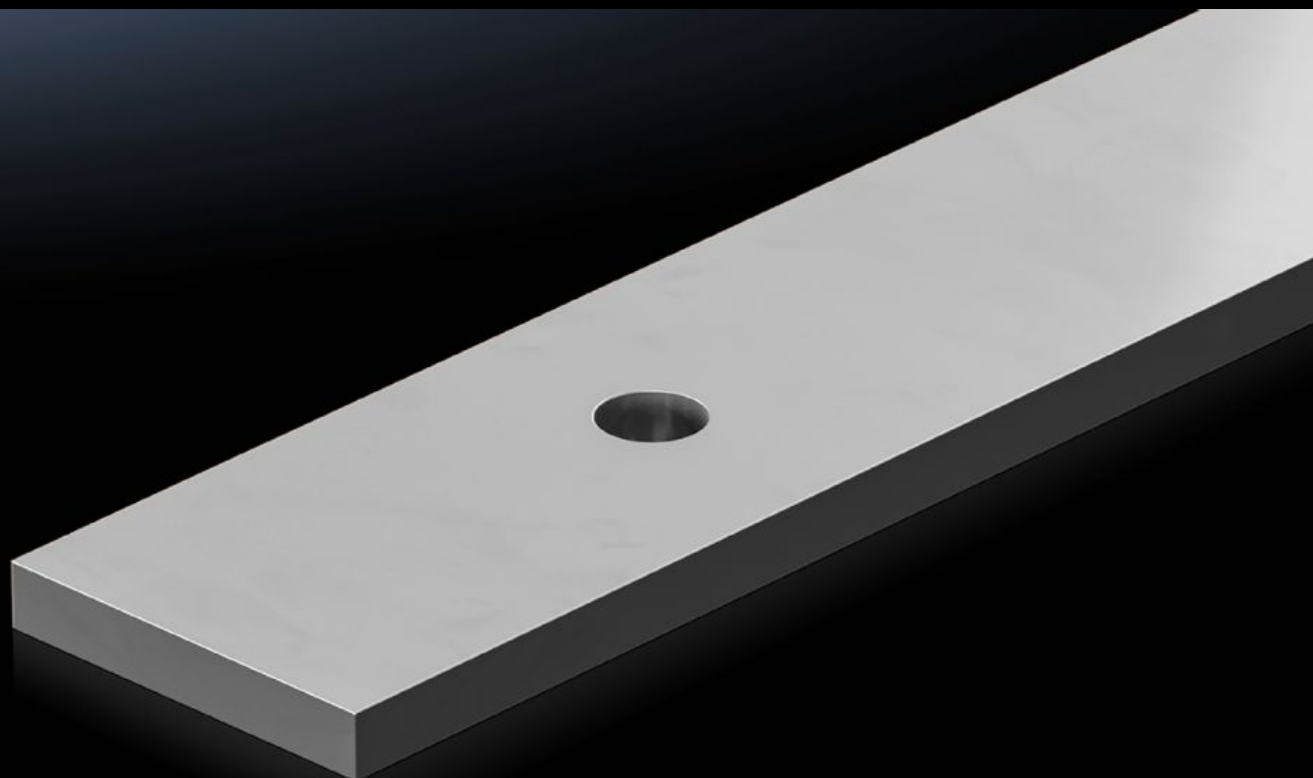


Rittal – The System.

Faster – better – everywhere.



SV 9685.006

Busbar E-Cu, slotted, tin-plated

State: 22/05/2026 (Source: rittal.com/ie-en)

ENCLOSURES

POWER DISTRIBUTION

CLIMATE CONTROL

IT INFRASTRUCTURE

SOFTWARE & SERVICES

FRIEDHELM LOH GROUP



SV 9685.006 - Busbar E-Cu, slotted, tin-plated

Features

Model No.	SV 9685.006
Product description	Busbar with integral punchings.
Material	E-Cu, tin-plated
Cross-section	50 mm x 10 mm
Hole diameter	11.5 mm
Dimensions	Width: 50 mm Height: 10 mm Length: 585 mm
Packs of	1 pc(s).
Net weight	2.5 kg
Gross weight	2.608 kg
Copper weight (kg per piece)	2.6
Customs tariff number	74071000
Product description	SV Busbar E-Cu, tin-plated, with integral punchings, WxH: 50x10 mm, L: 585 mm

Approvals

Approvals	UL + C-UL (listed)
-----------	--------------------