

Rittal – The System.

Faster – better – everywhere.



HD 1683.600

Switch housing HD

State: 20/7/2025 (Source: rittal.com/in-en)

ENCLOSURES

POWER DISTRIBUTION

CLIMATE CONTROL

IT INFRASTRUCTURE

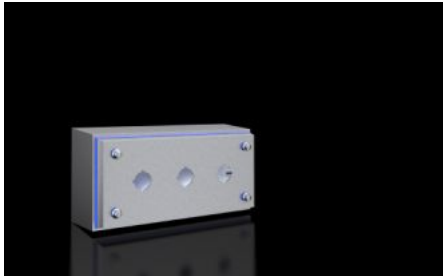
SOFTWARE & SERVICES

FRIEDHELM LOH GROUP



HD 1683.600 - Switch housing HD

Enclosure solution with three cut-outs for switches, tailored to the requirements of the food and beverage industry. All-round gap-free silicone seal between enclosure and cover. Hygiene-compliant quick-release hexagon fastener.



Features

| | |
|--------------------------------|--|
| Model No. | HD 1683.600 |
| Design | Hygienic Design enclosure |
| Material | Enclosure and cover: Stainless steel 1.4301 (AISI 304) 1.5 mm Screw plug: Stainless steel Seal: Silicone, compliant with FDA Guideline 21 CFR 177.2600 |
| Surface finish | Enclosure and cover: Brushed, grain 400, peak-to-valley height < 0.8 µm Seal: Blue, dyed (RAL 5010) |
| Supply includes | Enclosure of all-round solid construction Cover with switch cut-out Seal and screw plug (supplied loose) |
| Dimensions | Width front: 100 mm Width (rear): 122 mm Height, front: 220 mm Height rear: 242 mm Depth: 90 mm |
| Pitch pattern | 60 mm |
| Cut-outs (quantity x diameter) | 3 x 22.5 mm |

Features

| | |
|-------------------------------------|--|
| IK Code | IK08 |
| Basic material | Stainless steel 1.4301 (AISI 304) |
| Lock | Lock version: Hygiene-compliant quick-release hexagon fastener Number of locks: 4 |
| IP protection category to IEC 60529 | IP 66 IP X9 |
| Protection category NEMA | NEMA 1 NEMA 3 NEMA 3X NEMA 4 NEMA 4X NEMA 12 NEMA 13 |
| Type rating to UL 50E | Type 1 Type 3 Type 3X Type 4 Type 4X Type 12 Type 13 |
| Packs of | 1 pc(s). |
| Net weight | 1.42 |
| Gross weight | 1.62 |
| Customs tariff number | 94039910 |
| EAN | 4028177958685 |
| ETIM 9 | EC002713 |
| ETIM 8 | EC002713 |
| ECLASS 8.0 | 27180101 |

Approvals

Approvals

| | |
|--------------|---|
| Approvals | UL + C-UL (listed) |
| Explanations | Declaration of conformity Declaration of conformity UK |

Tender text

HD Switch housing

Enclosure consisting of body and cover.

Body folded and welded in one piece,
with all-round, removable blue silicone seal
compliant to FDA-guideline 21 CFR 177.2600
body tilted by 3° for optimum cleaning,
in accordance with EHEDG guidelines.

Cover on top, tilted by 3°
with three cut-outs each 22.5 mm for three switches
four hygienic hexagonal screw plugs with
all-round sealing ring between enclosure and cover,
protective conductor connection in cover and body

Material:

Body and cover: stainless steel 1.4301 (AISI 304) 1,5 mm

Screw plug: stainless steel

Seal: silicone, compliant with FDA guideline 21 CFR 177.2600

Surface finish:

Body and cover: brushed, grain 400,

peak-to-valley height: < 0,8 µm

Seal: blue, dyed (RAL 5010)

Protection class IP according to IEC 60 529: IP 66, IPX9

Type rating according to UL 50E: Type 13, 3R, 4X

Model No.: 1683600

Dimensions (W x H x D): 100 x 220 x 90 mm