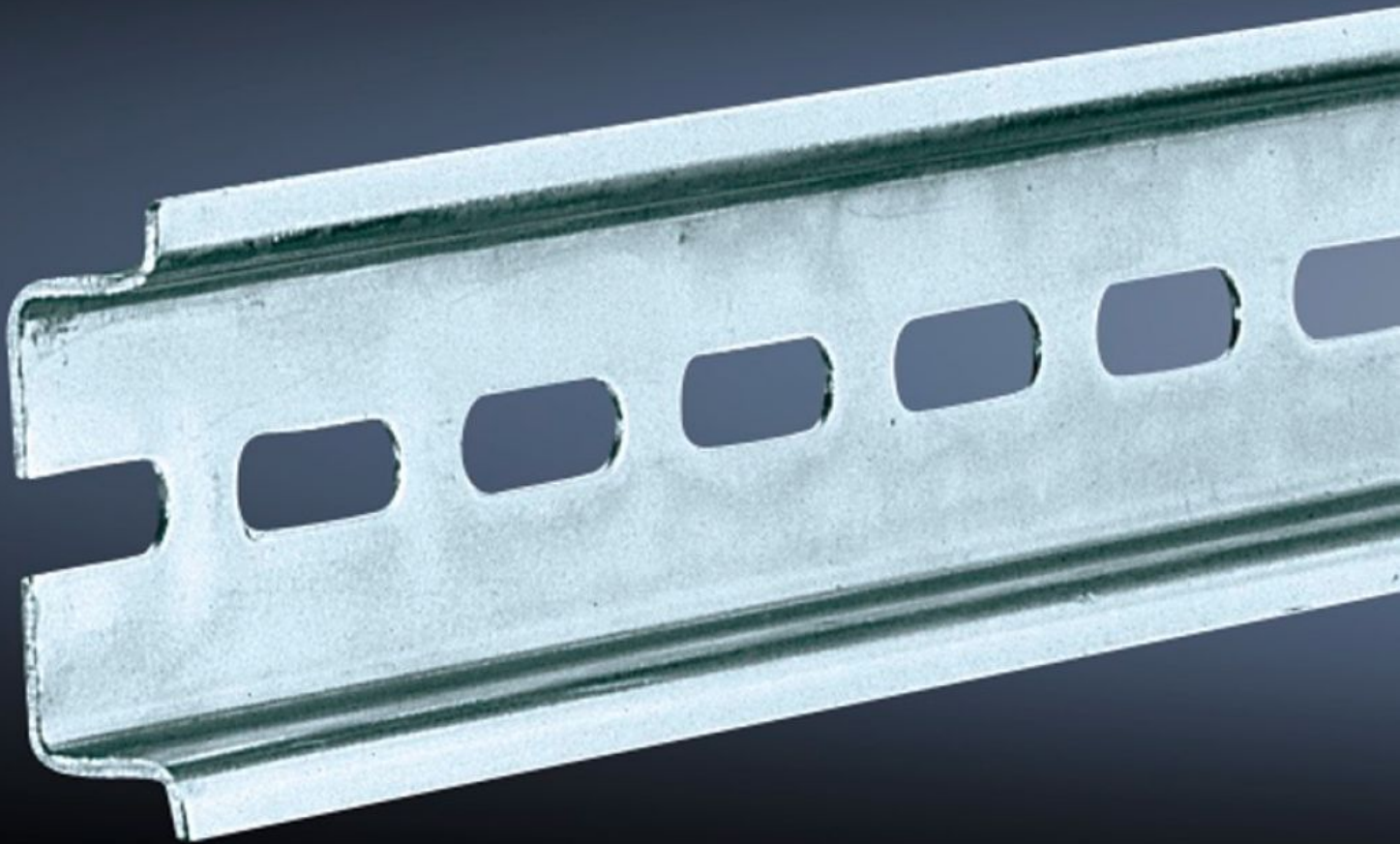


**Rittal – The System.**

Faster – better – everywhere.



**SZ 2317.000**

**Support rail TH 35/7.5**

State: 7/7/2025 (Source: [rittal.com/in-en](http://rittal.com/in-en))

ENCLOSURES

POWER DISTRIBUTION

CLIMATE CONTROL

IT INFRASTRUCTURE

SOFTWARE & SERVICES

FRIEDHELM LOH GROUP



# SZ 2317.000 - Support rail TH 35/7.5 to EN 60 715

Length sized to the enclosure width.

## Features

|                               |  |
|-------------------------------|--|
| Model No.                     | SZ 2317.000  |
| Design                        | TH 35/7.5  |
| Product description           | Length sized to the enclosure width.   |
| Material                      | Sheet steel  |
| Surface finish                | Zinc-plated  |
| Length support rail           | 387 mm   |
| To fit                        | Enclosure type: AX<br>KX<br>AE<br>KL<br>KL-HD<br>Width: = 400 mm   |
| Packs of                      | 10 pc(s).  |
| Net weight                    | 1.08   |
| Gross weight                  | 1.251  |
| PCF per pack (cradle-to-gate) | 4.8 kg CO2 eq (Cat B)  |
| Note on PCF category          | Category B: PCF value (cradle-to-gate) based on the product weight, approximately calculated and self-declared |
| Customs tariff number         | 73269098   |
| EAN                           | 4028177021068  |
| ETIM 9                        | EC001285   |
| ETIM 8                        | EC001285   |
| ECLASS 8.0                    | 27189234   |