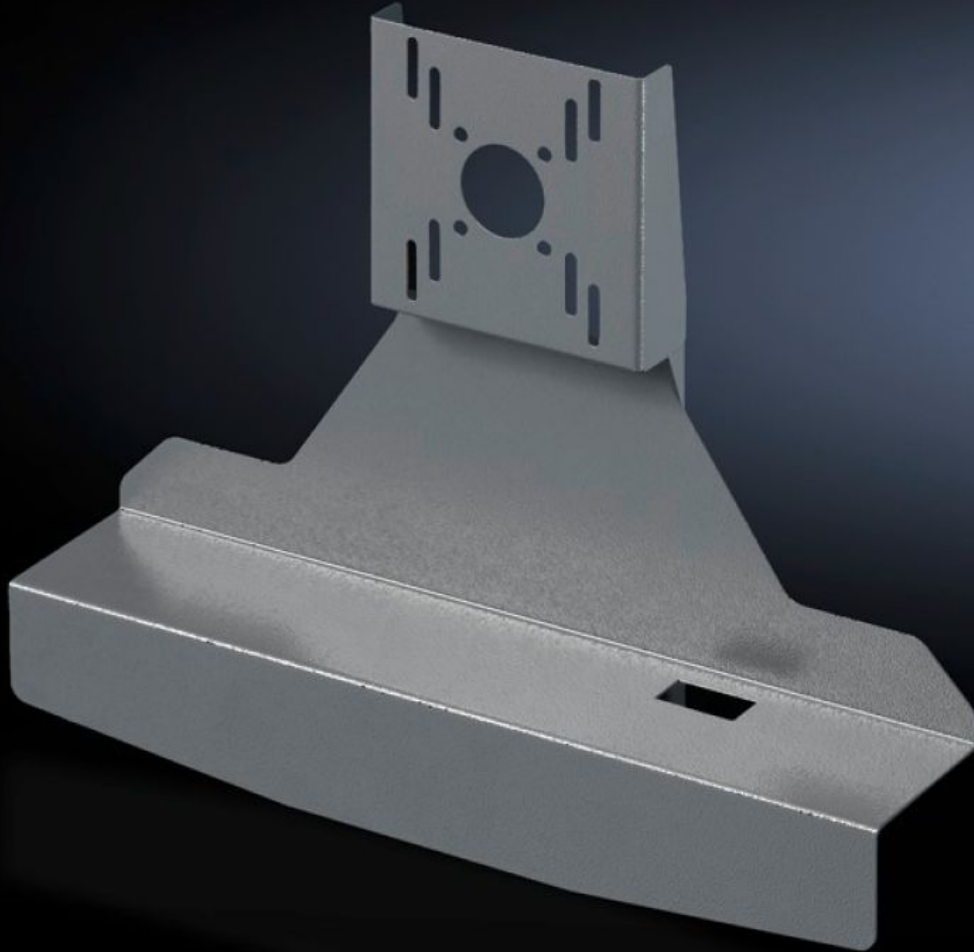


# Rittal – The System.

Faster – better – everywhere.



## SM 2383.030 TFT holder

State: 23/5/2026 (Source: [rittal.com/in-en](http://rittal.com/in-en))

ENCLOSURES

POWER DISTRIBUTION

CLIMATE CONTROL

IT INFRASTRUCTURE

SOFTWARE & SERVICES

FRIEDHELM LOH GROUP



# SM 2383.030 - TFT holder

Suitable for mounting TFTs to enclosure attachments CP-S, CP-L and vertical support arm via vertically hinged enclosure attachment.



## Features

Model No.	SM 2383.030
Product description	Suitable for mounting TFTs with VESA 75/100. Adaptation up to 21" on attachment CP 40 (6501.070), attachment CP 60 for support arm connection 120 x 65 mm (6206.360), or vertical support arm via tilting adaptor +100°/-60° (6206.460).
Material	Sheet steel
Surface finish	Spray-finished
Colour	RAL 7024
Dimensions	Width: 477 mm Height: 372 mm Depth: 110.5 mm
Packs of	1 pc(s).
Net weight	3.033 kg
Gross weight	3.233 kg
PCF per pack (cradle-to-gate)	12.2 kg CO2 eq (Cat B)

# Features

---

Note on PCF category	Category B: PCF value (cradle-to-gate) based on the product weight, approximately calculated and self-declared
Customs tariff number	83024900
ETIM 9	EC002620
ETIM 8	EC002620
ECLASS 8.0	27189261
Product description	SM TFT holder, for TFTs up to 21", WHD: 477x372x110.5 mm

---