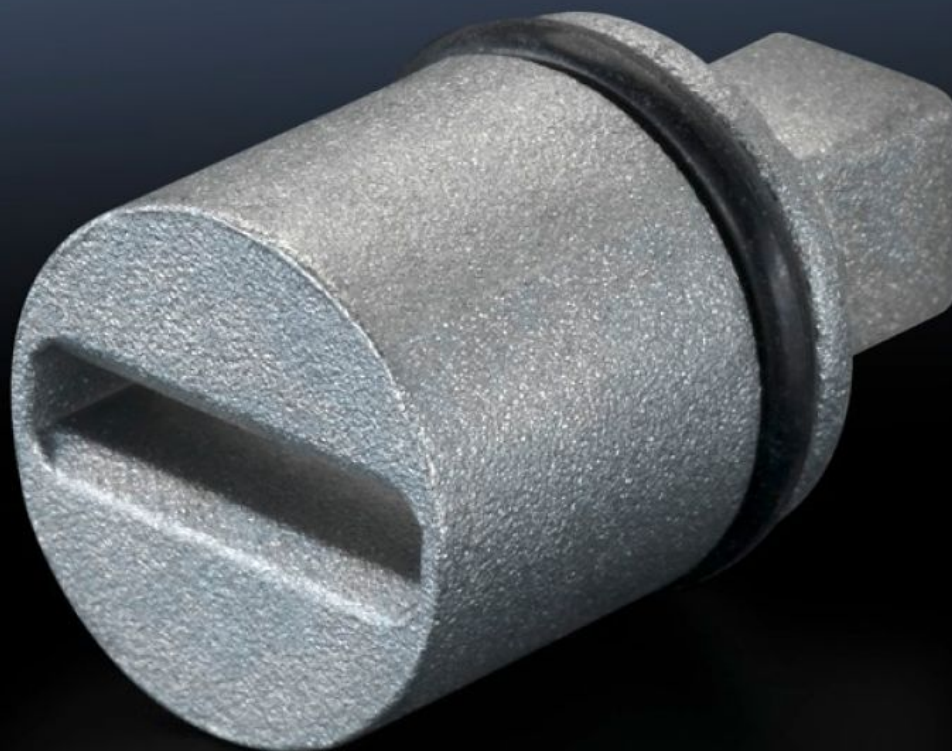
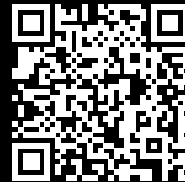


Rittal – The System.

Faster – better – everywhere.



SZ 2464.000

Lock insert

State: 4/8/2025 (Source: [rittal.com/in-en](https://www.rittal.com/in-en))

ENCLOSURES

POWER DISTRIBUTION

CLIMATE CONTROL

IT INFRASTRUCTURE

SOFTWARE & SERVICES

FRIEDHELM LOH GROUP



SZ 2464.000 - Lock insert

Alternative lock inserts such as triangular, square, screwdriver, Daimler, Fiat, double-bit.

Features

Model No.	SZ 2464.000
Design	A
Material	Die-cast zinc
Length	27 mm
Installation in handle system	Comfort handle AX Mini-comfort handle AX Ergoform-S handle Standard Ergoform-S handle Standard for KS plastic enclosures
Lock	Lock insert: Screwdrivers
To fit enclosure type	KX E-Box AX AX IT Operating housings AX AX plastic EB BG AE TE TP desk section and console TP pedestals One-piece console TP - Console cover One-piece console TP - Console door TP universal console CX one-piece console Console CX CX desk unit CX pedestal
Packs of	1 pc(s).
Net weight	0.019

Features

Gross weight	0.021
Customs tariff number	83015000
EAN	4028177023840
ETIM 9	EC000743
ETIM 8	EC000743
ECLASS 8.0	27409218