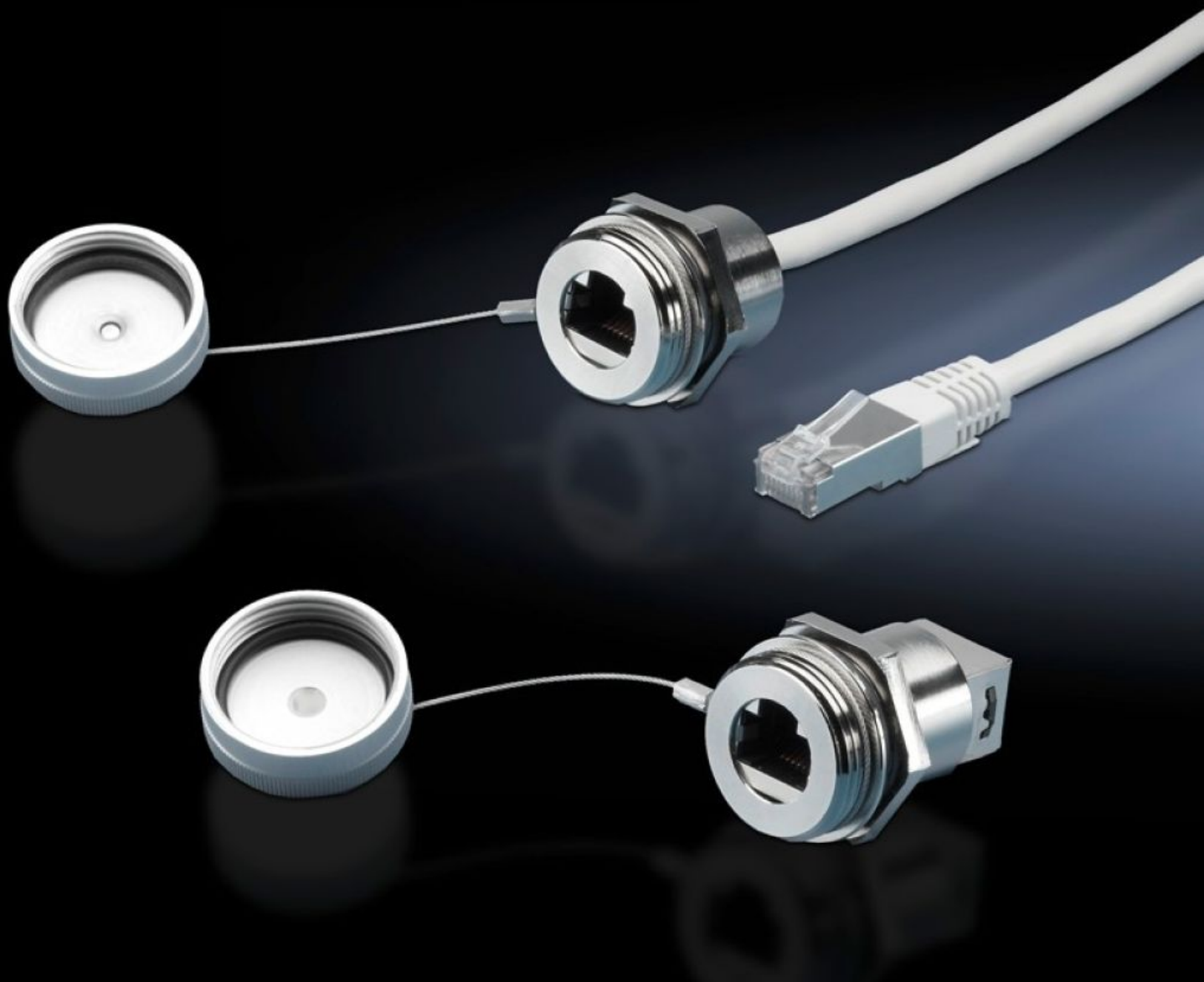


Rittal – The System.

Faster – better – everywhere.



SZ 2482.700

Interface extension with wall connection

State: 3/8/2025 (Source: rittal.com/in-en)

ENCLOSURES

POWER DISTRIBUTION

CLIMATE CONTROL

IT INFRASTRUCTURE

SOFTWARE & SERVICES

FRIEDHELM LOH GROUP



SZ 2482.700 - Interface extension with wall connection

For extending the internal enclosure interfaces – e.g. from industrial PCs and switches – up to the outside of the enclosure.

Features

Model No.	SZ 2482.700
Design	RJ45 wall-mounted jack on internal connector
Product description	For extending the internal enclosure interfaces – e.g. from industrial PCs and switches – up to the outside of the enclosure. The wall connection only needs the same space as a switch.
Benefits	Rapid access for maintenance work The protection category of the enclosure is preserved The lock nut cuts automatically into the spray-finish, thereby creating a conductive connection Captive protective cap
Material	Enclosure: Brass Cover: Aluminium Seal: Polyamide
Surface finish	Enclosure: Nickel-plated Cover: Natural anodised
Length	0.5 m
Dimensions	Length: 0.5 m
For wall thickness (max.)	1 - 6 mm
IP protection category to IEC 60529	IP67 with sealed protective cap
Packs of	1 pc(s).
Net weight	0.07
Gross weight	0.077
Customs tariff number	85444290
EAN	4028177550216

Features

ETIM 9	EC001408
ETIM 8	EC001408
ECLASS 8.0	19059205