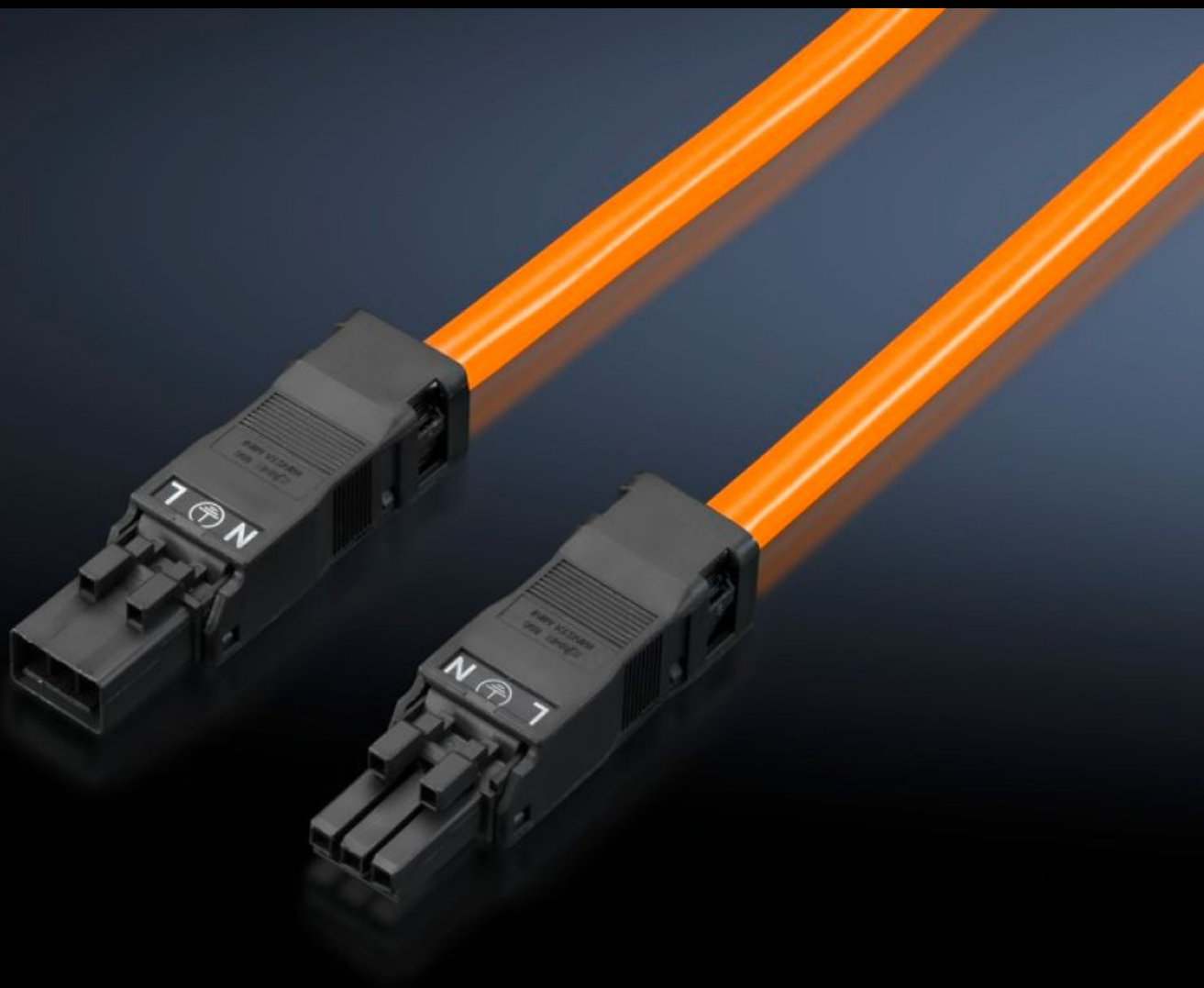
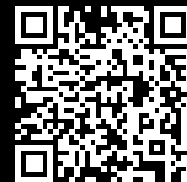


# Rittal – The System.

Faster – better – everywhere.



## SZ 2500.430 Connection cable

State: 17/8/2025 (Source: [rittal.com/in-en](http://rittal.com/in-en))

ENCLOSURES

POWER DISTRIBUTION

CLIMATE CONTROL

IT INFRASTRUCTURE

SOFTWARE & SERVICES

FRIEDHELM LOH GROUP



# SZ 2500.430 - Connection cable

For simple, time-saving connection of the LED system light.

## Features

Model No.	SZ 2500.430
Design	Through-wiring, 3-pole (with socket and connector)
Product description	For time-saving and simple installation of the LED system light.
Colour	Orange
Cross-section	1.5 mm <sup>2</sup>
Length	1,000 mm
Dimensions	Length: 1,000 mm
Rated operating voltage	100 V - 240 V, 1~, 50 Hz/60 Hz
Packs of	5 pc(s).
Net weight	0.66
Gross weight	0.664
Customs tariff number	85444290
EAN	4028177809123
ETIM 9	EC001576
ETIM 8	EC001576
ECLASS 8.0	27060402

## Approvals

Explanations	Declaration of conformity Declaration of conformity UK
--------------	---