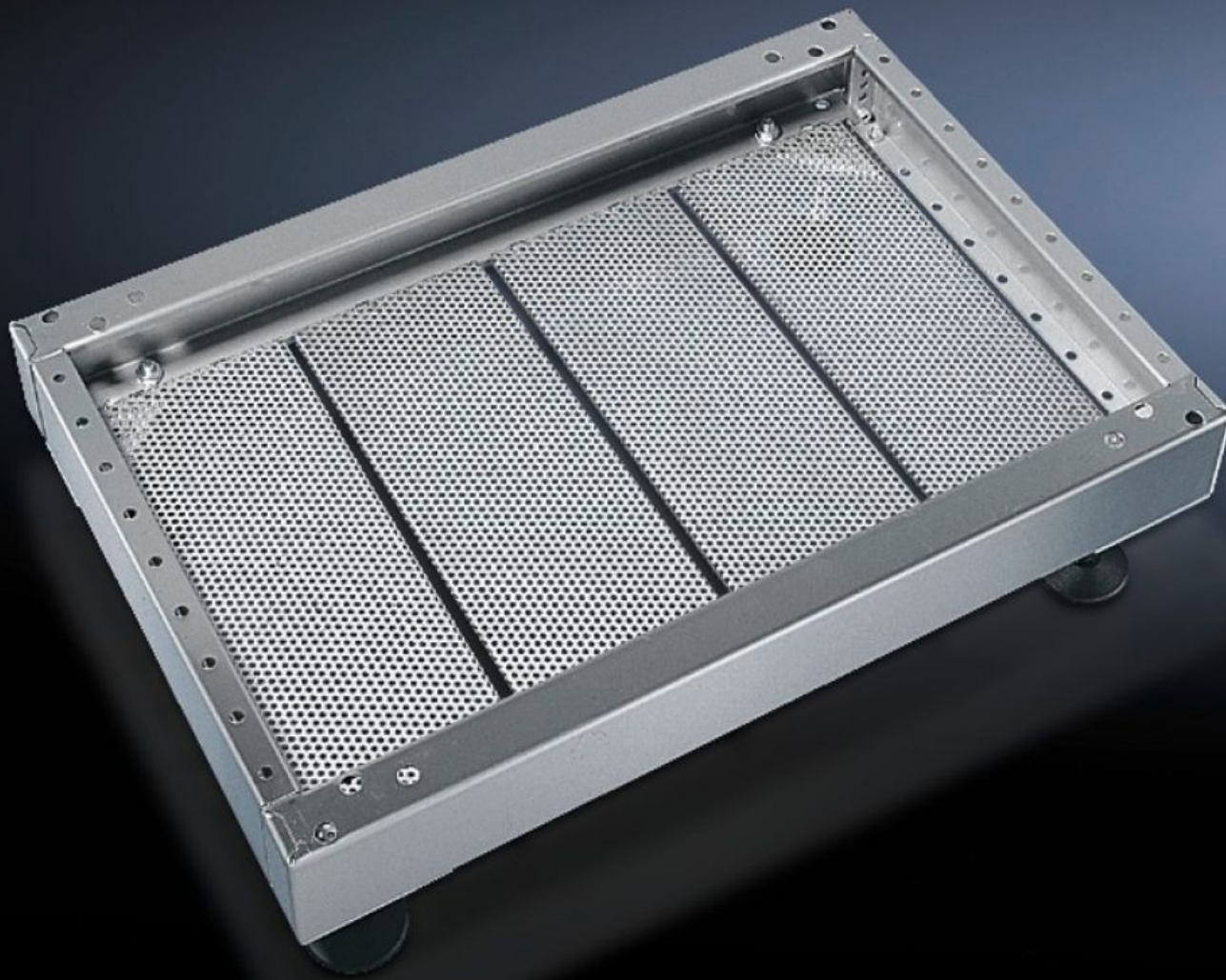


Rittal – The System.

Faster – better – everywhere.



PS 2913.000

Base/plinth trim, modular

State: 19/8/2025 (Source: rittal.com/in-en)

ENCLOSURES

POWER DISTRIBUTION

CLIMATE CONTROL

IT INFRASTRUCTURE

SOFTWARE & SERVICES

FRIEDHELM LOH GROUP



PS 2913.000 - Base/plinth trim, modular for base/plinth TS, stainless steel and base/plinth, complete, stainless steel

For secure cable routing in the base/plinth between the floor and the enclosure.

Features

Model No.	PS 2913.000
Product description	For secure cable routing in the base/plinth between the floor and the enclosure.
Material	Stainless steel 1.4301 (AISI 304)
Supply includes	4 base/plinth trim panels
Note	One base/plinth trim panel is needed per 200 mm base/plinth width.
Dimensions	Width: 175 mm
To fit	Depth: = 600 mm
Packs of	4 pc(s).
Net weight	3.928
Gross weight	4.129
Customs tariff number	73269098
EAN	4028177034419
ETIM 9	EC002620
ETIM 8	EC002620
ECLASS 8.0	27189261