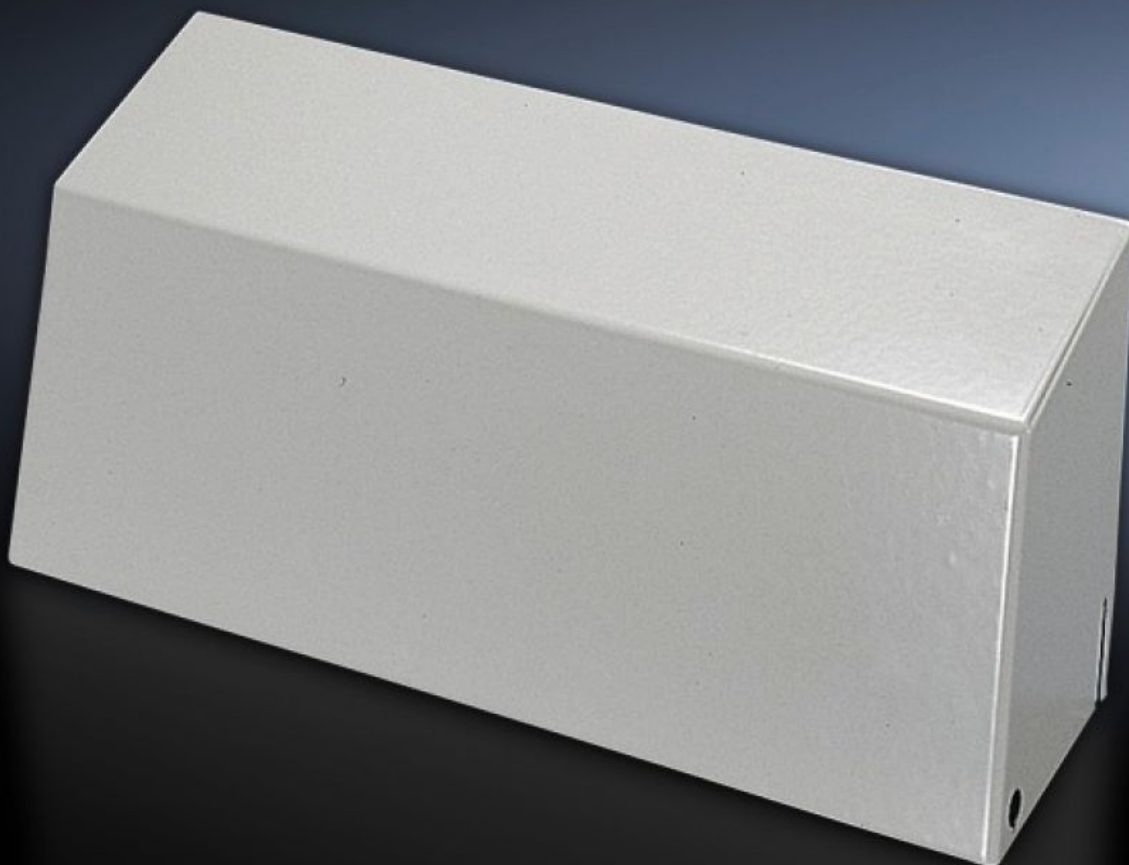


# Rittal – The System.

Faster – better – everywhere.



## SK 3213.330

## Air diverter

State: 10/9/2025 (Source: [rittal.com/in-en](http://rittal.com/in-en))

ENCLOSURES

POWER DISTRIBUTION

CLIMATE CONTROL

IT INFRASTRUCTURE

SOFTWARE & SERVICES

FRIEDHELM LOH GROUP



# SK 3213.330 - Air diverter

Targeted routing of the cold air flow to avoid hot spots in the enclosure. Particularly well-suited for densely-packed electrical components in the enclosure.

## Features

|                       |   |
|-----------------------|---|
| Model No.             | SK 3213.330   |
| Product description   | For use with wall-mounted cooling units, for targeted routing of cold air in a downward direction. Particularly well-suited for densely-packed electrical components in the lower section of the enclosure. |
| Benefits              | Cold air is routed downwards  |
| Material              | Sheet steel   |
| Colour                | RAL 7035  |
| To fit                | TopTherm wall-mounted cooling unit Blue e   |
| To fit Model No.      | 3332.xxx  |
| Packs of              | 1 pc(s).  |
| Net weight            | 2   |
| Gross weight          | 2.334   |
| Customs tariff number | 73269098  |
| EAN                   | 4028177380745   |
| ETIM 9                | EC011217  |
| ETIM 8                | EC011217  |
| ECLASS 8.0            | 22410601  |