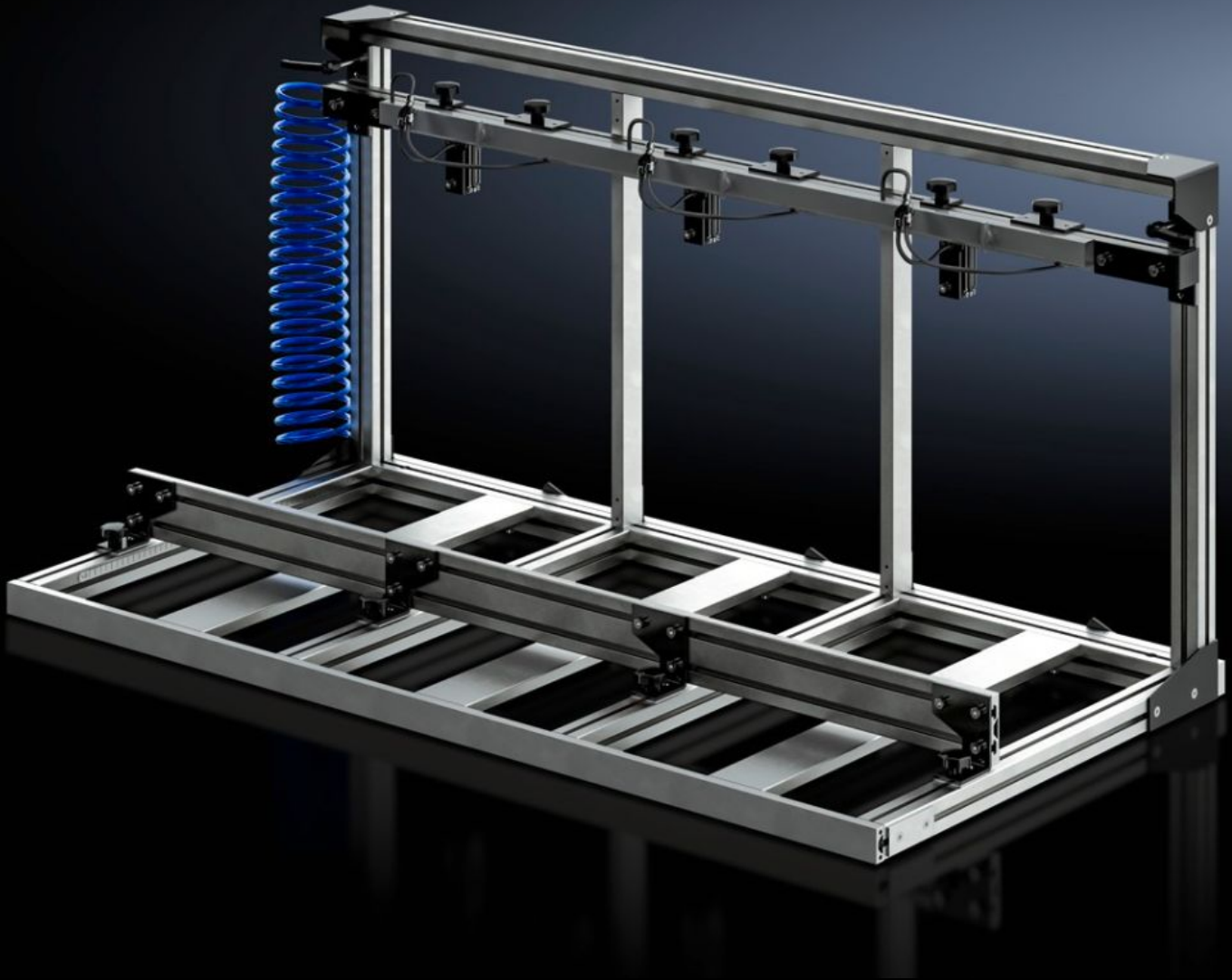


Rittal – The System.

Faster – better – everywhere.



AS 4050.061 Clamping frame

State: 31/5/2026 (Source: rittal.com/in-en)

ENCLOSURES

POWER DISTRIBUTION

CLIMATE CONTROL

IT INFRASTRUCTURE

SOFTWARE & SERVICES

FRIEDHELM LOH GROUP



AS 4050.061 - Clamping frame

Parallel machining of enclosures in the cube machining zone of Perforex machining centres BC and Perforex milling terminals MT for shorter setup times and enhanced productivity.

Features

| | |
|---|---|
| Model No. | AS 4050.061 |
| Design | Pneumatic clamping device |
| Product description | Enables parallel cube machining of enclosures on Perforex machining centres BC and Perforex milling terminals MT. |
| Possible number of terminal Boxes for parallel processing | 4 |
| Note | Use of the clamping frame (Model No. 4050.080) in the machining centre BC (Model No. 4050.230) is only possible with the two-door variant. |
| To fit Model No. | 4050.107 4050.108 4050.230 4055.920 4055.921 4055.925 4055.926 |
| Suitable for | Perforex BC 1007 HS Perforex BC 1008 HS Perforex BC 2014 HS Perforex MT 2101 Perforex MT 2101 S Perforex MT 2201 Perforex MT 2201 S |
| Dimensions of clampable enclosures max. | Width: 200 mm Height: 300 mm Depth: 300 mm |
| Dimensions of clampable enclosures min. | Width: 90 mm Height: 70 mm Depth: 70 mm |

Features

| | |
|-----------------------|---|
| Packs of | 1 pc(s). |
| Net weight | 25 kg |
| Gross weight | 25 kg |
| Customs tariff number | 84669360 |
| ETIM 9 | EC003010 |
| ETIM 8 | EC003010 |
| ECLASS 8.0 | 36609190 |
| Product description | AS Multiple fastening, BC 1007/1008/2014, Clamping frame for several small enclosures, - 4 clamping positions in the frame, - Pneumatic clamping device, - Min. enclosure dimensions (W x H x D): 90 x 70 x 70 mm |