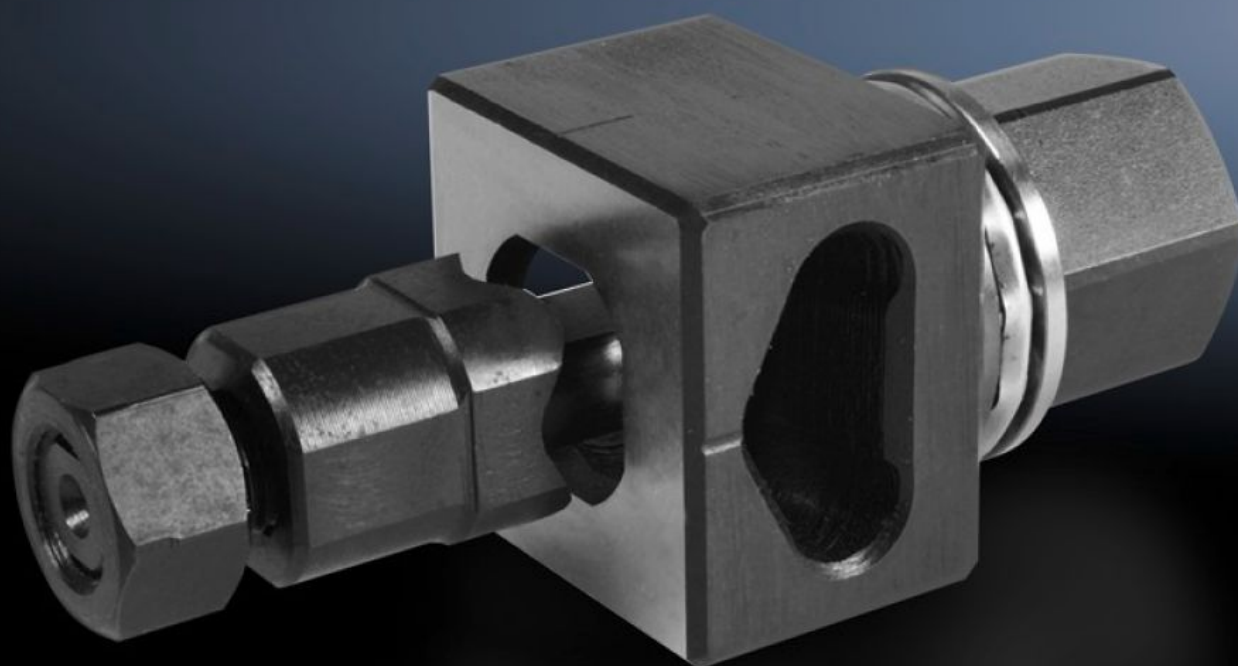


Rittal – The System.

Faster – better – everywhere.



AS 4055.441

Hole punch, special contour

State: 20/7/2025 (Source: rittal.com/in-en)

ENCLOSURES

POWER DISTRIBUTION

CLIMATE CONTROL

IT INFRASTRUCTURE

SOFTWARE & SERVICES

FRIEDHELM LOH GROUP



AS 4055.441 - Hole punch, special contour for sheet steel

For punching cut-outs with a special contour

Features

Model No.	AS 4055.441
Design	Flattened to 20.1 mm on 4 sides
Product description	For punching cut-outs with a special contour. The hole punch is operated with a wrench or hydraulic punch.
Benefits	With side ejector for the waste No jamming of the die
Supply includes	Female dies Male dies Tension bolts Lock nut Pressure nut with ball bearing Adaptor for hydraulics Plastic case
Machinable material	Sheet steel
Maximum machinable material thickness, sheet steel	2 mm
Ø punch	22.5 mm
Packs of	1 pc(s).
Net weight	0.723
Gross weight	0.753
Customs tariff number	82073010
EAN	4028177808508
ETIM 9	EC000156
ETIM 8	EC000156
ECLASS 8.0	21049047