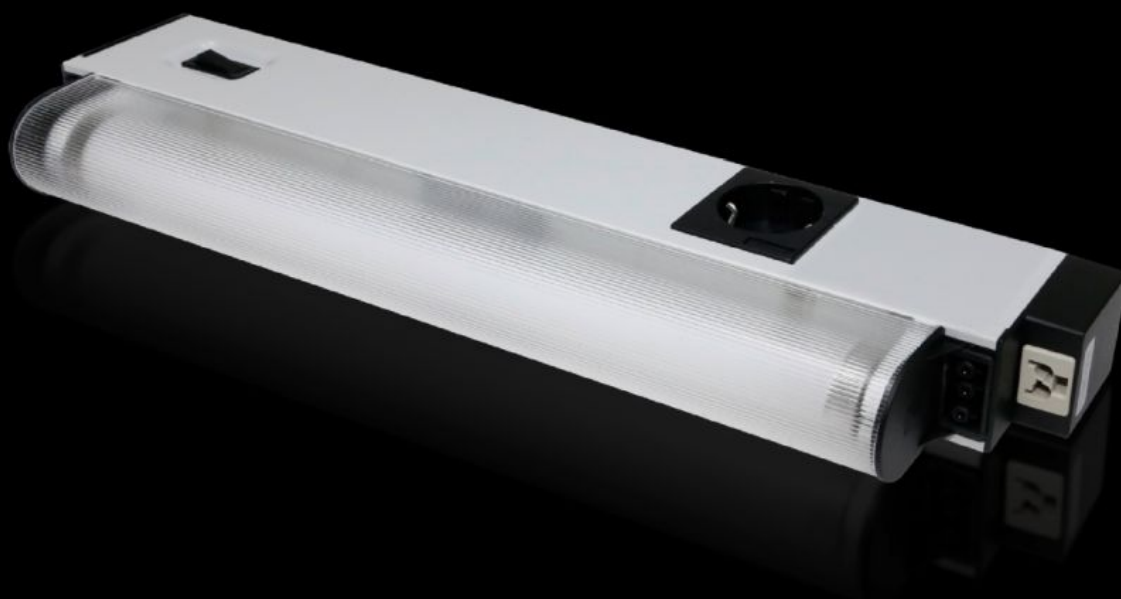
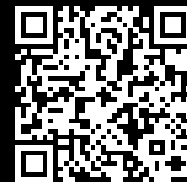


# Rittal – The System.

Faster – better – everywhere.



## SZ 4139.140 Courtesy light

State: 29/7/2025 (Source: [rittal.com/in-en](http://rittal.com/in-en))

ENCLOSURES

POWER DISTRIBUTION

CLIMATE CONTROL

IT INFRASTRUCTURE

SOFTWARE & SERVICES

FRIEDHELM LOH GROUP



# SZ 4139.140 - Courtesy light

Supply voltage: 100 - 240 V AC 50/60 Hz

## Features

Model No.	SZ 4139.140
Design	without door operated switch
Supply includes	Courtesy light Light Light cover Assembly parts
Power consumption	14 W
Ballast	Wide-range electronic ballast
Connection options	Power supply via connectors Door-operated switch Through-wiring (creating rows of lights)
Light	Fluorescent lamp, base G13
Protection class	I (PE conductor)
Switch (type)	Integral on/off/door-operated switch
Light cover	Yes
Light – installation type	Screw-fastening
Rated impulse withstand voltage, phase to earth	1000 V AC
Rated impulse withstand voltage, phase to phase	500 V AC
Rated insulation voltage	500 V DC/1s

# Features

Installation options	TS horizontal section of the roof frame: direct TS, SE vertical section: with TS adaptor bracket SE sections at the front and rear of the roof frame: with TS adaptor bracket SE extrusions at the side of the roof frame: direct AE, CM, TP: with universal bracket AE: with rail for interior installation
Dimensions	Width: 452 mm Height: 117 mm Depth: 50 mm
Operating temperature range	-15 °C...45 °C
Sockets	D, earthing-pin (type F, CEE 7/4)
Storage temperature range	-20 °C...70 °C
Rated operating voltage	100 V - 240 V, 1~, 50 Hz/60 Hz
Socket version	D, earthing-pin (type F, CEE 7/4)
Packs of	1 pc(s).
Net weight	1.2
Gross weight	1.243
Customs tariff number	94054990
EAN	4028177092327
ECLASS 8.0	27189241

# Approvals

Explanations	Declaration of conformity Declaration of conformity UK
--------------	-----------------------------------------------------------