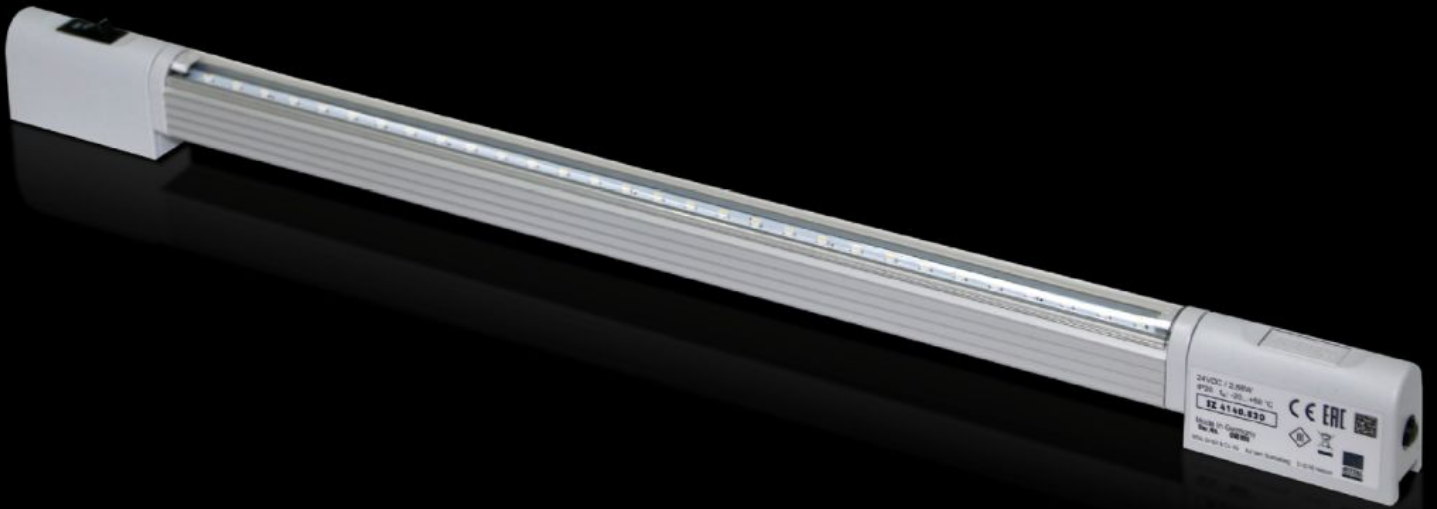


Rittal – The System.

Faster – better – everywhere.



SZ 4140.830

LED compact system light

State: 28/6/2026 (Source: rittal.com/in-en)

ENCLOSURES

POWER DISTRIBUTION

CLIMATE CONTROL

IT INFRASTRUCTURE

SOFTWARE & SERVICES

FRIEDHELM LOH GROUP



SZ 4140.830 - LED compact system light

Supply voltage: 24 V DC



Features

Model No.	SZ 4140.830
Benefits	Max. EMC capacity. Safe, thanks to operation in the extra-low safety voltage range. Economical energy use. Low-maintenance thanks to the use of LEDs. May be connected to a door-operated switch.
Function principle	Integral through-wiring. Universal attachment options. Vertically hinged light cone
Material	Light body: Extruded aluminium Light cover: Polycarbonate (halogen-free) Light ends: PC-ABS
Colour	Similar to RAL 7035
Supply includes	LED compact system light Light Light cover Assembly parts
Mounting distance screws	450 mm

Features

Connection options	Power supply via connectors Door-operated switch Through-wiring (creating rows of lights)
Light	LEDs, cold white
Protection class	III (SELV)
Switch (type)	Integral on/off/door-operated switch
Light cover	Yes
Light – installation type	Screw-fastening Clip attachment Magnetic attachment (accessory)
Rated impulse withstand voltage, phase to earth	Depending on the power pack
Rated impulse withstand voltage, phase to phase	Depending on the power pack
Rated insulation voltage	Depending on the power pack
Rated current max DC note	When configuring rows of lights, the maximum rated current is 2 amperes
With DC	0.12 A
Number of LEDs	30
Mounting distance clip/magnet	375 mm
Installation options	Directly onto the enclosure section with 25 mm pitch pattern Via mounting kit magnet AE: with rail for interior installation
Note	Only intended for use in enclosures and sealed cases When using on customer-supplied power packs, it is important to obtain the requisite approvals depending on the application When configuring rows of lights, the maximum rated current is 2 amperes
Light cone adjustment	Yes
Dimensions	Width: 430 mm Height: 32.8 mm Depth: 20.64 mm

Features

Rated operating voltage	24 V (DC)
IP protection category to IEC 60529	IP 20
Packs of	1 pc(s).
Net weight	0.37 kg
Gross weight	0.38 kg
Customs tariff number	94054990
ETIM 9	EC000321
ETIM 8	EC000321
ECLASS 8.0	27189241
Product description	SZ System light LED compact, WHD: 430x33x21 mm, 24 V DC, Integral on/off/door-operated switch mode

Approvals

Explanations	Declaration of conformity Declaration of conformity UK
--------------	---