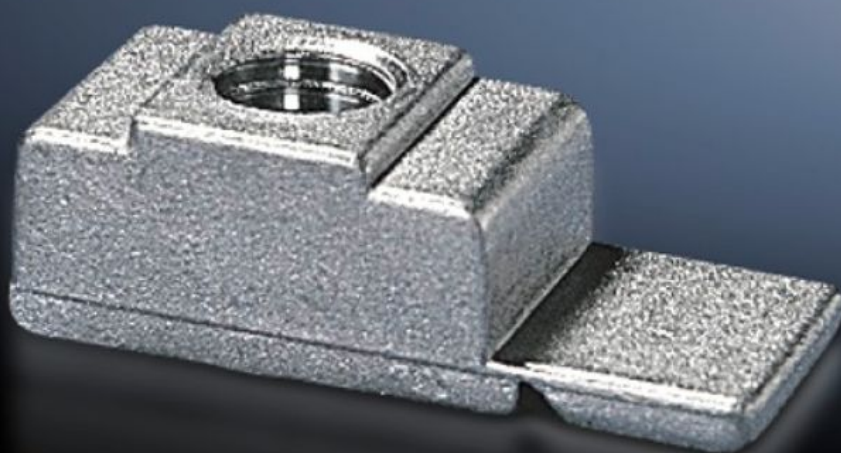
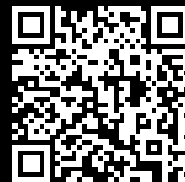


Rittal – The System.

Faster – better – everywhere.



TS 4162.000 Threaded blocks

State: 19/6/2025 (Source: rittal.com/in-en)

ENCLOSURES

POWER DISTRIBUTION

CLIMATE CONTROL

IT INFRASTRUCTURE

SOFTWARE & SERVICES

FRIEDHELM LOH GROUP



TS 4162.000 - Threaded blocks

Used on enclosures and rails with rectangular system punching 12.5 x 10.5 mm with snap-off insertion aid, die-cast zinc.



Features

Model No.	TS 4162.000
Product description	With snap-off insertion aid, die-cast zinc.
Installation options	<ul style="list-style-type: none">On the horizontal and vertical VX enclosure sectionOn the vertical TS, VX SE enclosure section via adaptor rails for VX compatibilityOn the horizontal TS enclosure sectionOn the horizontal VX SE enclosure section, bottomOn the horizontal VX SE enclosure section, top in the depthOn punched rails 23 x 23 mmOn punched section without mounting flange, 23 x 73 mmOn punched section without mounting flange, 45 x 88 mmOn punched sections with mounting flanges, 23 x 64 mmOn punched sections with mounting flanges, 23 x 73 mmOn punched sections with mounting flanges, 23 x 89 mm, stainless steelOn enclosures and rails with rectangular system punching 12.5 x 10.5 mm.
Dimensions	Thread: M6
To fit enclosure type	<ul style="list-style-type: none">VXTSVX SE
Thread	M6

Features

Packs of	50 pc(s).
Net weight	0.45
Gross weight	0.5
Customs tariff number	79070000
EAN	4028177092945
ETIM 9	EC002358
ETIM 8	EC002358
ECLASS 8.0	23110815