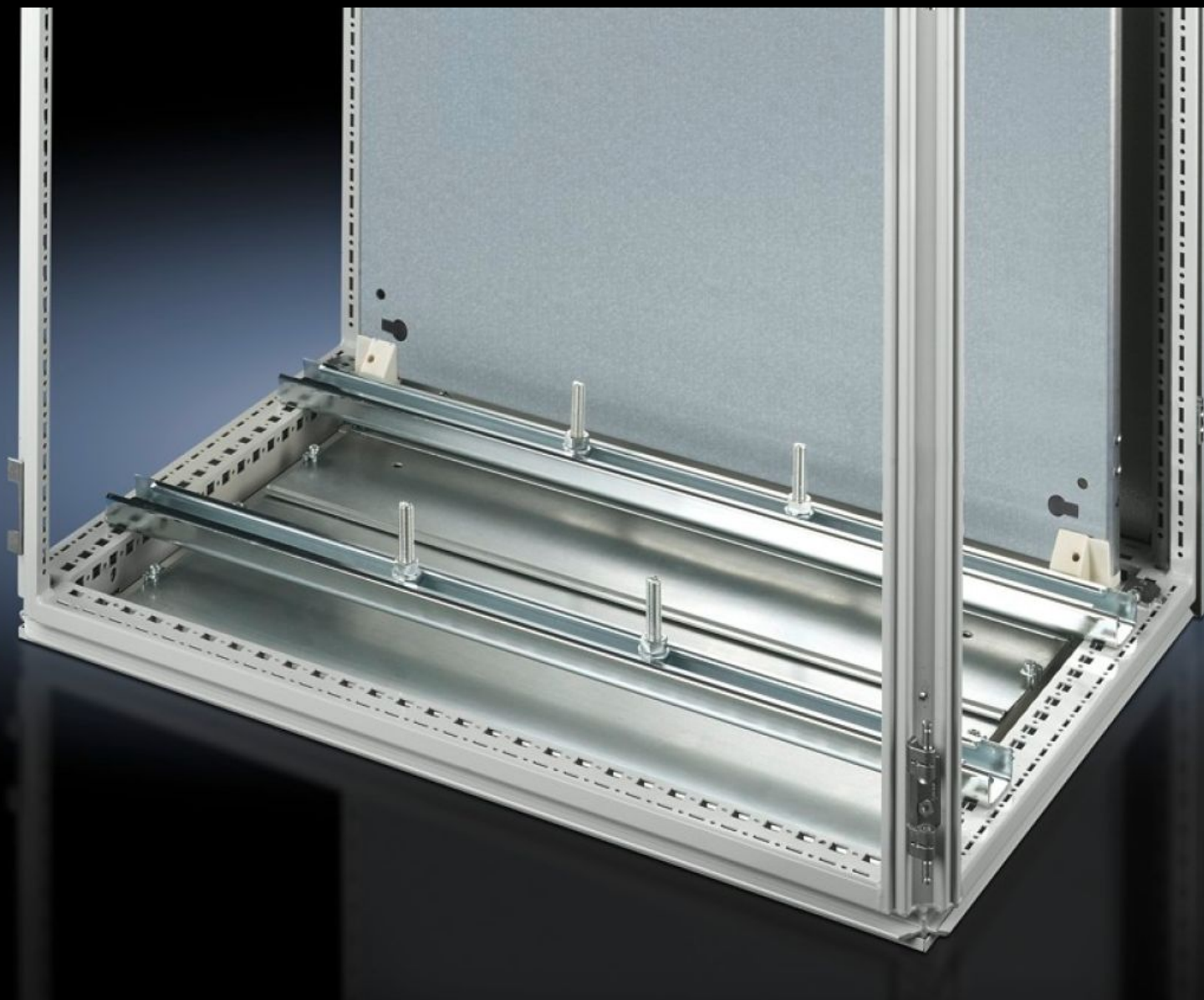


# Rittal – The System.

Faster – better – everywhere.



## SZ 4347.000

## System support rails

State: 13/7/2025 (Source: [rittal.com/in-en](https://www.rittal.com/in-en))

ENCLOSURES

POWER DISTRIBUTION

CLIMATE CONTROL

IT INFRASTRUCTURE

SOFTWARE & SERVICES

FRIEDHELM LOH GROUP



# SZ 4347.000 - System support rails

For heavy installed equipment such as transformers. T-head screw and slot in the support rail accommodate all mounting dimensions.



## Features

|                      |                                                                                                                                                                                                                                                                                                                                                                                                                                                 |
|----------------------|-------------------------------------------------------------------------------------------------------------------------------------------------------------------------------------------------------------------------------------------------------------------------------------------------------------------------------------------------------------------------------------------------------------------------------------------------|
| Model No.            | SZ 4347.000                                                                                                                                                                                                                                                                                                                                                                                                                                     |
| Product description  | For heavy installed equipment such as transformers. T-head screw and slot in the support rail accommodate all mounting dimensions.                                                                                                                                                                                                                                                                                                              |
| Material             | Sheet steel                                                                                                                                                                                                                                                                                                                                                                                                                                     |
| Surface finish       | Zinc-plated                                                                                                                                                                                                                                                                                                                                                                                                                                     |
| Supply includes      | 2 system support rails (45 x 25 mm)<br>4 T-head screws M12 x 60 mm<br>Assembly parts                                                                                                                                                                                                                                                                                                                                                            |
| Installation options | On the vertical TS enclosure section via snap-on nuts TS 8800.808 or adaptor rails for VX compatibility, height-offset, via TS punched rail 25 x 38 mm<br>On the VX SE enclosure section in the width (bottom and top) or in the depth (bottom and top) (without mounting plate) via snap-on nuts 8800.808.<br>On the horizontal TS enclosure section: in the width, in the depth (without mounting plate)<br>On base configuration rail for TP |
| To fit               | Enclosure type: TS<br>Width: = 1,000 mm                                                                                                                                                                                                                                                                                                                                                                                                         |
| Packs of             | 2 pc(s).                                                                                                                                                                                                                                                                                                                                                                                                                                        |
| Net weight           | 4.64                                                                                                                                                                                                                                                                                                                                                                                                                                            |

# Features

|                       |               |
|-----------------------|---------------|
| Gross weight          | 4.839         |
| Customs tariff number | 73269098      |
| EAN                   | 4028177099395 |
| ETIM 9                | EC000293      |
| ETIM 8                | EC001285      |
| ECLASS 8.0            | 27189261      |