

# Rittal – The System.

Faster – better – everywhere.



## PC 5366.350

## PC enclosure system

State: 12/7/2025 (Source: [rittal.com/in-en](http://rittal.com/in-en))

ENCLOSURES

POWER DISTRIBUTION

CLIMATE CONTROL

IT INFRASTRUCTURE

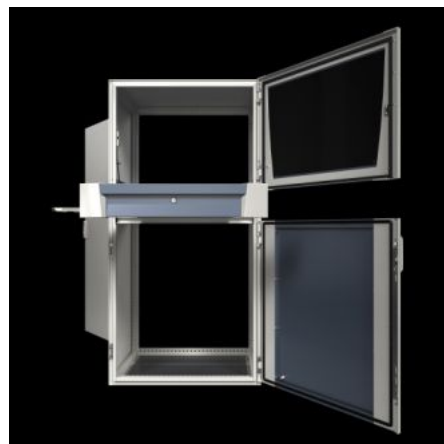
SOFTWARE & SERVICES

FRIEDHELM LOH GROUP



# PC 5366.350 - PC enclosure system

Secure accommodation of all PC components, from monitors, to PCs, to keyboards. For ultimate ease of operation in a modern design. Perfect protection from humidity and dirt, temperature fluctuations and unauthorised access.



## Features

Model No.	PC 5366.350
Design	with glazed door at the top, keyboard drawer, small mounting compartment and component shelf
Product description	Secure accommodation of all PC components, from monitors, to PCs, to keyboards. For ultimate ease of operation in a modern design. Perfect protection from humidity and dirt, temperature fluctuations and unauthorised access.
Material	Enclosure, door, rear door, mounting compartment, supports: Sheet steel Handles, decorative trim panels: Plastic Door trim panels: Aluminium Viewing window: Single-pane safety glass
Surface finish	Enclosure and door: Dipcoat primed, powder-coated on the outside, textured paint Mounting compartment, support: powder-coated
General colour	RAL 7035
Colour	Enclosure, door, decorative trim panels, supports: RAL 7035 Handle: RAL 7015 Monitor panel, door centre part: RAL 7015

# Features

Supply includes	Enclosure, door, rear door Gland plates Glazed door, top Mounting compartment, small Keyboard drawer Component shelf
Dimensions	Width: 600 mm Height: 1,600 mm Depth: 636 mm
IP protection category to IEC 60 529	IP 55
Protection category NEMA	NEMA 12
Type rating to UL 50E	Type 1 Type 12
Max. keyboard dimensions (WxHxD)	480 x 70 x 260 mm
Basic material	Sheet steel
Packs of	1 pc(s).
Net weight	97.5
Gross weight	100
PCF per pack (cradle-to-gate)	363.9 kg CO2 eq (Cat B)
Note on PCF category	Category B: PCF value (cradle-to-gate) based on the product weight, approximately calculated and self-declared
EAN	4028177959439
ETIM 9	EC002502
ECLASS 8.0	27180501

## Approvals

Approvals	UL + C-UL (listed)
-----------	--------------------

# Approvals

Certificates	Surface finish
Explanations	Declaration of conformity Declaration of conformity UK

## Tender text

PC-Enclosure with glazed door, mounting compartment, keyboard-drawer

Enclosure for stand-alone siting, consisting of solid body, glazed door at the top, mounting compartment small, Keyboard-drawer, compartment shelf, bottom door, rear door and welded base assembly. Enclosure body with profiled mounting angles at the front and rear, sidewalls and rear. System slots on a 25 mm pitch pattern, all around, for individual interior installation and two pairs of mounting angles for space-saving system installation.

Glazed door, top:

With support frame latched from the inside, right hinged vertical decorative trim panels  
pane with screen-printed mask

Mounting compartment, small:

Hinged on right-hand side,  
at left-hand side screw-fastened from the inside,  
installation plate folded, decorative side trim panels

Component shelf for monitor:

Perforated, fixed

Drawer for keyboard:

Housing with keyboard drawer plus pull-out mousepad  
front trim panel with handle strip, folded as  
handrest, with lock insert no. 3524 E  
with unlocking device for glazed door, top  
max. keyboard dimensions (WxHxD): 480x70x260 mm

Bottom door:

Vertical bars with locking rod and

double-bit insert, hinged on right-hand side

door resp. installation plate folded

Rear door:

With locking rod and double-bit insert,

hinged on right-hand side

With gland plates, divided

Material:

Enclosure, door, rear door, mounting compartment,

supports: sheet steel

Handles, decorative trim panels: Plastic

Door trim panels: Aluminium

Viewing window: Single pane safety glass

Gland plates: sheet steel, galvanized

Surface finish:

Enclosure and door: dipcoat primed, powder coated outside,

Textured paint

Mounting compartment, supports: powder coated

Colour:

Enclosure, door, decorative trim panels, supports: RAL 7035

Handles: RAL 7015

Monitor panel, door centre part: RAL 7015

Protection class:

IP to IEC 60 529: IP55

NEMA: NEMA 12

Dimensions WHD: 600 x 1600 x 636 mm

Model No.: 5366350

Manufacturer: Rittal GmbH & Co.KG