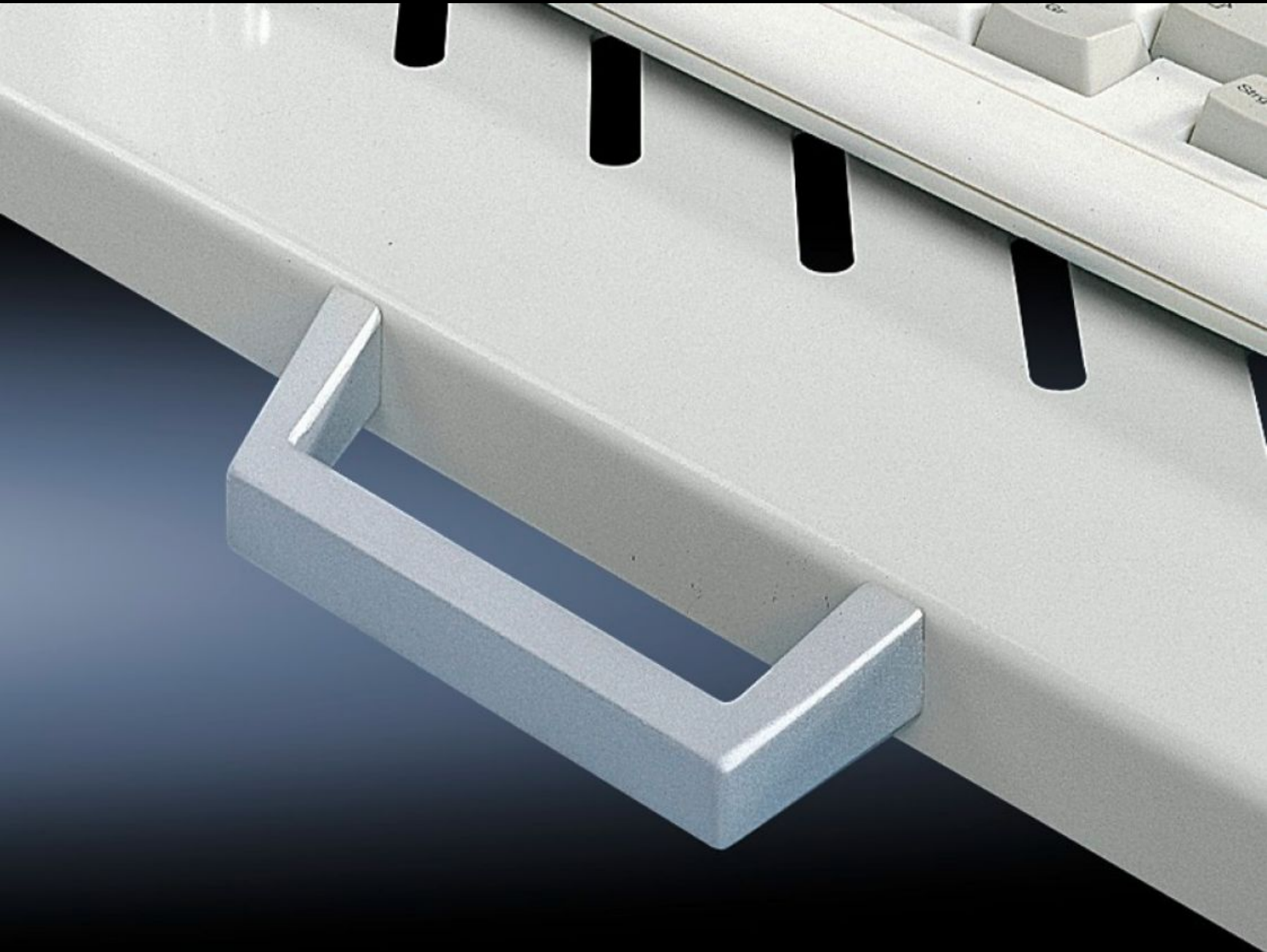


**Rittal – The System.**

Faster – better – everywhere.



# DK 5501.730 Handles

State: 28/6/2026 (Source: [rittal.com/in-en](http://rittal.com/in-en))

ENCLOSURES

POWER DISTRIBUTION

CLIMATE CONTROL

IT INFRASTRUCTURE

SOFTWARE & SERVICES

FRIEDHELM LOH GROUP



# DK 5501.730 - Handles for pull-out component shelves

Handles for ease of use with component shelves.

## Features

|                       |   |
|-----------------------|---|
| Model No.             | DK 5501.730   |
| Product description   | The component shelves are prepared for the attachment of handles.       |
| Material              | Die-cast zinc   |
| Surface finish        | Spray-finished, silver-grey   |
| Supply includes       | Assembly parts  |
| Packs of              | 2 pc(s).  |
| Net weight            | 0.176 kg  |
| Gross weight          | 0.197 kg  |
| Customs tariff number | 83024110  |
| ETIM 9                | EC002626  |
| ECLASS 8.0            | 27189266  |
| Product description   | DK Handles, For pull-out component shelves, Spray-finished, silver-grey |