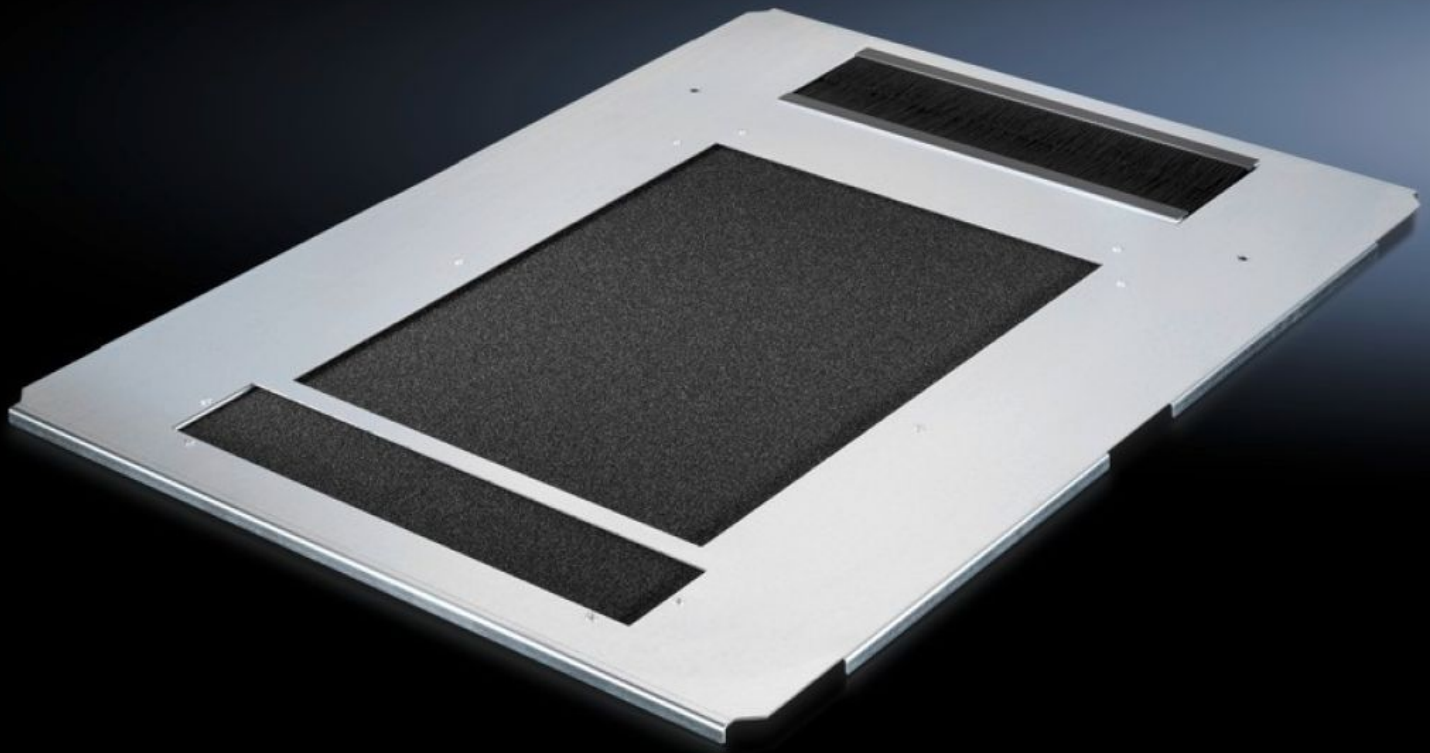


Rittal – The System.

Faster – better – everywhere.



DK 5502.350

Gland plate, one-piece, vented

State: 23/5/2026 (Source: rittal.com/in-en)

ENCLOSURES

POWER DISTRIBUTION

CLIMATE CONTROL

IT INFRASTRUCTURE

SOFTWARE & SERVICES

FRIEDHELM LOH GROUP



DK 5502.350 - Gland plate, one-piece, vented for TS IT

Potential equalisation is provided via assembly components and earthing points. The gland plate set is used to conceal the entire base opening.



Features

| | |
|---------------------|--|
| Model No. | DK 5502.350 |
| Product description | To completely cover the open base assembly in one piece. Perforated over the entire surface. This allows cold air to flow in from the base or base/plinth area. This ensures the inflow of cold air, particularly in enclosures with rack climate control. With a brush strip at the rear for user-friendly cable entry from below across the entire enclosure width. Integral guides permit simple accommodation of a filter mat, which is also readily replaced. |
| Material | Sheet steel Brush strip: Plastic, UL 94-HB Filter mat: Foamed plastic |
| Surface finish | Zinc-plated |
| Supply includes | Gland plate, one-piece, vented, with cable entry at the rear Filter mat Assembly parts |
| To fit | Enclosure type: TS IT TX CableNet Width: 800 mm Depth: 1,000 mm |
| Packs of | 1 pc(s). |
| Net weight | 5.84 kg |

Features

| | |
|-----------------------|--|
| Gross weight | 7.46 kg |
| Customs tariff number | 73269098 |
| ETIM 9 | EC002620 |
| ECLASS 8.0 | 27189261 |
| Product description | DK Gland plate, one-piece, vented, with cable entry at the rear, incl. filter mat, for TS IT, CableNet, WxD: 800x1000 mm |

Tender text

Grand plate, one-piece, vented,
For TS, TS IT, TX CableNet
With cable entry at the rear
WxD: 800 x 1000 mm
Sheet steel
Brush strip: Plastic, UL 94-HB
Filter mat: Foamed plastic