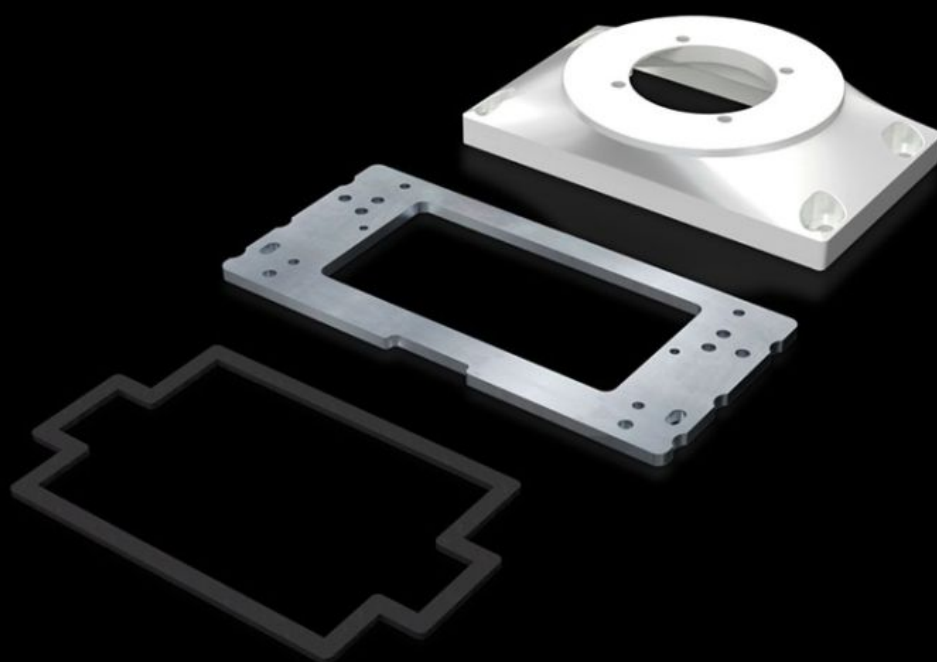


# Rittal – The System.

Faster – better – everywhere.



## CP 6212.540 Connection plate

State: 14/2/2026 (Source: [rittal.com/in-en](http://rittal.com/in-en))

ENCLOSURES

POWER DISTRIBUTION

CLIMATE CONTROL

IT INFRASTRUCTURE

SOFTWARE & SERVICES

FRIEDHELM LOH GROUP



# CP 6212.540 - Connection plate with reinforcement plate

For easy location of the command panel onto the support arm or pedestal.

## Features

Model No.	CP 6212.540
Design	For mounting Comfort Panel from a front panel width of 247 mm and installation depth of 152 mm Optipanel from a front panel width of 220 mm and installation depth of 150 mm Sheet steel from 135 mm installation depth For mounting on support arm system components Attachment CP 60/120 for support arm connection Ø 130 mm, 6206.320, 6212.320 Coupling CP 60/120/180 for support arm connection Ø 130 mm, 6206.300, 6212.300, 6218.300 Angle coupling 90°, system 60/120 for support arm connection Ø 130 mm, CP 6206.380, 6212.380 Tilting adaptor 10°, system 60/120 for support arm connection Ø 130 mm, CP 6206.400 Tilting adaptor ±45°, system 60/120 for support arm connection Ø 130 mm, CP 6206.420
Benefits	For easy location of the command panel onto the support arm or pedestal More space for cable entry
Material	Connection plate: Cast aluminium Reinforcement plate: Sheet steel, 6 mm
Colour	RAL 7035
Supply includes	Reinforcement plate Seals Assembly parts
Packs of	1 pc(s).
Net weight	1.3
Gross weight	1.604

# Features

Customs tariff number	76169990
EAN	4028177684232
ETIM 9	EC000882
ECLASS 8.0	27400556

# Approvals

Explanations	Manufacturer's declaration
--------------	----------------------------