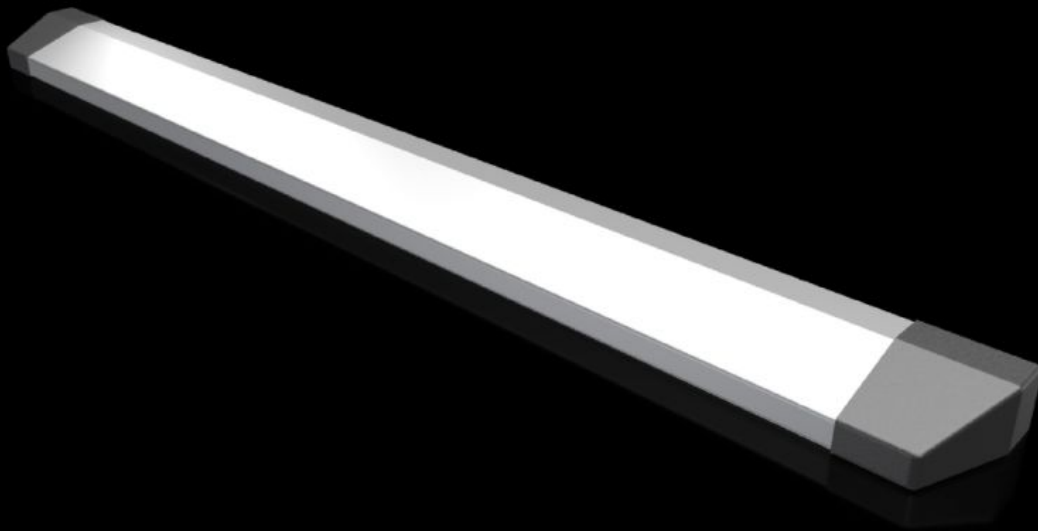


Rittal – The System.

Faster – better – everywhere.



CX 6730.800 CX aluminium strip

State: 9/7/2026 (Source: rittal.com/in-en)

ENCLOSURES

POWER DISTRIBUTION

CLIMATE CONTROL

IT INFRASTRUCTURE

SOFTWARE & SERVICES

FRIEDHELM LOH GROUP



CX 6730.800 - CX aluminium strip

Prevents wiring plans etc. from slipping off, and allows retrospective external mounting on CX desk units, consoles and one-piece consoles.



Features

Model No.	CX 6730.800
Material	Extruded aluminium section Cover caps: Plastic
Surface finish	Aluminium extruded section: natural anodised
Colour	Cover caps: RAL 7016
Supply includes	1 aluminium section 6 plastic covers Drilling template Assembly parts
Length	1,750 mm
Installation options	Easily cut to length for other sizes 3 x width 600 mm 2 x width 800 mm 1 x width 1000 mm + 1 x width 600 mm 1 x width 1200 mm 1 x width 1600 mm
To fit	CX console system CX one-piece console
Packs of	1 pc(s).
Net weight	1 kg
Gross weight	1.23 kg

Features

Customs tariff number	76169990
ETIM 9	EC002620
Product description	CX aluminium strip, L: 1750 mm
