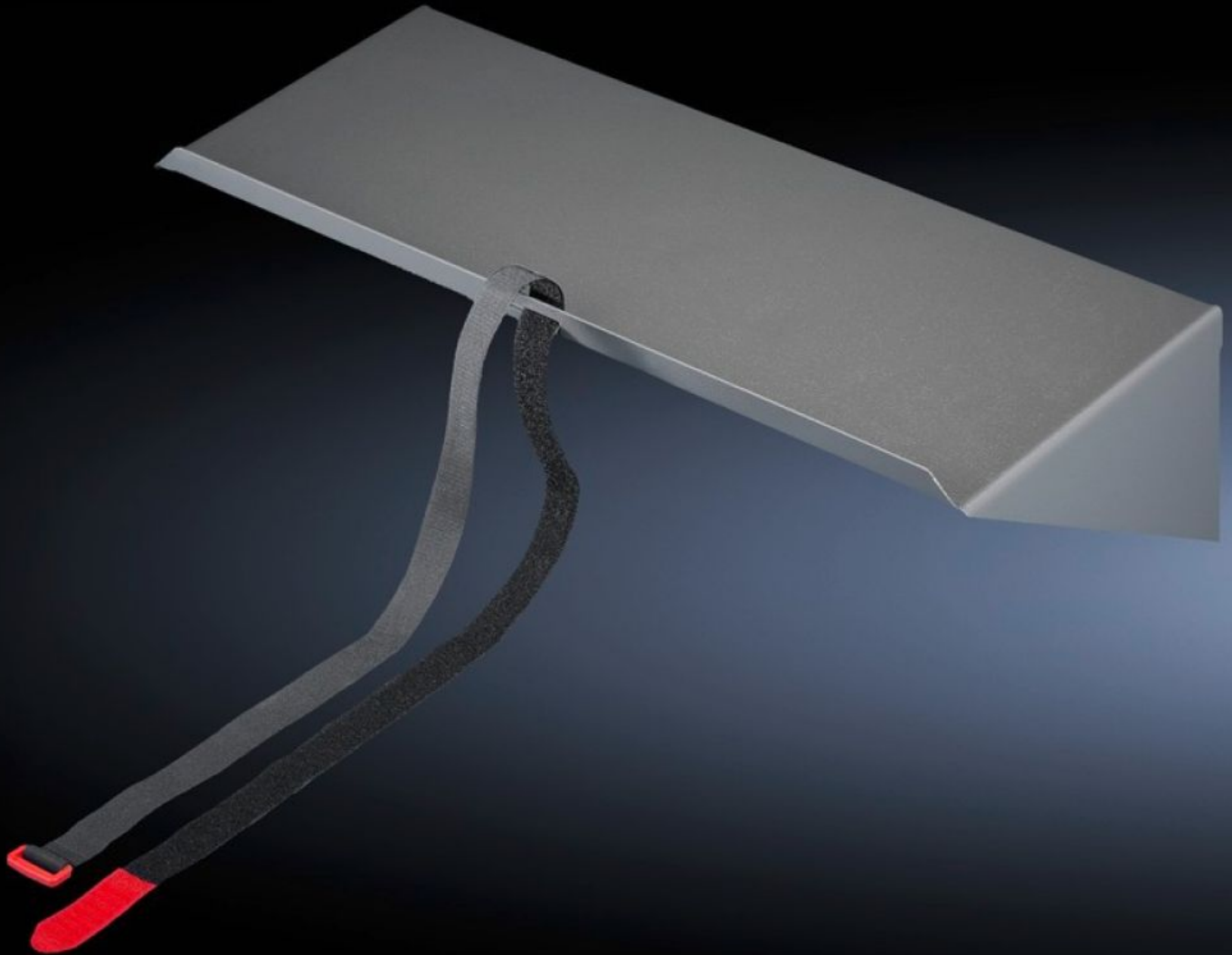


Rittal – The System.

Faster – better – everywhere.



IW 6902.950

Base

State: 15/7/2025 (Source: rittal.com/in-en)

ENCLOSURES

POWER DISTRIBUTION

CLIMATE CONTROL

IT INFRASTRUCTURE

SOFTWARE & SERVICES

FRIEDHELM LOH GROUP



IW 6902.950 - Base for tubular door frame

The space-saving alternative to component shelves for accommodating tower PCs (maximum 20 kg). For screw-fastening to the tubular door frame of 600 mm wide enclosures.

Features

Model No.	IW 6902.950
Product description	The space-saving alternative to component shelves for accommodating tower PCs (maximum 20 kg). For screw-fastening to the tubular door frame of 600 mm wide enclosures.
Material	Sheet steel
Surface finish	Spray-finished
Colour	RAL 7015
Supply includes	Retaining strap Assembly parts Support strip
Dimensions	Width: 445 mm Height: 159 mm Depth: 230 mm
Load capacity	20 kg
Note	The support strips included with the supply are suitable for door widths of 600 mm.
Packs of	1 pc(s).
Net weight	4.548
Gross weight	4.748
PCF per pack (cradle-to-gate)	16.4 kg CO2 eq (Cat B)
Note on PCF category	Category B: PCF value (cradle-to-gate) based on the product weight, approximately calculated and self-declared
Customs tariff number	94039910
EAN	4028177438729

Features

ETIM 9	EC002620
--------	----------

ECLASS 8.0	27189261
------------	----------