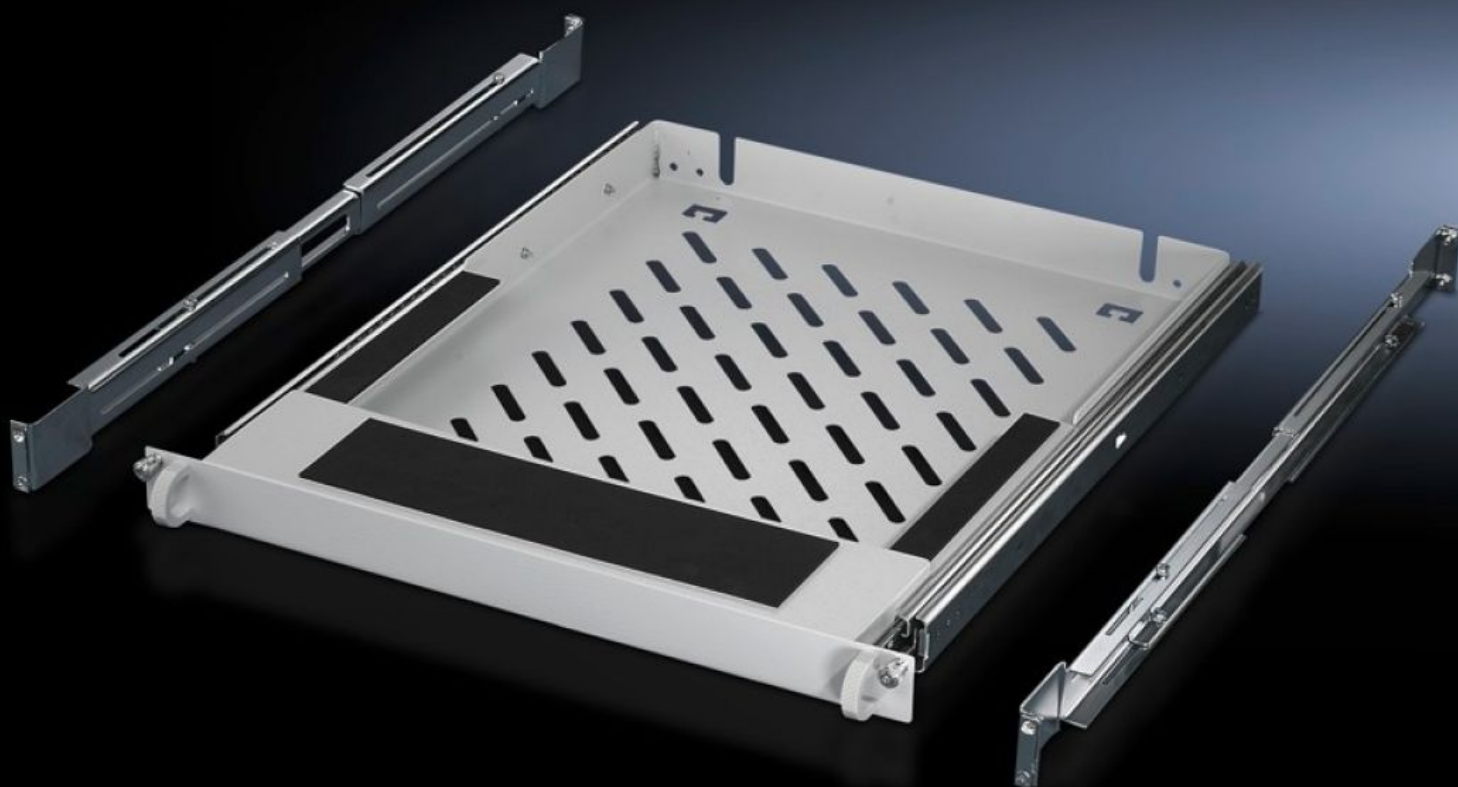
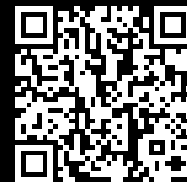


Rittal – The System.

Faster – better – everywhere.



DK 7063.888

Drawer 482.6 mm (19")

State: 16/5/2025 (Source: [rittal.com/in-en](https://www.rittal.com/in-en))

ENCLOSURES

POWER DISTRIBUTION

CLIMATE CONTROL

IT INFRASTRUCTURE

SOFTWARE & SERVICES

FRIEDHELM LOH GROUP



DK 7063.888 - Drawer 482.6 mm (19") for keyboard

For attaching to the 482.6 mm (19") mounting angles front and rear, suitable for standard keyboards > 482.6 mm (19"), keyboard support with non-slip base, plus wrist support.

Features

| | |
|-----------------------|---|
| Model No. | DK 7063.888 |
| Product description | For attaching to the 482.6 mm (19") mounting angles front and rear. Suitable for standard keyboards > 482.6 mm (19"). Keyboard support with non-slip base, plus wrist support. Depth-variable installation from 610 – 950 mm. Clearance opening W x H x D: 408 x 40 x 550 mm. |
| Material | Sheet steel |
| Colour | RAL 7035 |
| Supply includes | Assembly parts without keyboard |
| Dimensions | Width: 482.6 mm |
| Note | For mounting on L-shaped mounting angles, cranked mounting angles or mounting frames |
| Packs of | 1 pc(s). |
| Net weight | 8.028 |
| Gross weight | 8.451 |
| Customs tariff number | 94039910 |
| EAN | 4028177258983 |
| ECLASS 8.0 | 27189261 |

Tender text

482.6 mm (19") standard keyboard drawer

Drawer with assembly materials, without keyboard

Material: Sheet steel, spray finished in RAL 7035