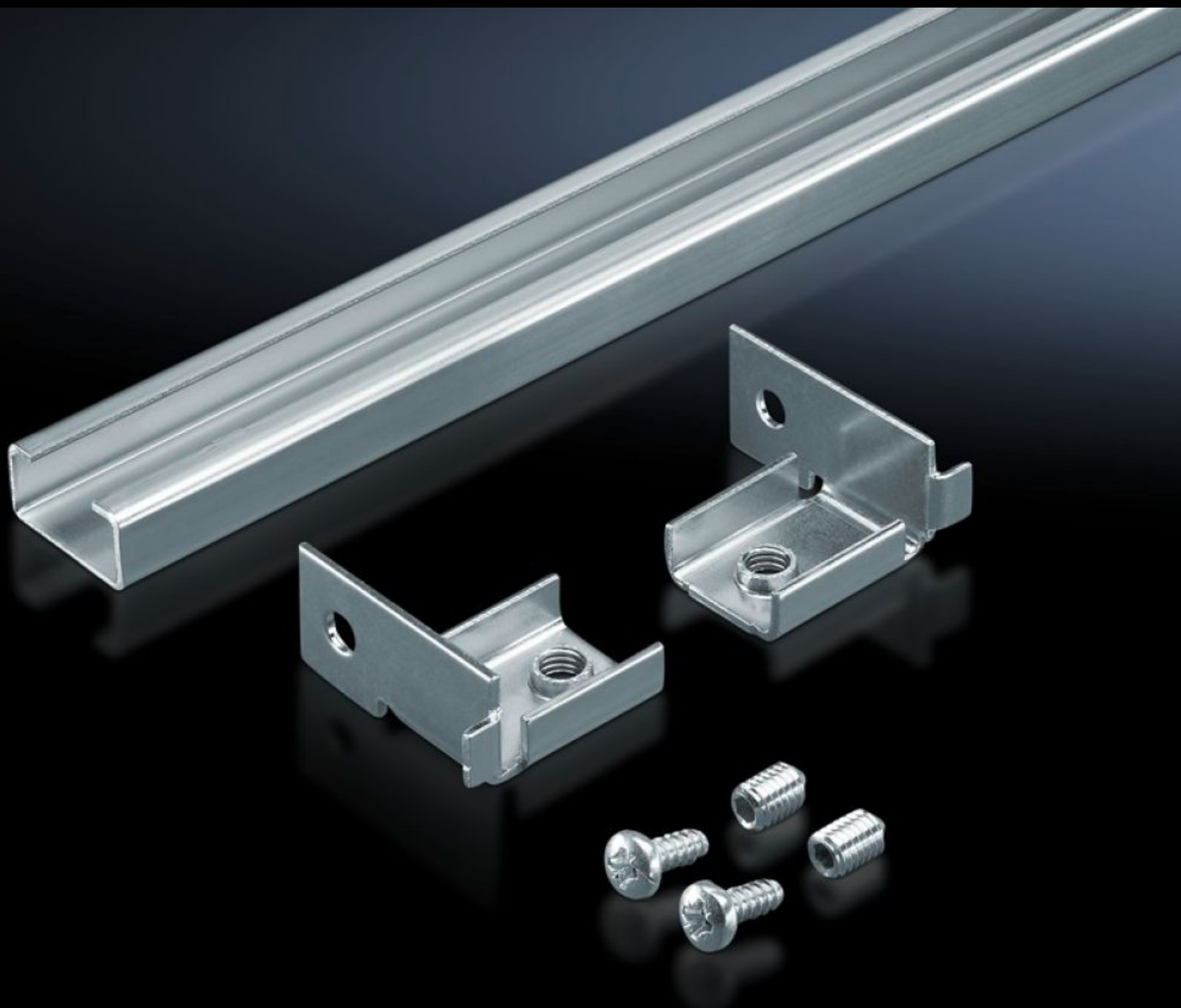


Rittal – The System.

Faster – better – everywhere.



DK 7102.000 C rails

State: 6/7/2025 (Source: [rittal.com/in-en](https://www.rittal.com/in-en))

ENCLOSURES

POWER DISTRIBUTION

CLIMATE CONTROL

IT INFRASTRUCTURE

SOFTWARE & SERVICES

FRIEDHELM LOH GROUP



DK 7102.000 - C rails for DK-TS

For direct mounting on the horizontal enclosure section.



Features

Model No.	DK 7102.000
Material	Sheet steel
Surface finish	Zinc-plated
Supply includes	Assembly parts
Length	1,090 mm
Installation options	On the horizontal enclosure sections On the vertical TS, VX SE enclosure section via adaptor rails for VX compatibility
To fit	Enclosure type: DK-TS Width: 1,200 mm Depth: 1,200 mm
Packs of	6 pc(s).
Net weight	5.058
Gross weight	5.322
Customs tariff number	73269098
EAN	4028177124622
ECLASS 8.0	27400501

Tender text

Cable clamp rail for PS, FM

For use as cable clamp rails

For enclosure width: Width: 1200 mm, length 1100 mm

Material: Sheet steel, zinc-plated, passivated

Dimensions (W x H x D): 30 mm x 15 mm x 1100 mm