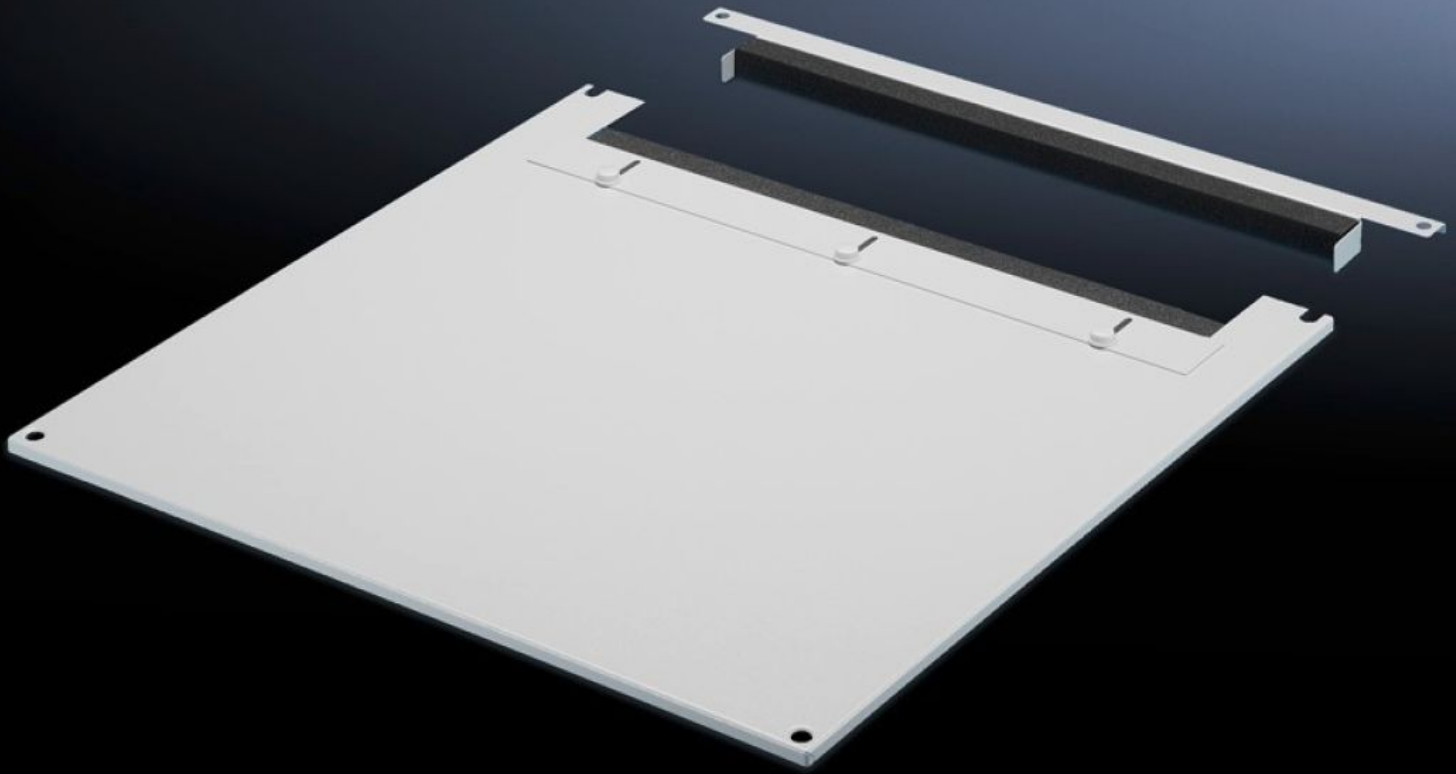


Rittal – The System.

Faster – better – everywhere.



TS 7826.685

Roof plate for cable entry, two-piece

State: 5/6/2026 (Source: rittal.com/in-en)

ENCLOSURES

POWER DISTRIBUTION

CLIMATE CONTROL

IT INFRASTRUCTURE

SOFTWARE & SERVICES

FRIEDHELM LOH GROUP



TS 7826.685 - Roof plate for cable entry, two-piece for VX, VX IT, TS, TS IT

The two-piece design allows easy retro-fitting, by simply removing the front part of the plate for retrospective cable entry.



Features

Model No.	TS 7826.685
Product description	In exchange for the standard roof. Equipped with a sliding angular bracket in the rear section. Rubber cable clamp strip on both sides for attaching cable bundles and bunched cables. Due to the symmetrical design of the frame, side cable entry can also be achieved by rotating the roof plate. The two-piece design allows convenient retrofitting.
Material	Sheet steel
Colour	RAL 7035
To fit	Width: 600 mm Depth: 800 mm
Packs of	1 pc(s).
Net weight	6.745 kg
Gross weight	7.1 kg
Customs tariff number	94039910
ETIM 9	EC000744
ECLASS 8.0	27182405
Product description	DK-TS8 Roof plate, WxD: 600x800 mm, 2-part, For cable entry

Tender text

Cable entry roof plate for TS, TS IT

W x D = 600 x 800 mm,

two-piece

Material: Sheet steel, spray finished in RAL 7035

Dimensions (W x D): 600 mm x 800 mm