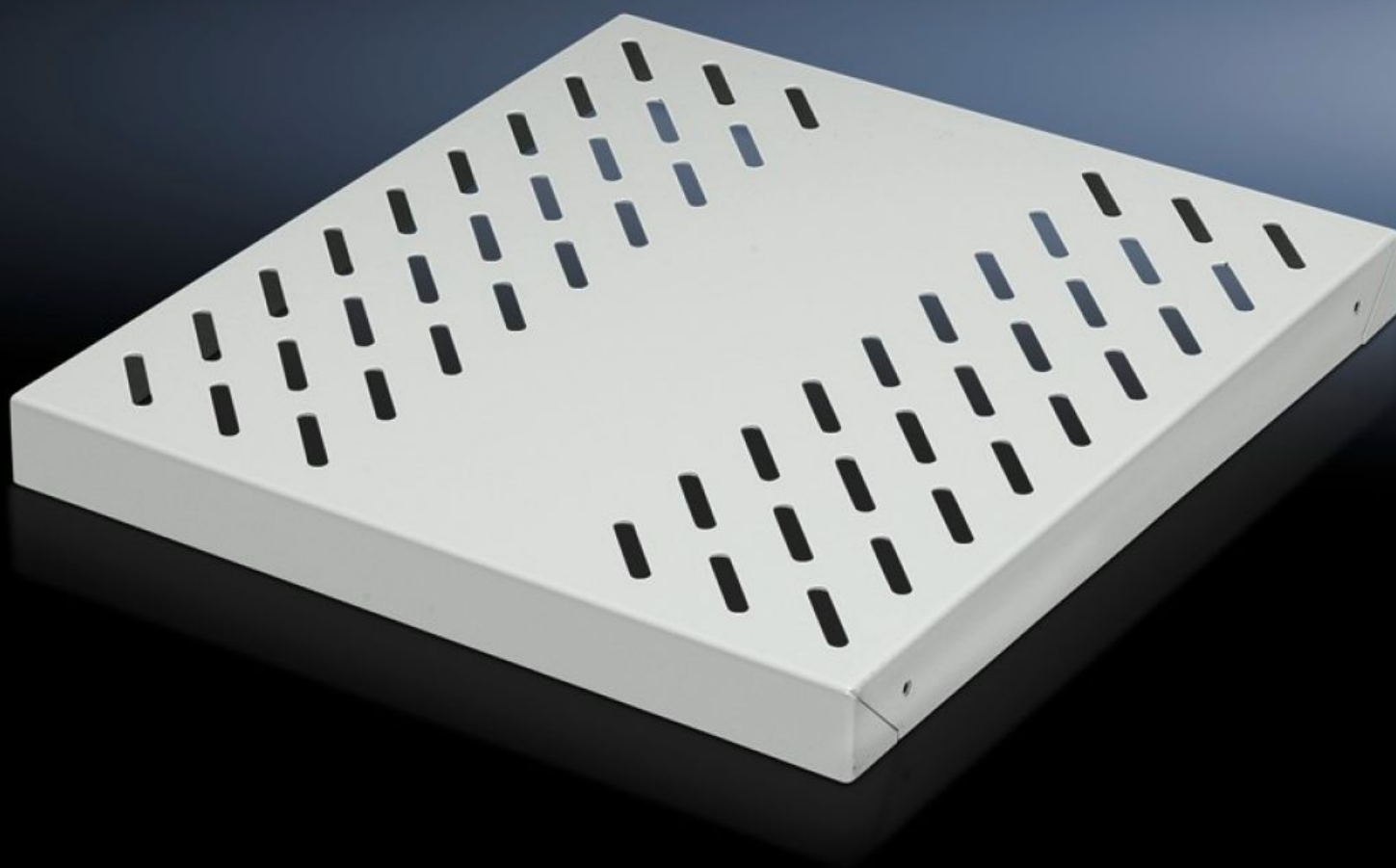
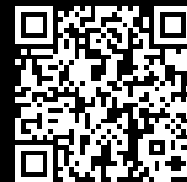


Rittal – The System.

Faster – better – everywhere.



DK 7828.970

Component shelf, heavy duty

State: 7/12/2025 (Source: rittal.com/in-en)

ENCLOSURES

POWER DISTRIBUTION

CLIMATE CONTROL

IT INFRASTRUCTURE

SOFTWARE & SERVICES

FRIEDHELM LOH GROUP



DK 7828.970 - Component shelf, heavy duty for network enclosures TS with cranked mounting angles

For static installation between two 482.6 mm (19 1/8") mounting levels, they are located directly onto the cranked mounting angles, load capacity: 75 kg for zinc-plated version, 100 kg for spray-finished version.

Features

| | |
|----------------------------------|---|
| Model No. | DK 7828.970 |
| Design | Zinc-plated |
| Product description | For static installation between two 482.6 mm (19 1/8") mounting levels. The component shelf is located directly onto the cranked mounting angles. |
| Material | Sheet steel |
| Surface finish | Zinc-plated |
| Supply includes | Assembly parts |
| Distance between mounting levels | 698 mm |
| Load capacity | 75 kg surface load, static |
| Note | Not suitable for combination with telescopic slides. |
| Dimensions | Width: 452.5 mm Height: 20 mm Depth: 678 mm |
| Packs of | 1 pc(s). |
| Net weight | 3.621 |
| Gross weight | 3.821 |
| Customs tariff number | 94039910 |
| EAN | 4028177233317 |
| ECLASS 8.0 | 27189261 |

Tender text

Component shelf for 2 mounting levels, static installation

Component shelf for static installation between two 19" mounting levels.

Mounted directly on the mounting angles.

The component shelf uses ventilation slots, which ensures economical air exchange between the separate layers.

For mounting on cranked mounting angles.

Load capacity: 75 kg surface load

Material: Sheet steel

Spray finish: RAL 7035

For distance between levels: 700 mm