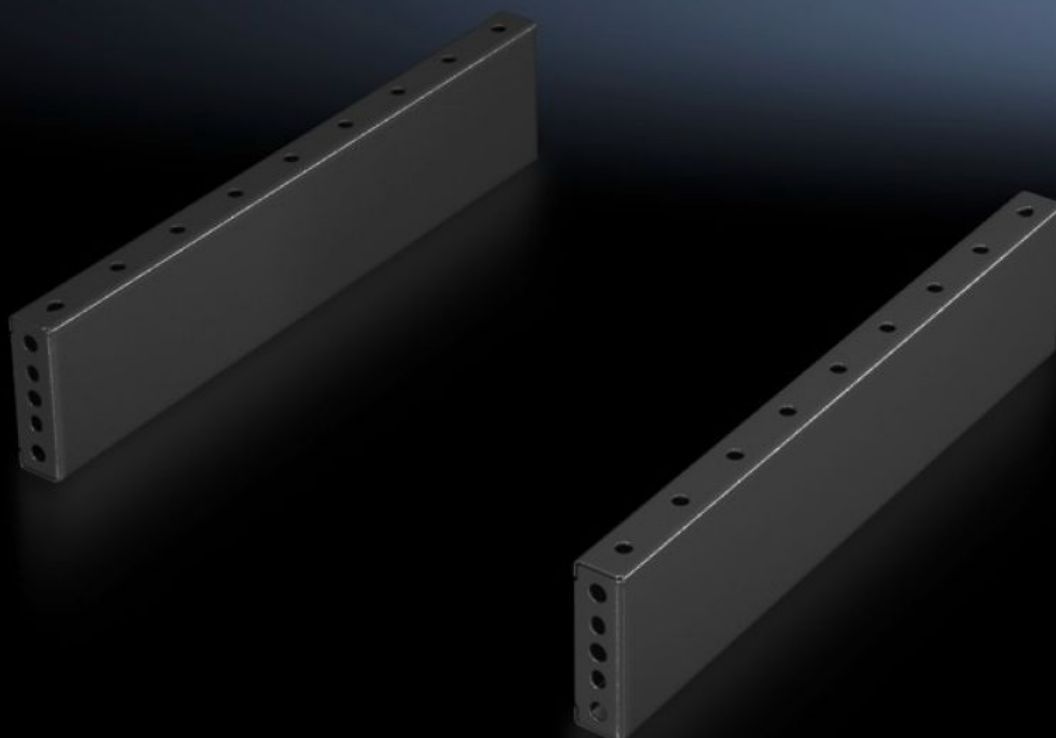
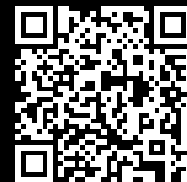


# Rittal – The System.

Faster – better – everywhere.



## TS 8601.080

## Base/plinth trim panels, side, 100 mm

State: 23/7/2025 (Source: [rittal.com/in-en](http://rittal.com/in-en))

ENCLOSURES

POWER DISTRIBUTION

CLIMATE CONTROL

IT INFRASTRUCTURE

SOFTWARE & SERVICES

FRIEDHELM LOH GROUP



# TS 8601.080 - Base/plinth trim panels, side, 100 mm for base/plinth components front and rear

For mounting between the base/plinth components. At 200 mm height, two 100 mm base/plinth trims may be used. Base/plinth trims may be installed rotated through 90° in order to stabilise bayed base/plinth components.

## Features

|                       |  |
|-----------------------|--|
| Model No.             | TS 8601.080  |
| Product description   | For mounting between the base/plinth components. At 200 mm height, two 100 mm base/plinth trim panels may be used.   |
| Material              | Sheet steel  |
| Surface finish        | Spray-finished   |
| Colour                | RAL 7022   |
| Supply includes       | 2 base/plinth trim panels<br>Assembly parts  |
| Assembly instruction  | Base/plinth trim panels, side, 100 mm, may be installed rotated through 90° to stabilise bayed base/plinth components. The base/plinth baying bracket is required for this purpose |
| Dimensions            | Height: 100 mm   |
| To fit                | Enclosure type: TS: = 800 mm<br>Enclosure type: SE<br>Enclosure type: CM<br>Enclosure type: TP<br>Enclosure type: PC<br>Enclosure type: IW<br>Enclosure type: TS IT                |
| Packs of              | 2 pc(s).   |
| Net weight            | 2.66   |
| Gross weight          | 2.86   |
| Customs tariff number | 94039910   |

# Features

|            |               |
|------------|---------------|
| EAN        | 4028177208667 |
| ECLASS 8.0 | 27182003      |