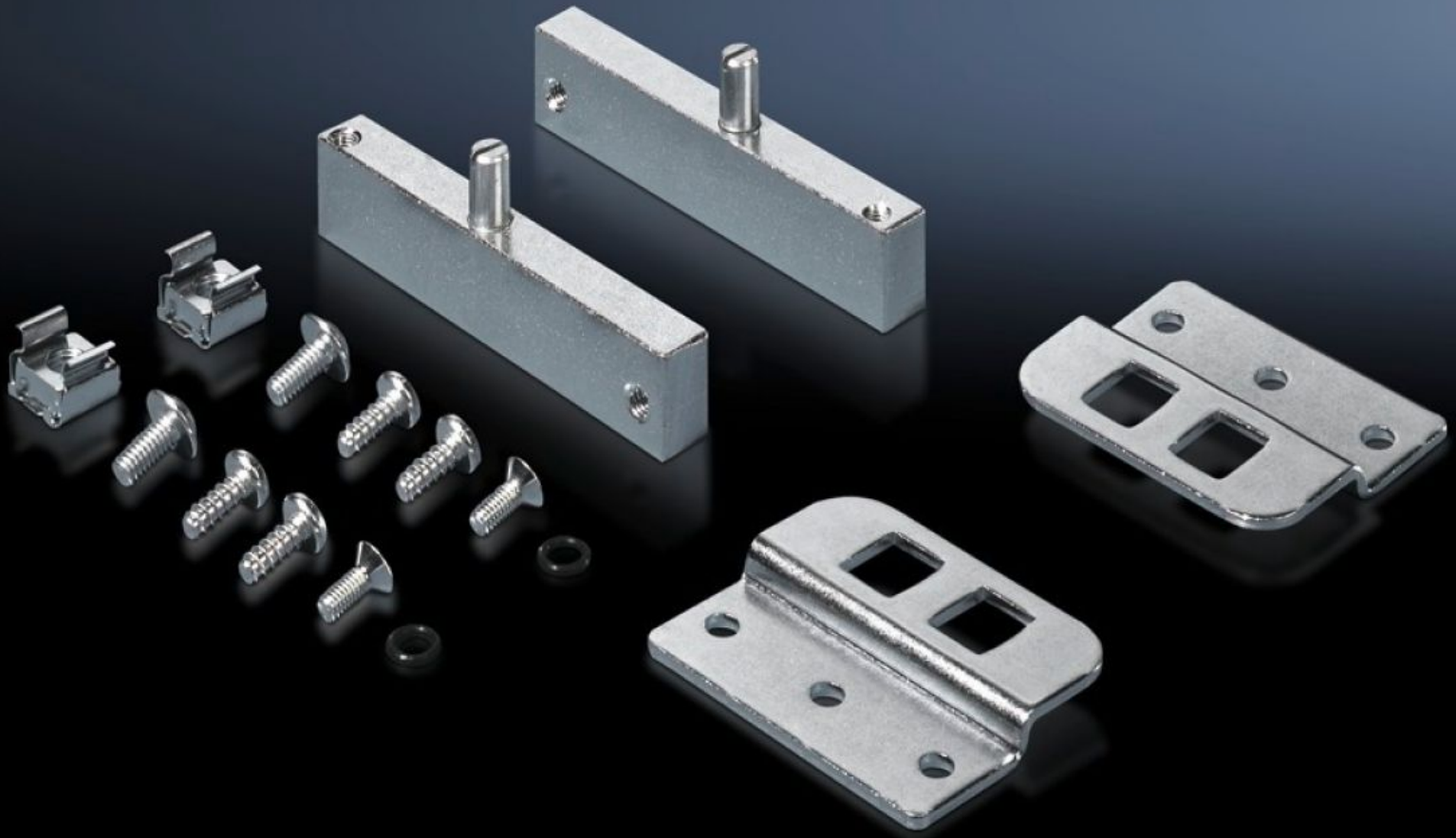


**Rittal – The System.**

Faster – better – everywhere.



# TS 8614.100 Hinge attachment

State: 23/5/2026 (Source: [rittal.com/in-en](http://rittal.com/in-en))

ENCLOSURES

POWER DISTRIBUTION

CLIMATE CONTROL

IT INFRASTRUCTURE

SOFTWARE & SERVICES

FRIEDHELM LOH GROUP



# TS 8614.100 - Hinge attachment for partial mounting plate TS, VX SE

For vertically hinged attachment of partial mounting plates.



## Features

Model No.	TS 8614.100
Product description	For fitting partial mounting plates on installation kits for swing frames, small.
Material	Steel
Surface finish	Zinc-plated
Supply includes	Assembly parts
Assembly instruction	In conjunction with the hinge for side panel, with an enclosure depth of 600 or 800 mm, side installation is identical to installation parallel to the front.
Packs of	1 pc(s).
Net weight	0.44 kg
Gross weight	0.534 kg
Customs tariff number	83024900
ETIM 9	EC001167
ECLASS 8.0	27409219
Product description	TS Hinge attachment, for partial mounting plate TS, SE