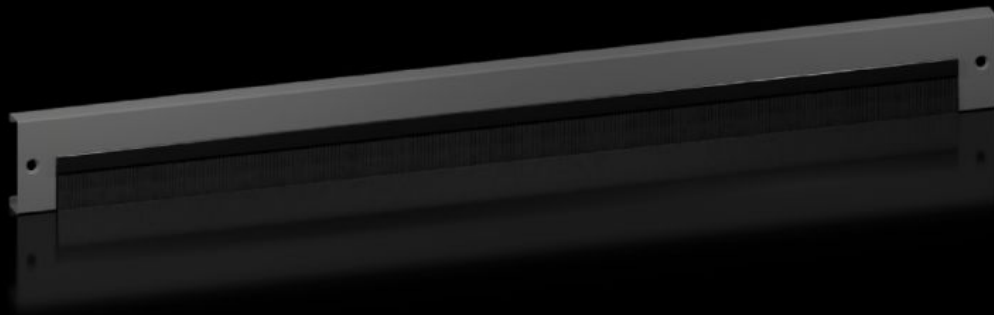


Rittal – The System.

Faster – better – everywhere.



VX 8660.095

Base/plinth trim panels with brush strip

State: 9/7/2026 (Source: rittal.com/in-en)

ENCLOSURES

POWER DISTRIBUTION

CLIMATE CONTROL

IT INFRASTRUCTURE

SOFTWARE & SERVICES

FRIEDHELM LOH GROUP



VX 8660.095 - Base/plinth trim panels with brush strip for base/plinth system VX, sheet steel

For cable entry in the base/plinth. With a 200 mm base/plinth height, one or two trim panels with brush strip may optionally be used. Thanks to the optional trim panel attachment, the trim panels with brush strip may also be fitted at the front, rear or side of the base/plinth corner piece.

Features

Model No.	VX 8660.095
Design	with brush strip
Material	Base/plinth trims: Sheet steel Brush strip: Plastic, self-extinguishing
Colour	RAL 9005
Dimensions	Height: 100 mm
To fit	Enclosure type: VX VX IT VX SE TX CableNet TS TS IT TP PC IW CX Width/depth: 1,200 mm
Packs of	2 pc(s).
To fit	for base/plinth system VX, sheet steel
Assembly instruction	For installation in the depth, the optional trim panel attachment is required.
Net weight	2.5 kg
Gross weight	2.554 kg
Customs tariff number	94039910

Features

ETIM 9	EC000721
ETIM 8	EC000721
ECLASS 8.0	27182003
Product description	VX base/plinth trim panel with brush strip, for width/depth: 1200 mm
