

Rittal – The System.

Faster – better – everywhere.



VX 8660.110 Transport castors

State: 3/4/2026 (Source: rittal.com/in-en)

ENCLOSURES

POWER DISTRIBUTION

CLIMATE CONTROL

IT INFRASTRUCTURE

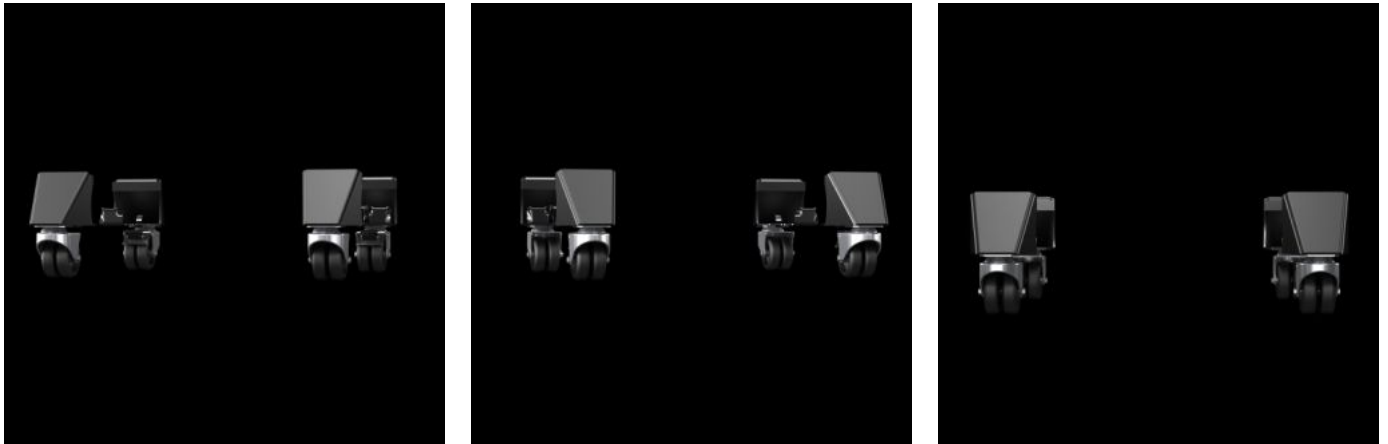
SOFTWARE & SERVICES

FRIEDHELM LOH GROUP



VX 8660.110 - Transport castors for base/plinth system VX, sheet steel

For locating onto the base/plinth corner piece 100 or 200 mm high.



Features

Model No.	VX 8660.110
Colour	RAL 9005
Supply includes	4 twin castors, 2 x with, 2 x without locks
Clearance floor	100 mm
Load capacity	Max. dynamic load when using 4 twin castors (single enclosure): 3000 N
Weight/pack	8.63 kg
Packs of	1 pc(s).
Net weight	8.4 kg
Gross weight	8.631 kg
Customs tariff number	83024900
ETIM 9	EC002621
ETIM 8	EC000721
ECLASS 8.0	27182003
Product description	VX transport castors, 2 x with/without locks