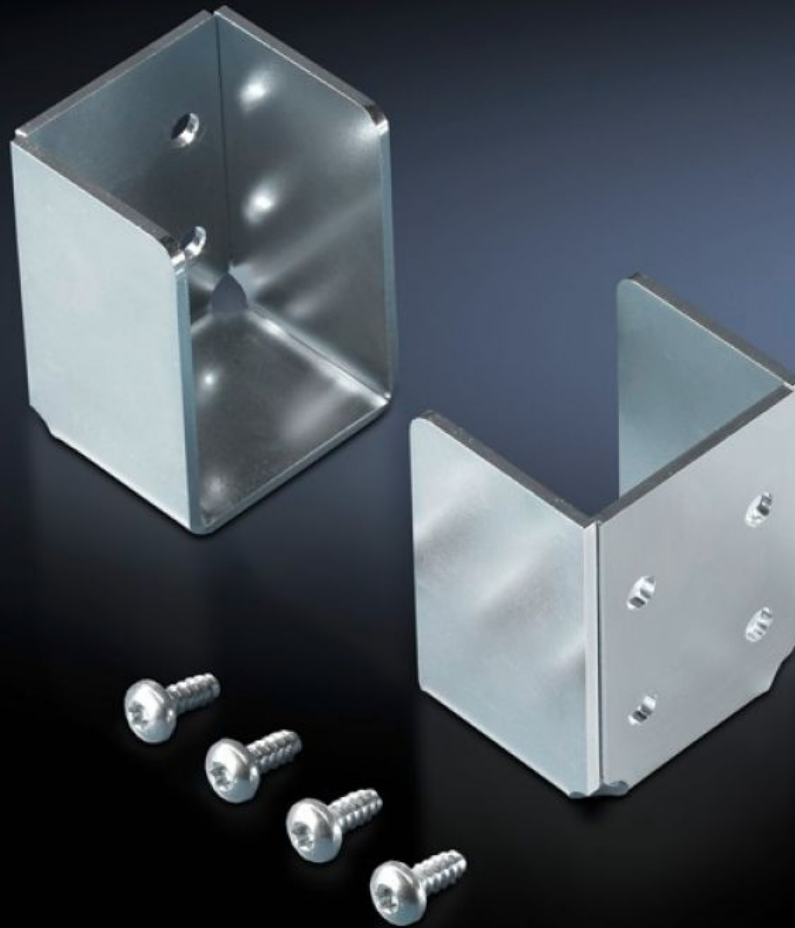


# Rittal – The System.

Faster – better – everywhere.



## TS 8801.000 Holder

State: 22/5/2026 (Source: [rittal.com/in-en](http://rittal.com/in-en))

ENCLOSURES

POWER DISTRIBUTION

CLIMATE CONTROL

IT INFRASTRUCTURE

SOFTWARE & SERVICES

FRIEDHELM LOH GROUP



# TS 8801.000 - Holder for protective bars

For mounting on the vertical section. The protective bar is simply inserted.

## Features

Model No.	TS 8801.000
Product description	For mounting on the vertical section. The protective bar is simply inserted.
Material	Sheet steel
Surface finish	Zinc-plated
Supply includes	Assembly parts
Packs of	2 pc(s).
Net weight	0.35 kg
Gross weight	0.368 kg
PCF per pack (cradle-to-gate)	1.7 kg CO2 eq (Cat B)
Note on PCF category	Category B: PCF value (cradle-to-gate) based on the product weight, approximately calculated and self-declared
Customs tariff number	83024900
ETIM 9	EC002620
ECLASS 8.0	27189261
Product description	TS Holder for protective bar