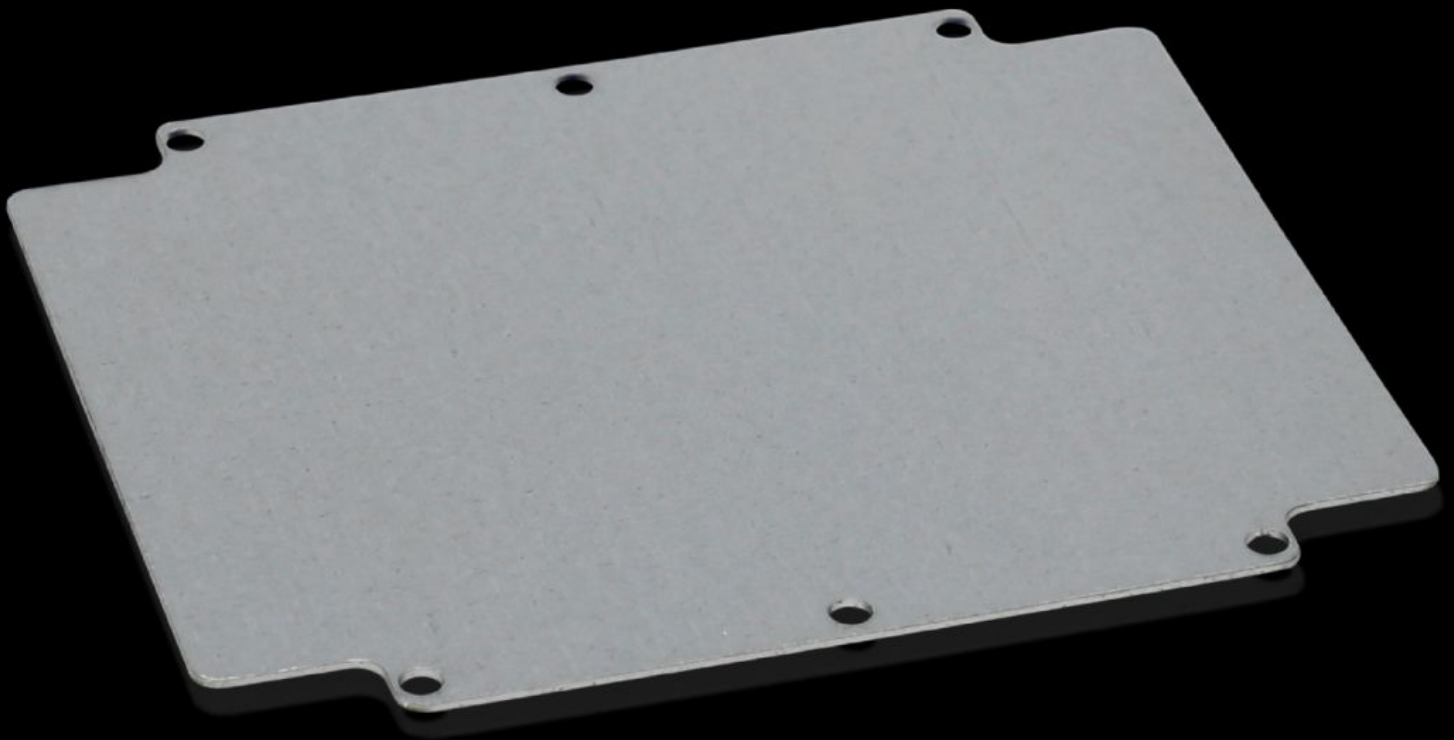


Rittal – The System.

Faster – better – everywhere.



GA 9116.700 Mounting plate

State: 22/5/2026 (Source: rittal.com/in-en)

ENCLOSURES

POWER DISTRIBUTION

CLIMATE CONTROL

IT INFRASTRUCTURE

SOFTWARE & SERVICES

FRIEDHELM LOH GROUP



GA 9116.700 - Mounting plate for GA

For individual interior installation, with mounting holes.



Features

Model No.	GA 9116.700
Product description	For universal interior installation, with mounting holes.
Material	Sheet steel
Surface finish	Zinc-plated
Dimensions mounting plate (W x H)	183 mm x 214 mm
To fit	Enclosure type: GA Width: = 202 mm Height: = 232 mm
Packs of	1 pc(s).
Net weight	0.4 kg
Gross weight	0.442 kg
PCF per pack (cradle-to-gate)	4.5 kg CO2 eq (Cat B)
Note on PCF category	Category B: PCF value (cradle-to-gate) based on the product weight, approximately calculated and self-declared
Customs tariff number	94039910
ETIM 9	EC000213
ECLASS 8.0	27409216
Product description	GA Mounting plate, WH: 183x214 mm