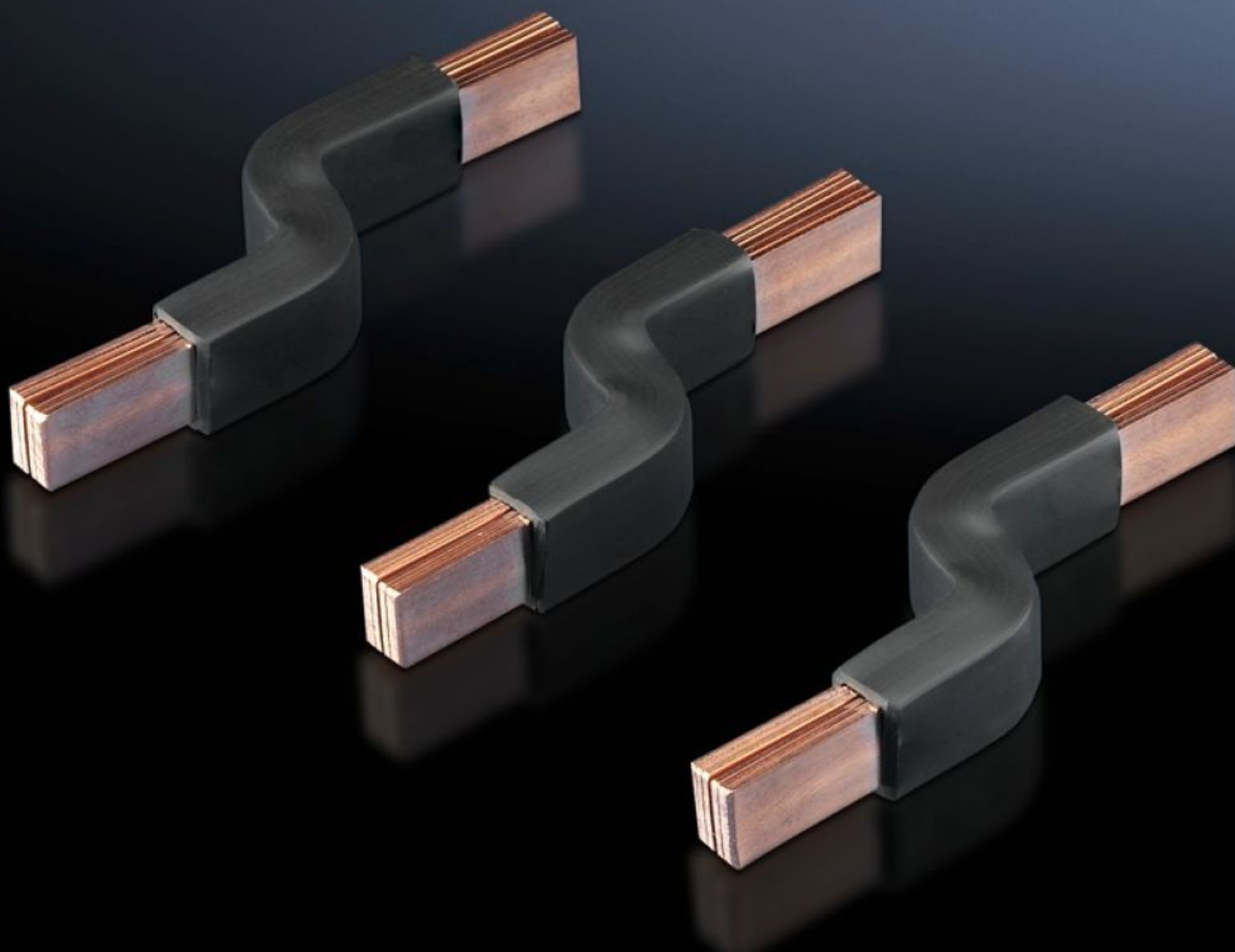


Rittal – The System.

Faster – better – everywhere.



SV 9342.570 Connection bracket

State: 13/2/2026 (Source: rittal.com/in-en)

ENCLOSURES

POWER DISTRIBUTION

CLIMATE CONTROL

IT INFRASTRUCTURE

SOFTWARE & SERVICES

FRIEDHELM LOH GROUP



SV 9342.570 - Connection bracket for circuit-breaker component adaptors

Pre-assembled, laminated flat copper for connecting standard, commercially available circuit-breakers.



Features

| | |
|---------------------------------|---|
| Model No. | SV 9342.570 |
| Product description | Pre-assembled, laminated flat copper for connecting standard, commercially available moulded case circuit-breakers (MCCB). |
| Material | Electrolytic copper F20 |
| Note | Universal application for switchgear with a dimensional difference between the mounting level and the upper edge of the contact level of 20 ± 5 mm. |
| To fit Model No. | 9342.500 9342.510 9342.540 9342.550 |
| Version – laminated flat copper | Number of lamina: 6 Membrane width: 9 mm Membrane thickness: 0.8 mm |
| To fit manufacturer (model) | ABB (T1, T1 UL, T2, T2 UL) Eaton (NZM1, NZM1 UL, BZM B1) Schneider Electric (NSC100, NSE75, NSE100) |
| Packs of | 3 pc(s). |
| Net weight | 0.096 |

Features

| | |
|------------------------------|---------------|
| Gross weight | 0.103 |
| Copper weight (kg per piece) | 0.032 |
| Customs tariff number | 85446010 |
| EAN | 4028177551947 |
| ETIM 9 | EC002270 |
| ECLASS 8.0 | 27409221 |

Approvals

| | |
|--------------|---|
| Explanations | Declaration of conformity Declaration of conformity UK |
|--------------|---|