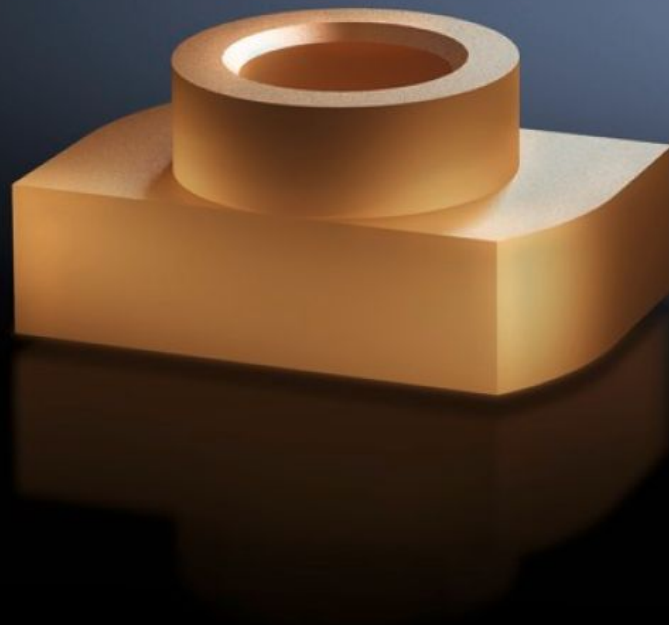


# Rittal – The System.

Faster – better – everywhere.



## SV 9650.900

## Sliding nut

State: 8/11/2025 (Source: rittal.com/in-en)

ENCLOSURES

POWER DISTRIBUTION

CLIMATE CONTROL

IT INFRASTRUCTURE

SOFTWARE & SERVICES

FRIEDHELM LOH GROUP



# SV 9650.900 - Sliding nut for Maxi-PLS busbars

May be retro-fitted by sliding into the Maxi-PLS busbar section.

## Features

---

Model No.	SV 9650.900
Product description	For attaching flat copper bars and connection components to Maxi-PLS busbars. For sliding into the busbar section retrospectively and tightening the threaded bolts.
Material	E-Cu
To fit busbars	Maxi-PLS 60
Dimensions	Thread: M6
Packs of	15 pc(s).
Net weight	0.3
Gross weight	0.367
Customs tariff number	73181692
EAN	4028177239685
ETIM 9	EC000096
ECLASS 8.0	23110804

## Approvals

---

Approvals	UL + C-UL (listed)
-----------	--------------------