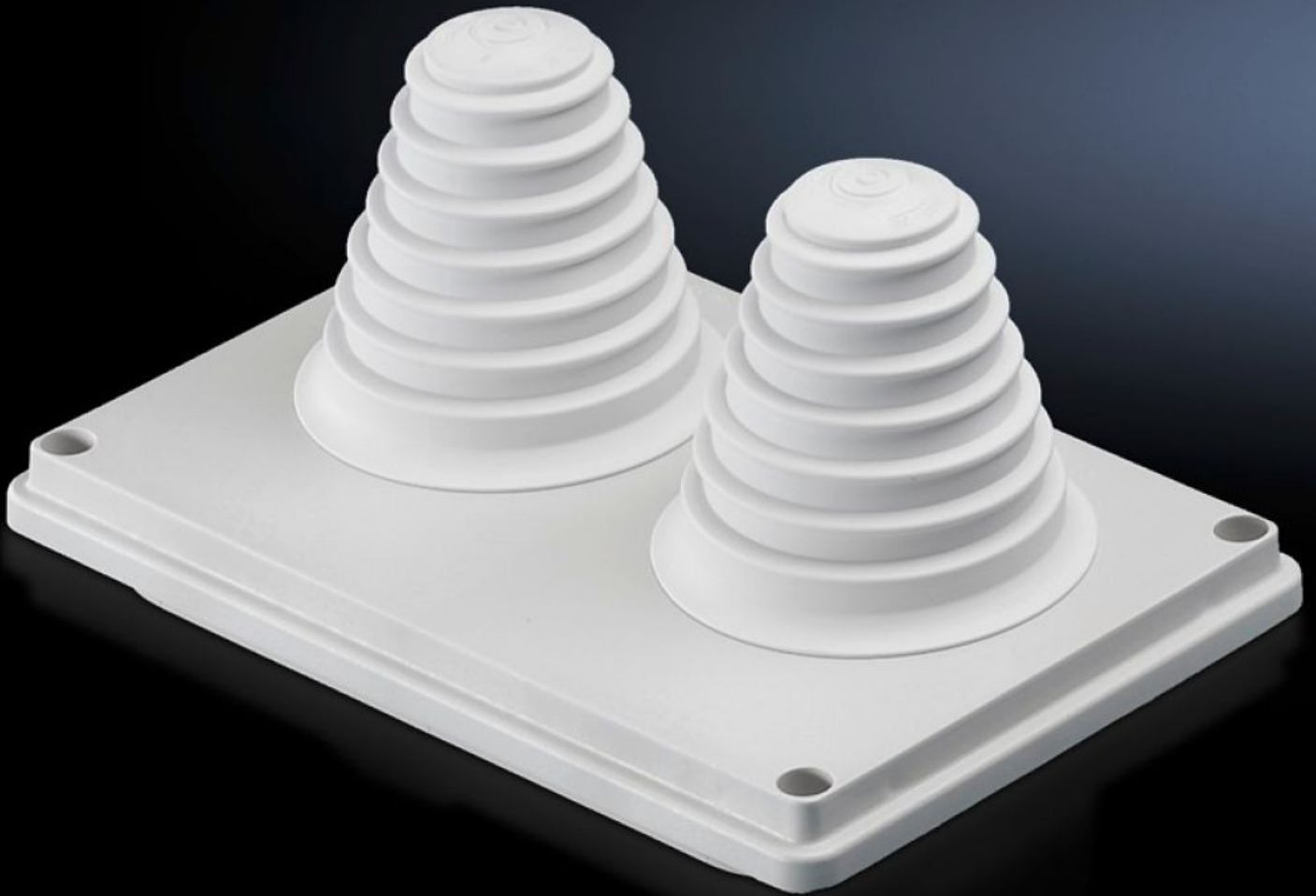


Rittal – The System.

Faster – better – everywhere.



SV 9665.780

Cable entry gland

State: 10/7/2026 (Source: rittal.com/in-en)

ENCLOSURES

POWER DISTRIBUTION

CLIMATE CONTROL

IT INFRASTRUCTURE

SOFTWARE & SERVICES

FRIEDHELM LOH GROUP



SV 9665.780 - Cable entry gland for roof plate

Cable entry glands for roof plates, with metric knockouts, sealing membranes, entry glands, or sealed.



Features

| | |
|-------------------------------------|--|
| Model No. | SV 9665.780 |
| Design | with entry fittings up to Ø 66 mm |
| Product description | For simple, secure cable entry in the roof zone. |
| Material | Insulating material |
| Colour | RAL 7035 |
| Supply includes | Seal included |
| Dimensions | Width: 250 mm Depth: 160 mm |
| IP protection category to IEC 60529 | IP 55 |
| Packs of | 1 pc(s). |
| Net weight | 0.38 kg |
| Gross weight | 0.39 kg |
| Customs tariff number | 39269097 |
| ETIM 9 | EC000211 |
| ECLASS 8.0 | 27142421 |
| Product description | SV Cable entry gland, with entry glands up to Ø 66 mm, insulating material |