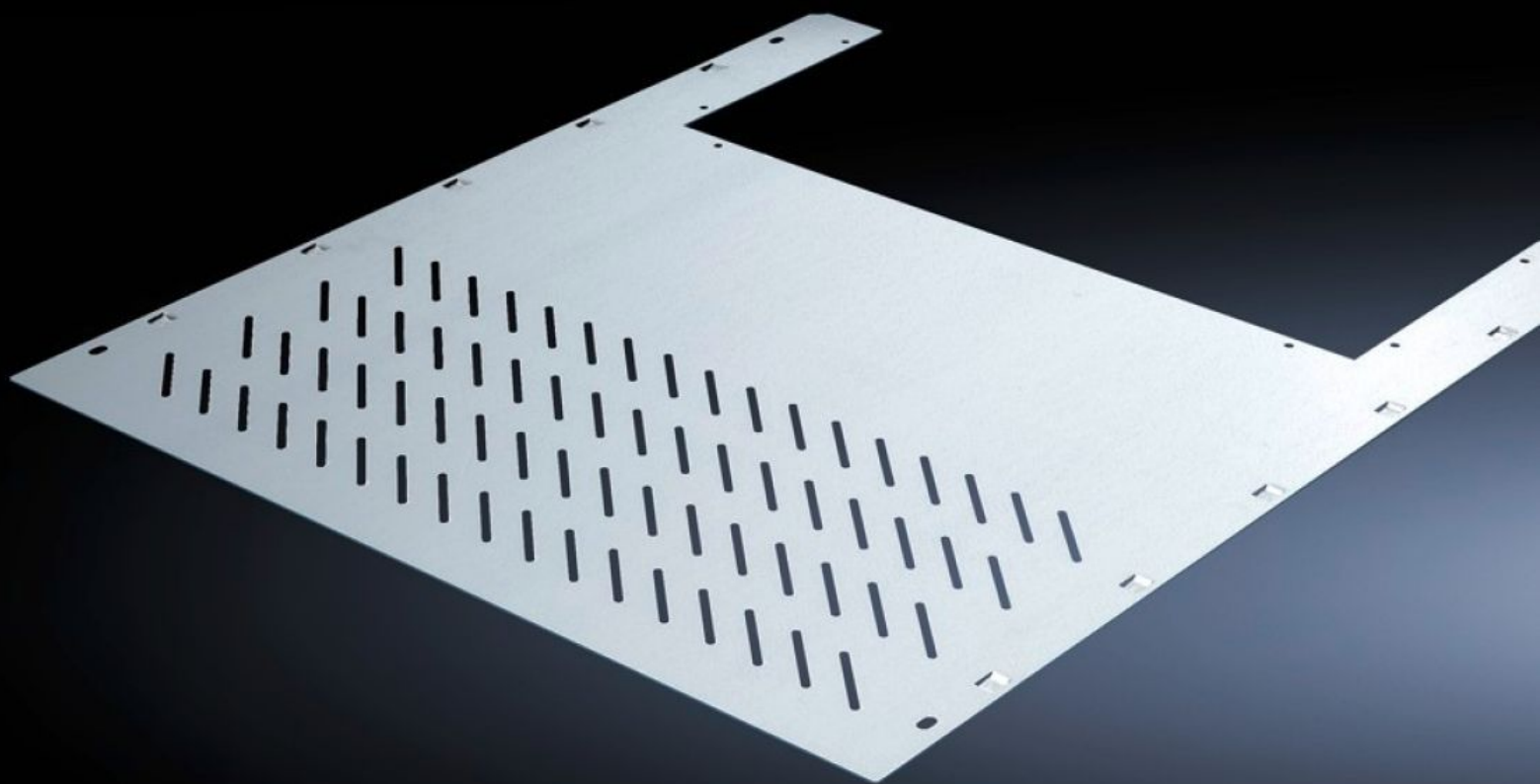


Rittal – The System.

Faster – better – everywhere.



SV 9673.456

Compartment divider

State: 28/8/2025 (Source: rittal.com/in-en)

ENCLOSURES

POWER DISTRIBUTION

CLIMATE CONTROL

IT INFRASTRUCTURE

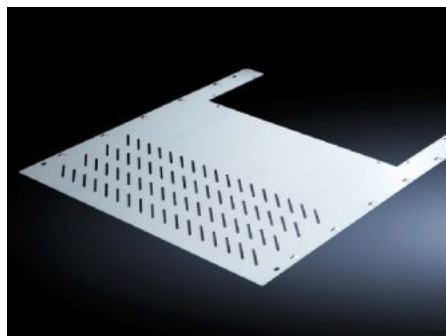
SOFTWARE & SERVICES

FRIEDHELM LOH GROUP



SV 9673.456 - Compartment divider with duct for vertical busbar systems

For the horizontal separation of compartments with vertical busbars.



Features

Model No.	SV 9673.456
Design	With louvres
Product description	For the horizontal separation of compartments with vertical busbars. In combination with the side panel modules, this creates Form separation in accordance with Form 3 or 4.
Material	Sheet steel, 1.25 mm
Surface finish	Zinc-plated
Mounting cut-out	Width:412 mm Depth:201 mm
For compartment depth	600 mm
Assembly instruction	2 mounting brackets are required to install each compartment divider.
Dimensions	Width: 506 mm Depth: 588 mm
To fit	Width: = 600 mm
Packs of	4 pc(s).
Net weight	7.976
Gross weight	8.395

Features

Customs tariff number	73269098
EAN	4028177571037
ETIM 9	EC002525
ECLASS 8.0	27400613