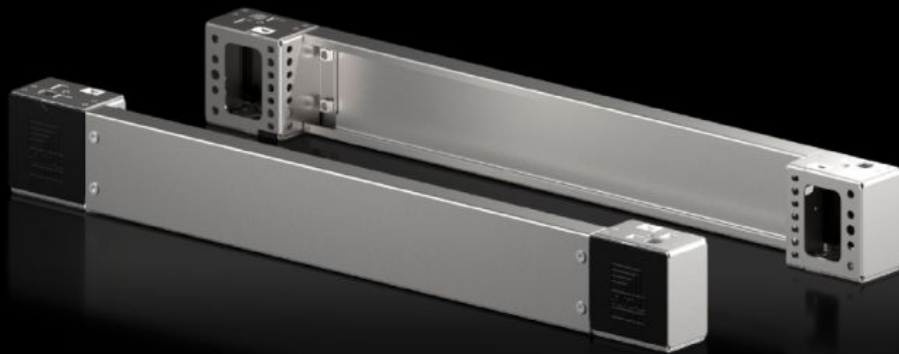


Rittal – The System.

Faster – better – everywhere.



VX 8660.051

Base/plinth corner pieces with
base/plinth trim panels, front and
rear for VX base/plinth system,
stainless steel



ENCLOSURES

POWER DISTRIBUTION

CLIMATE CONTROL

IT INFRASTRUCTURE

SOFTWARE & SERVICES

FRIEDRICH LOH GROUP



VX 8660.051 - Base/plinth corner pieces with base/plinth trim panels, front and rear for VX base/plinth system, stainless steel New version

Base/plinth corner pieces with front and rear trim panel. Large openings in the base/plinth corner piece for optimum access to the screw connection. Seamlessly bayable.



Функции

Арт. №	VX 8660.051
Материал	Угловой элемент цоколя: нержавеющая сталь 1.4301 (AISI 304) Панель цоколя передняя/задняя: нержавеющая сталь 1.4301 (AISI 304) Заглушки: ABS
Поверхность	Шлифовка, зерно 400
Комплект поставки	Вкл. крепежный материал 4 угловых элемента 4 заглушки 2 панели цоколя, передняя/задняя, высота 100 мм
Указание	Side base/plinth trim panels are required to finish off a base/plinth unit and also for additional stability between the base/plinths. If necessary, the cover caps included with the supply may be exchanged for stainless steel cover caps for VX base/plinth system, stainless steel. Components from the 1st generation base/plinth system cannot be combined with components from the 2nd generation base/plinth system
Размер	Высота: 100 мм

Функции

Подходит для	Тип корпуса: VX VX SE TS PC Ширина: = 800 мм
Type rating согл. UL 50E	Type 1 Type 3R Type 4 Type 4X Type 12
Упаковка	2 шт.
Вес нетто	4,6 kg
Gross weight	4,826 kg
Код ТНВЭД	94039910
ETIM 9	EC000721
ETIM 8	EC000721
ECLASS 8.0	27182003
Описание продукта	VX base/plinth corner piece with trim panel, front and rear, H: 100 mm, for W: 800 mm, stainless steel, 1.4301

Одобрения

Одобрения	UL + C-UL - FTТА
-----------	------------------