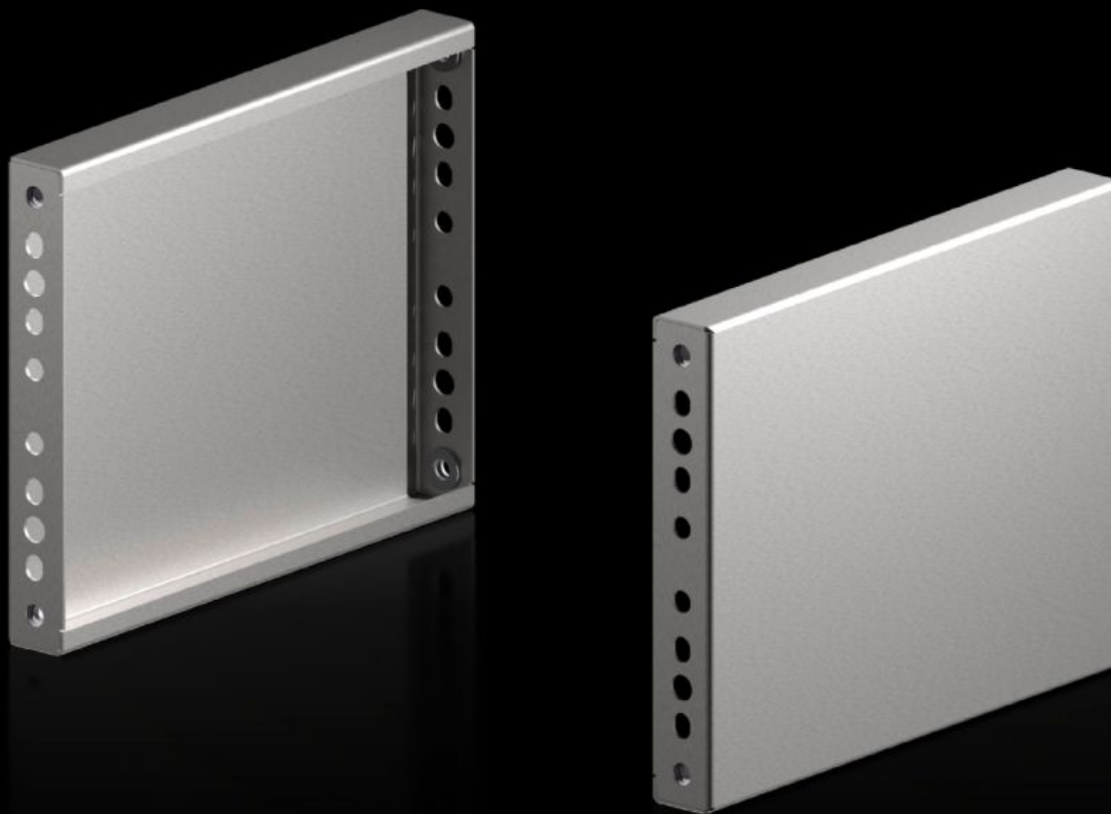
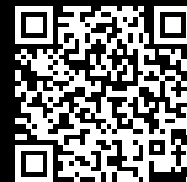


Rittal – The System.

Faster – better – everywhere.



VX 8660.080

Base/plinth trim panels, sides, for VX base/plinth system, stainless steel

Состояние: 21.12.2025 (Источник: rittal.com/kz-ru)

ENCLOSURES

POWER DISTRIBUTION

CLIMATE CONTROL

IT INFRASTRUCTURE

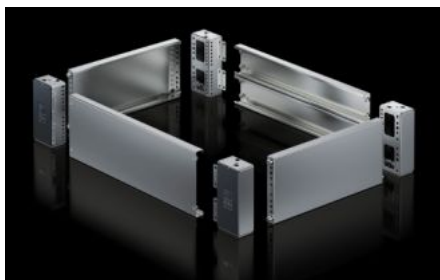
SOFTWARE & SERVICES

FRIEDHELM LOH GROUP



VX 8660.080 - Base/plinth trim panels, sides, for VX base/plinth system, stainless steel New version

Stainless steel base/plinth trim panels are used in the depth to finish off a base/plinth unit at the sides.



Функции

Арт. №	VX 8660.080
Материал	Нержавеющая сталь 1.4301 (AISI 304)
Поверхность	Шлифовка, зерно 400
Комплект поставки	Вкл. крепежный материал
Указание	Components from the 1st generation base/plinth system cannot be combined with components from the 2nd generation base/plinth system
Размер	Высота: 200 мм
Подходит для	Тип корпуса: VX VX SE TS PC Глубина: = 400 мм
Type rating согл. UL 50E	Type 1 Type 3R Type 4 Type 4X Type 12
Упаковка	2 шт.
Вес нетто	1.9

Функции

Gross weight	2.113
Код ТНВЭД	94039910
EAN	4028177037724
ETIM 9	EC000721
ETIM 8	EC000721
ECLASS 8.0	27182003

Одобрения

Одобрения	UL + C-UL - FTТА
-----------	------------------