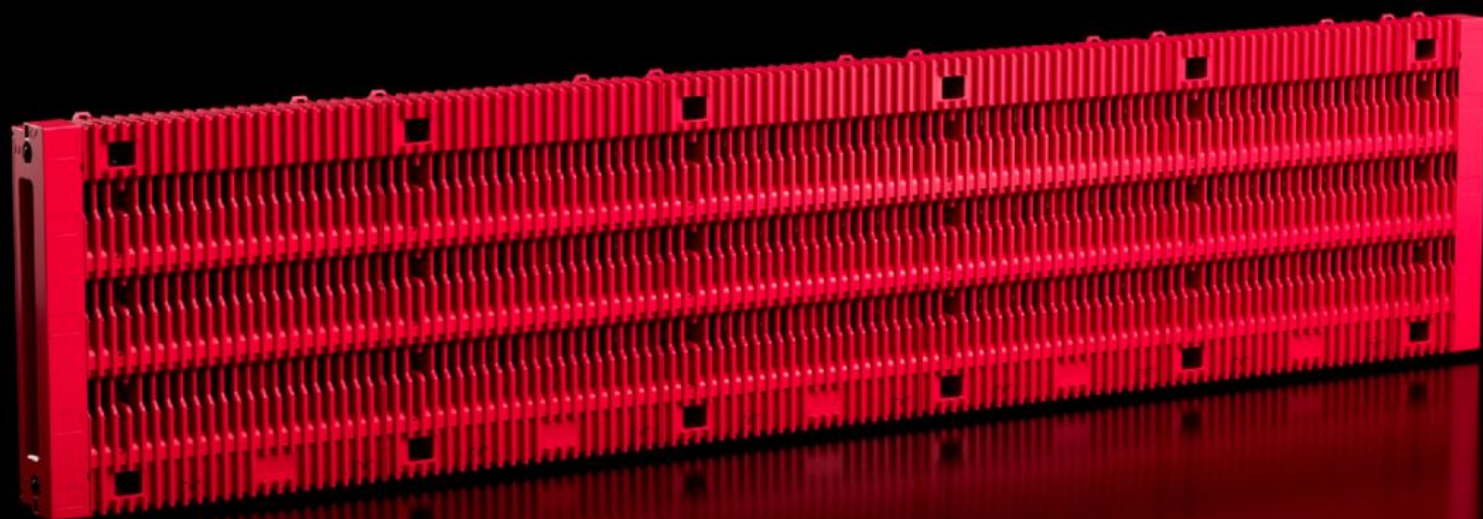
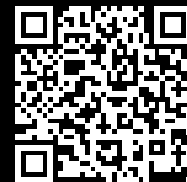


Rittal – The System.

Faster – better – everywhere.



RX 9360.028

RiLineX board

Состояние: 21.05.2026 (Источник: rittal.com/kz-ru)

ENCLOSURES

POWER DISTRIBUTION

CLIMATE CONTROL

IT INFRASTRUCTURE

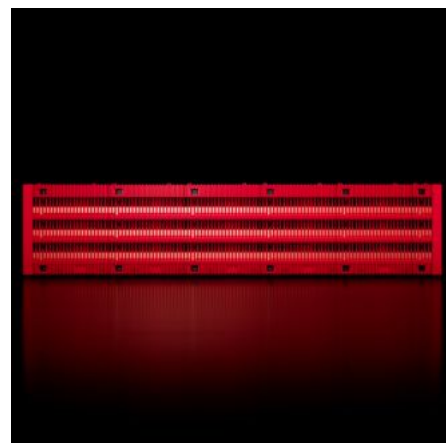
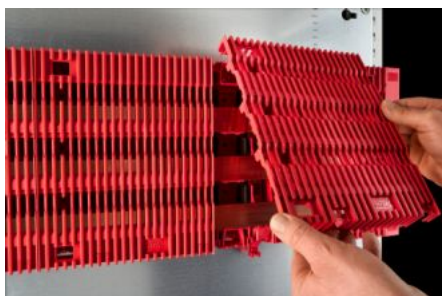
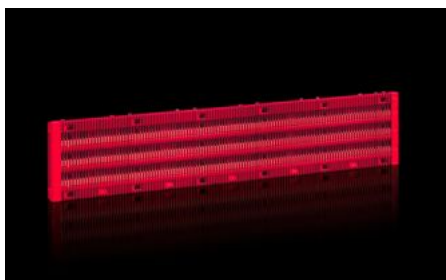
SOFTWARE & SERVICES

FRIEDHELM LOH GROUP



RX 9360.028 - RiLineX board

RiLineX complete board, 3-pole, 800 A including busbars 30x10 mm. Length 1105 mm for 1200 mm wide enclosures. End-to-end contact hazard protection up to IP 2XB, upgradable to IP 3X. Suitable for mounting horizontally, vertically and above head height. For voltages up to 1000 V AC and 1500 V DC. Tested short-circuit resistance up to 65 kA. Supports cable routing in the rear section. IEC and UL approved.



Функции

Арт. №	RX 9360.028
Преимущества	Time savings thanks to fully digital product data Reduced assembly time thanks to pre-assembled complete board Suitable for applications up to 1000 V AC and up to 1500 V DC Tested short-circuit resistance up to 65 kA Contact hazard protection up to IP 2XB, upgradable to IP 3X Tested and certified to IEC and UL Simple extension and baying
Материал	Полиамид (PA 6) Негорючесть согласно UL 94 E-Cu
Цвет	RAL 35745 RAL 9005
Комплект поставки	Вкл. встроенные шины
Степень защиты IP согл. МЭК 60 529	IP 2XB

Функции

Стандарты	МЭК 60 297-1/-2 UL 508
Номинальный ток макс.	800 A
Номинальный ток (UL)	800 A
Electrical ratings UL (SCCR)	65 kA - 600 V, RMS, unprotected 100 kA - 600 V, Fuse Class L max. 1600 A, JDDZ/7 100 kA - 600 V, circuit breaker max. 600 A, DIVQ/7 100 kA - 480 V, circuit breaker max. 800 A, DIVQ/7 65 kA - 600 V, circuit breaker max. 800 A, DIVQ/7
Расстояние между центрами шин	60 mm
Номинальное импульсное напряжение U_{imp}	12 кВ
Rated voltage	1 000 V AC 1 500 V DC 600 V AC (UL) 600 V DC (UL)
Номинальное напряжение изоляции U_i	1 000 V AC 1 500 V DC
Rated impulse withstand current	143 kA 143 kA (UL)
Rated short-term withstand current/t	65 kA/500 ms
Категория перенапряжения	4
Степень загрязнения	3
Busbar dimensions	30 мм x 10 мм
Количество полюсов	3-пол.
Fundamental frequency	50...60 Гц
Влажность воздуха (без конденсата)	10...90 %
Диапазон рабочих температур	-5 °C...55 °C
Диапазон температур хранения	-25 °C...75 °C

Функции

Размер	Ширина: 1.105 мм Высота: 246 мм Глубина: 49,2 мм
Упаковка	1 шт.
Вес нетто	14 kg
Gross weight	14,68 kg
Доля меди (кг / штук)	8,838
PCF per pack (cradle-to-gate)	92,84
Код ТНВЭД	85369010
ETIM 9	EC001900
Описание продукта	RiLineX complete board, 3-pole, 800 A including busbars 30 x 10 mm. Length 1105 mm for 1200 mm wide enclosures. Simple, fast baying of multiple boards using RiLineX baying connectors, without reducing short-circuit protection. Cables (such as control lines) may also be routed in the rear section of the board, for added flexibility with system assembly. Comprehensive digital product data means significant time savings with planning and documentation. The board is IEC 61439 and UL 508-approved and may be mounted horizontally, vertically and overhead. What's more, the system is easily extendible. It is suitable for AC applications up to 1000 V AC and DC applications up to 1500 V DC, offering a versatile solution for a wide range of application areas. The supply includes a preconfigured board and busbars.

Одобрения

Одобрения	UL + C-UL (listed)
Объяснения	Декларация о соответствии PCF-declaration