

Rittal – The System.

Faster – better – everywhere.



KX 1529.000

Terminal box KX, sheet steel, without gland plate

State: 2025.8.4 (Source: rittal.com/lt-en)

ENCLOSURES

POWER DISTRIBUTION

CLIMATE CONTROL

IT INFRASTRUCTURE

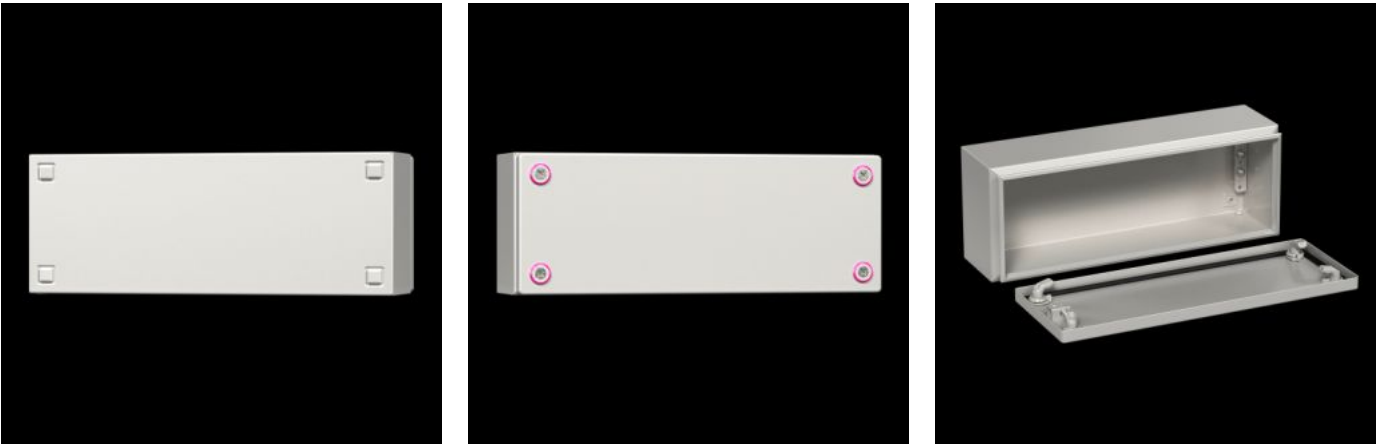
SOFTWARE & SERVICES

FRIEDHELM LOH GROUP



KX 1529.000 - Terminal box KX, sheet steel, without gland plate

The small enclosure KX, terminal box KX, without a gland plate allows for flexible interior installation while maintaining a high protection category.



Features

Model No.	KX 1529.000
Product description	The small enclosure KX, terminal box KX, without a gland plate allows for flexible interior installation while maintaining a high protection category.
Material	Enclosure: Sheet steel Cover: Sheet steel, all-round foamed-in PU seal
Surface finish	Enclosure and cover: Dipcoat primed, powder-coated on the outside, textured paint
Colour	RAL 7035
Supply includes	Enclosure with cover Mini cam lock
Protection category NEMA	NEMA 1 NEMA 3R NEMA 4 NEMA 12
Protection category to IEC 60 529	IP 66

Features

Type rating to UL 50E	Type 1 Type 3R Type 4 Type 12
IK Code	IK08
Dimensions	Width: 200 mm Height: 150 mm Depth: 120 mm
Material thickness - cover	1.25 mm
Material thickness - enclosure	1.25 mm
Basic material	Sheet steel
Packs of	1 pc(s).
Net weight	1.6
Gross weight	1.704
PCF per pack (cradle-to-gate)	9.4 kg CO2 eq (Cat B)
Note on PCF category	Category B: PCF value (cradle-to-gate) based on the product weight, approximately calculated and self-declared
Customs tariff number	84879090
EAN	4028177816350
E-Number Sweden	E3465201
ETIM 9	EC000261
ETIM 8	EC000261
ECLASS 8.0	27180101

Approvals

Approvals

Approvals	Bureau Veritas DNV-GL Lloyds Register of Shipping UL + C-UL (listed)
Certificates	Protection category
Explanations	Manufacturer's declaration Declaration of conformity Declaration of conformity UK PCF-declaration

Tender text

Enclosure (terminal box without gland plate)

Enclosure with cover:

Stable sheet steel design,
body folded from a single piece and welded,
with protection channel all-round cover opening,
rear panel with eyelets for wall mounting bracket,
cover with foamed-in PU seal,
with PE conductor connection in the enclosure
and via U-shaped bracket in the cover,
for quick and easy earthing,
with mini cam lock.

QR code:

QR code printed on body, cover and rating plate
for clear identification and easy retrieval of relevant
product information and documentation,
and for clear traceability of the individual parts.

Accessories: Cover hinge, cover retainer, mounting plate,
top hat rail, wall mounting bracket,
mounting claw for second mounting level.

Material:

Enclosure, cover: Sheet steel

Surface finish:

Triple surface treatment for optimum protection

against corrosion and resistance to mineral oils,
lubricants, machining emulsions and solvents:
Nanoceramic coating, electrophoretic dipcoat priming
Powder-coated on the outside in textured RAL 7035.
Protection category to IEC 60 529: IP 66
Protection category to UL 508A: Type 4
Dimensions (W x H x D): 200 x 150 x 120 mm