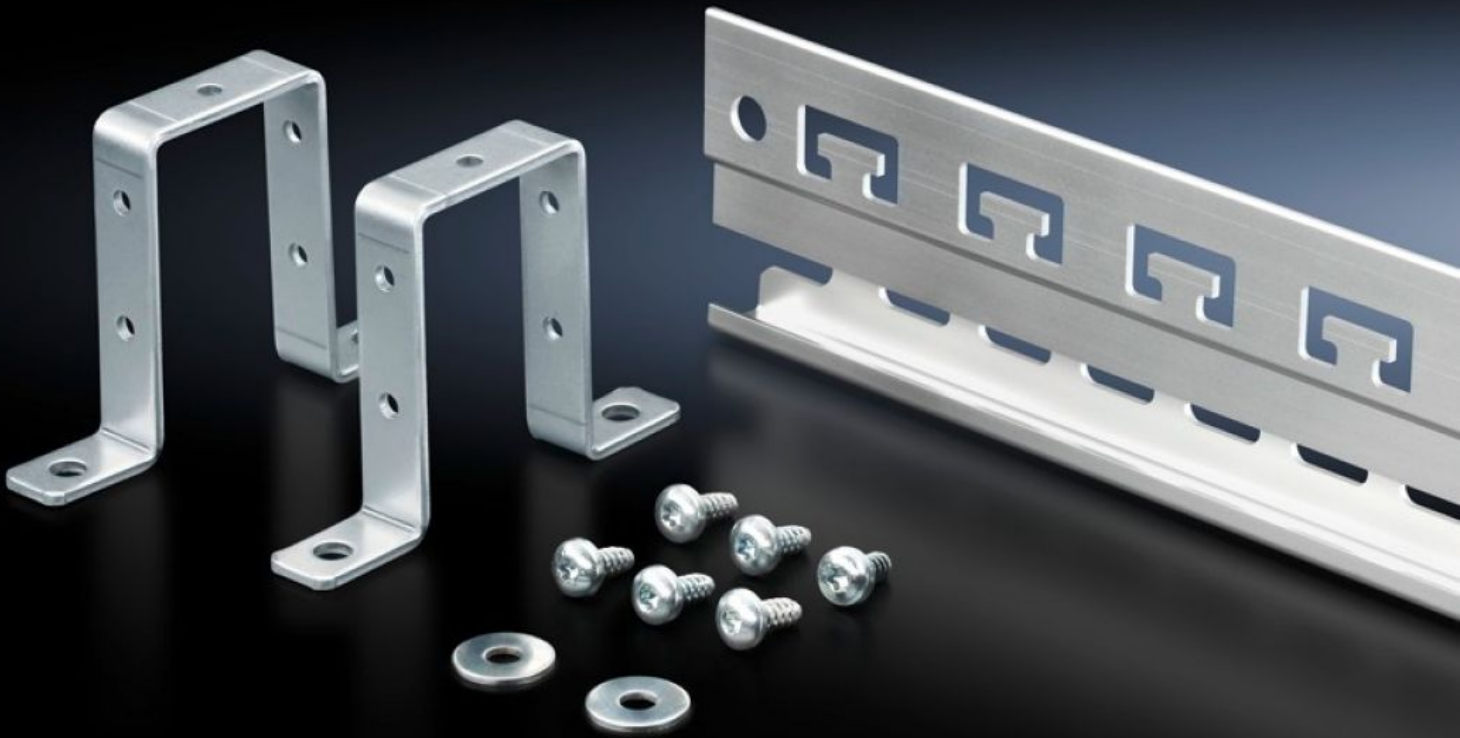


# Rittal – The System.

Faster – better – everywhere.



## SZ 2388.850

## Rail

State: 2026.4.8 (Source: [rittal.com/lt-en](http://rittal.com/lt-en))

ENCLOSURES

POWER DISTRIBUTION

CLIMATE CONTROL

IT INFRASTRUCTURE

SOFTWARE & SERVICES

FRIEDHELM LOH GROUP



# SZ 2388.850 - Rail for EMC shielding bracket and strain relief

Combined rail for strain relief and EMC contacting of inserted cables.



## Features

Model No.	SZ 2388.850
Design	C rail to accommodate cable clamps T-head cut-outs on a 40 mm pitch pattern for cable clamping using cable ties
Product description	Combined rail for strain relief and EMC contacting of inserted cables.
Benefits	Additional contacting on the left or right of the rail via existing holes (9 mm diameter) Prepared for tool-free mounting of EMC shielding brackets
Material	Extruded aluminium section
Surface finish	Chromium-free passivated
Supply includes	1 rail 2 retaining brackets Assembly parts
Length	753 mm
Installation options	on the horizontal/vertical enclosure section may also be fitted without a retaining bracket on a mounting plate
To fit	Enclosure type: VX TS Width: = 800 mm
Packs of	1 pc(s).

# Features

---

Net weight	0.63 kg
Gross weight	0.68 kg
Customs tariff number	76042990
ETIM 9	EC002625
ETIM 8	EC002625
ECLASS 8.0	27189234
Product description	SZ Rail, for EMC rail and stain relief, for W: 800 mm

---