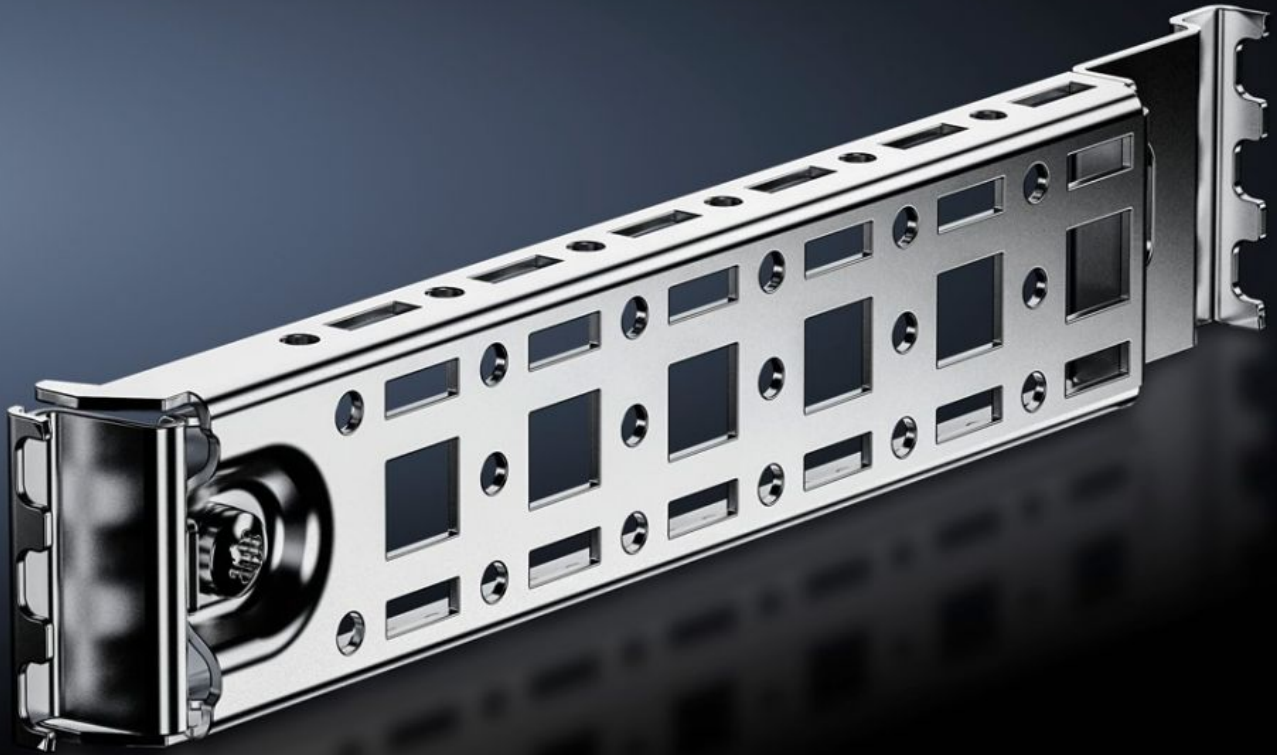


**Rittal – The System.**

Faster – better – everywhere.



**AX 2393.400**

**Rail for interior installation AX**

State: 2026.5.9 (Source: [rittal.com/lt-en](http://rittal.com/lt-en))

ENCLOSURES

POWER DISTRIBUTION

CLIMATE CONTROL

IT INFRASTRUCTURE

SOFTWARE & SERVICES

FRIEDHELM LOH GROUP



# AX 2393.400 - Rail for interior installation AX

For mounting in the enclosure, no machining required. Suitable for mounting on the side, base and roof up to a load of 25 N using the locators integrated into the enclosure.

## Features

Model No.	AX 2393.400
Product description	For mounting in the enclosure, no machining required. Suitable for mounting on the side, base and roof up to a load of 25 N using the locators integrated into the enclosure lights, door-operated switch, door stay, cable conduit holder enclosure. Variable with 2 rows of system punchings, creates additional mounting space e.g. for: Punched section with mounting flange 14 x 39 mm, enclosure lights, door-operated switch, door stay, cable conduit holder.
Benefits	Only one screw for attaching the rail inside the enclosure Including adaptor for door-operated switch Compatibility with VX25 accessories Enclosure protection category is retained (no machining required) Automatic potential equalisation May be retro-fitted even with the mounting plate in situ. Suitable for installation via gland plates
Material	Sheet steel
Surface finish	Zinc-plated
Assembly instruction	For installing LED system light, only in conjunction with mounting bracket for interior installation
To fit	Enclosure type: AX Depth: = 400 mm
Packs of	4 pc(s).
Net weight	0.996 kg
Gross weight	1.02 kg
Customs tariff number	73269098
ECLASS 8.0	27189234
Product description	AX Rail for interior installation, for D: 400 mm