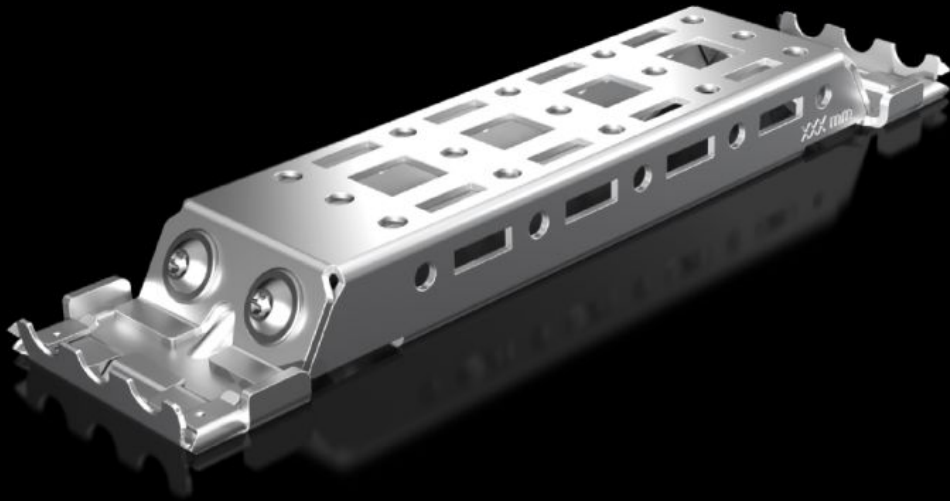


Rittal – The System.

Faster – better – everywhere.



AX 2394.210

Rail for interior installation AX

State: 2026.6.16 (Source: rittal.com/lt-en)

ENCLOSURES

POWER DISTRIBUTION

CLIMATE CONTROL

IT INFRASTRUCTURE

SOFTWARE & SERVICES

FRIEDHELM LOH GROUP



AX 2394.210 - Rail for interior installation AX

For mounting in the enclosure, no machining required. Suitable for mounting on the sides and roof. Creates additional mounting space e.g. for VX punched section with mounting flange 23 x 64 mm, VX punched section with mounting flange 14 x 39 mm, enclosure lights, door-operated switch, door stay, VX cable clamp rails and support rails.



Features

Model No.	AX 2394.210
Product description	For mounting in the enclosure, no machining required. Suitable mounting on the side, base and roof using the locators integrated into the enclosure. Variable with 2 rows of system punchings, creates additional mounting space e.g. for: Punched section with mounting flange 14 x 39 mm, enclosure lights, door-operated switch, door stay, cable conduit holder.
Benefits	Modular system for AX Compatibility with VX25 accessories Installation without drilling saves time Enclosure protection category is retained (no machining required) Automatic potential equalisation Enhanced load capacity and stability
Material	Sheet steel
Surface finish	Zinc-plated
Supply includes	Rail for interior installation AX Adaptor Assembly parts
Note	For installing the LED system light, either VX punched sections with mounting flanges 23 x 64 mm or mounting bracket for interior installation will be required.

Features

To fit	Enclosure type: AX Depth: = 210 mm
Packs of	4 pc(s).
Net weight	0.8 kg
Gross weight	0.9 kg
Customs tariff number	73269098
ETIM 9	EC002620
ETIM 8	EC002620
ECLASS 8.0	27189234
Product description	Rail for interior installation in AX compact enclosure, for depth: 210 mm