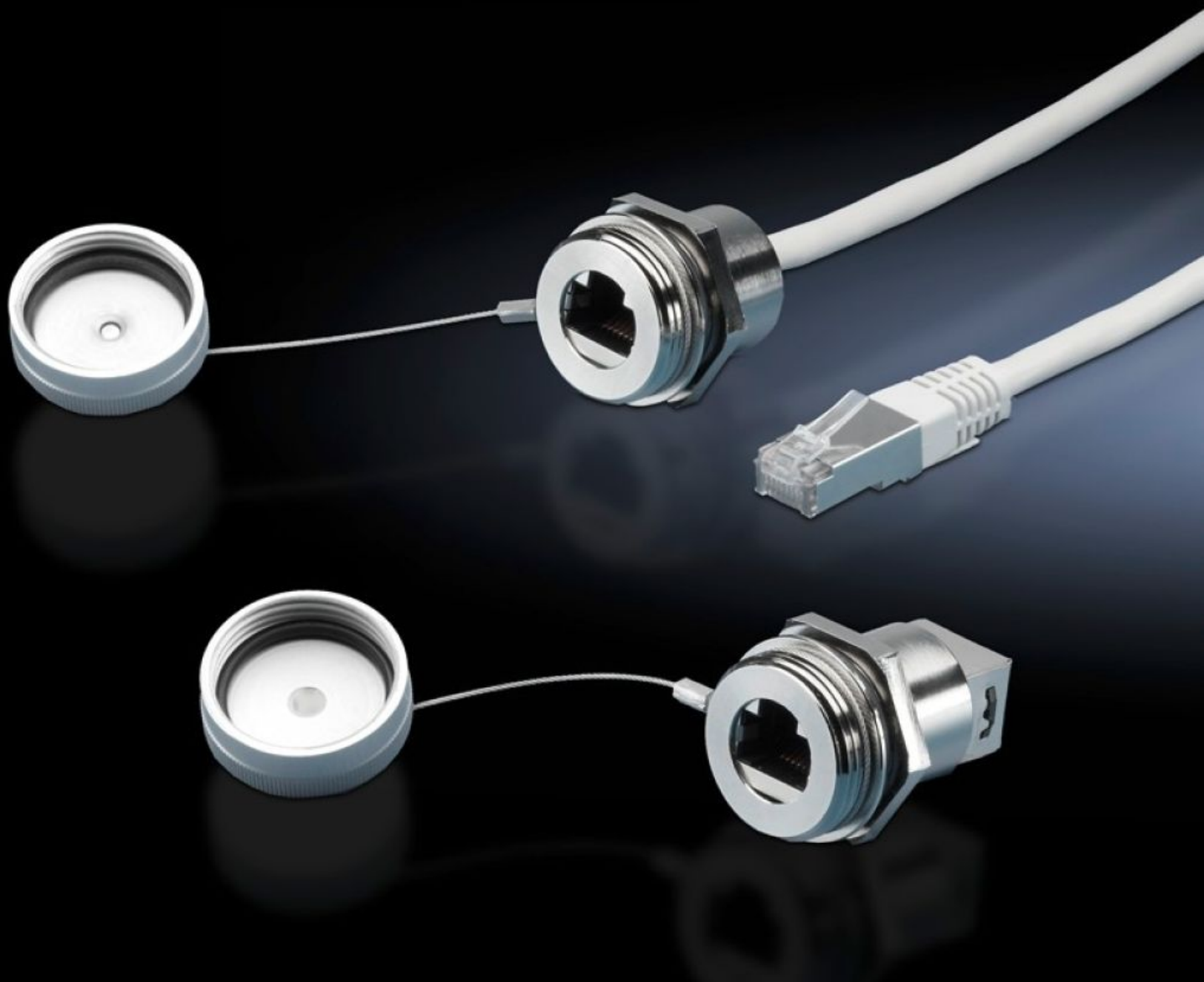


Rittal – The System.

Faster – better – everywhere.



SZ 2482.730

RJ45 installation module

State: 2025.8.29 (Source: [rittal.com/lt-en](https://www.rittal.com/lt-en))

ENCLOSURES

POWER DISTRIBUTION

CLIMATE CONTROL

IT INFRASTRUCTURE

SOFTWARE & SERVICES

FRIEDHELM LOH GROUP



SZ 2482.730 - RJ45 installation module

Installation module for interface extension with wall connection from socket to socket or from socket to connector.

Features

Model No.	SZ 2482.730
Design	RJ45 wall-mounted jack on internal jack
Product description	For extending the internal enclosure interfaces – e.g. from industrial PCs and switches – up to the outside of the enclosure. The wall connection only needs the same space as a switch.
Benefits	Rapid access for maintenance work The protection category of the enclosure is preserved The lock nut cuts automatically into the spray-finish, thereby creating a conductive connection Captive protective cap
Material	Enclosure: Brass Cover: Aluminium Seal: Polyamide
Surface finish	Enclosure: Nickel-plated Cover: Natural anodised
For wall thickness (max.)	1 - 6 mm
IP protection category to IEC 60529	IP67 with sealed protective cap
Packs of	1 pc(s).
Net weight	0.048
Gross weight	0.058
Customs tariff number	85369095
EAN	4028177550247
ETIM 9	EC001121
ETIM 8	EC001121

Features

ECLASS 8.0

27440390