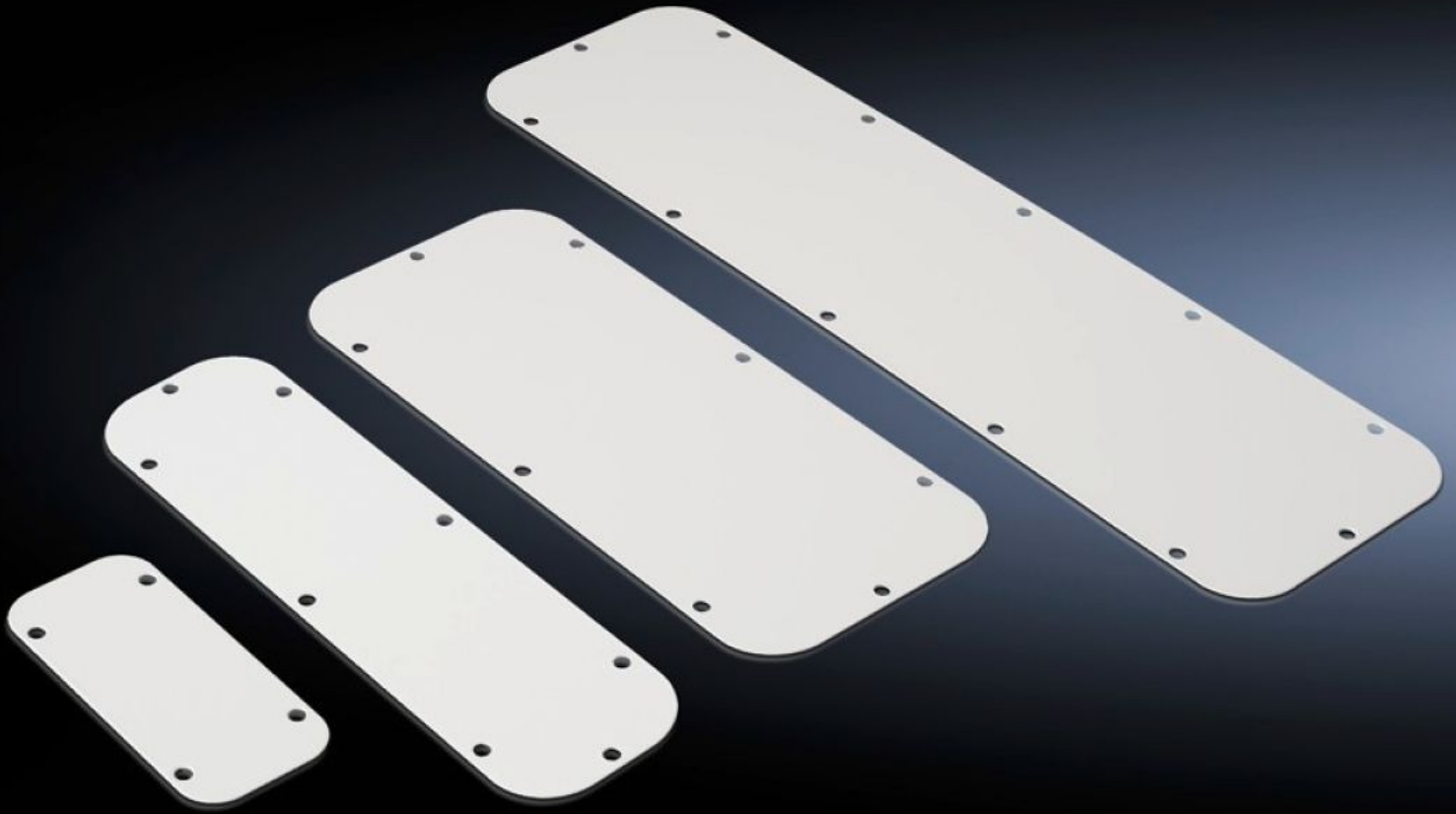


Rittal – The System.

Faster – better – everywhere.



SZ 2562.400 Metal gland plate

State: 2026.5.22 (Source: rittal.com/lt-en)

ENCLOSURES

POWER DISTRIBUTION

CLIMATE CONTROL

IT INFRASTRUCTURE

SOFTWARE & SERVICES

FRIEDHELM LOH GROUP



SZ 2562.400 - Metal gland plate

As spare/replacement part for the standard gland plates supplied loose, IP 66 when mounting in the usual position at the bottom.

Features

Model No.	SZ 2562.400
Design	solid
Product description	As spare/replacement part for the standard gland plates supplied loose.
Material	Sheet steel
Colour	RAL 7035
Note	The allocation of gland plate sizes is indicated on the relevant enclosures
Dimensions	Width: 339 mm Depth: 149 mm
To fit	Enclosure type: AE
Gland plate	Size: 4
Protection category to IEC 60 529	IP 66 when mounting in the usual position at the bottom
Packs of	1 pc(s).
Net weight	0.5 kg
Gross weight	0.588 kg
Customs tariff number	73079100
ETIM 9	EC000211
ETIM 8	EC000211
ECLASS 8.0	27142421
Product description	SZ Metal gland plate, closed, WD: 339x149 mm, size: 4